



# COVID-19 Situational Report No. 416-422

## WEEKLY REPORT

Ministry of Health

Date of report: August 21, 2022

Email: [surveillance@health.gov.ws](mailto:surveillance@health.gov.ws)

Distribution: Health Emergency Operations Centre (HEOC)

Prepared by: National Health Surveillance & IHR Division

Tel: 66506/66507

New information in BLUE

### Key Dates:

- Date Wuhan, China Declared Outbreak: 31/12/2019
- Date of Border Control activities commenced: 22/01/2020 (Travel Advisory and Health screening for incoming passengers)
- Date COVID-19 declared PHEIC: 31/01/2020
- Date Global Pandemic for COVID-19 Declared: 12/03/2020
- Samoa Declares State of Emergency for COVID-19: 21/03/2020
- Date of first repatriation flight: 24/03/2020
- COVID-19 PCR Testing Cartridges Received in Country: 08/05/2020 (controls received 15/05/2020)
- Date of First Coronavirus PCR Test Processed Within Country: 19/05/2020
- Date of first COVID19 historical case: 18/11/2020
- Date of last repatriation flight 2020: 08/12/2020
- Date of first repatriation flight 2021: 22/01/2021
- Date of first COVID-19 case in Samoa: 13/02/2021
- Date first batch of AstraZeneca (AZ) vaccine from COVAX arrived: 09/04/2021
- Date of first dose administration of AstraZeneca: 18/04/2021
- Date of second dose administration of AZ vaccine: 14/06/2021
- Date of 2-day lockdown for COVID-19 vaccination: 23/09/21 – 24/09/2021
- Date of first batch of Pfizer vaccine from New Zealand arrived: 21/10/2021
- Date of first dose administration of Pfizer: 22/10/2021
- Date of Pfizer vaccination roll out in schools for 12-17yrs: 25/10/2021
- Date of 1-day national vaccination drive: 19/11/2021
- National Lockdown commenced: 6pm 22/01/22 - 6pm 28/01/22
- Alert Level 2 commenced: 6pm 28/01/22 – 6pm 11/02/22
- Alert Level 1 commenced: 6pm 11/02/22 – 12am 19/03/22
- Date of school vaccination roll out for 5-11yrs: 05/03/22
- Alert Level 3 lockdown commenced: 12am 19/03/22 - 6am 06/04/22
- Alert Level 2 commenced: 6am 06/04/2022 – 12am 01/06/2022
- Alert Level 1 commenced: 12am 01/06/2022
- Date of last repatriation flight: 30/06/2022 (Flight origin – New Zealand)
- Date of most recent commercial flight: 20/08/2022 (Flight origin – New Zealand)

## SECTION A. SAMOA SITUATION

### I. Surveillance update

Reporting period: **August 14 at 2pm – August 21 at 2pm, 2022**

SAMOA COVID-19 SITUATION	Number of cases
Total of new COVID-19 positive cases over the last 7 days (both PCR and rapid antigen test - RAT from all sites*)	64
Cumulative number of COVID-19 positive cases since community transmission detected in March 17, 2022	15,598
<b>Border Surveillance</b> Cumulative number of COVID-19 positive cases detected at the Port of Entry (POE) since November 2020 International POE: <ol style="list-style-type: none"> <li>1. Faleolo International Airport               <ul style="list-style-type: none"> <li>• NZ990 16<sup>th</sup> August – 3 new cases</li> </ul> </li> <li>2. Matautu Wharf               <ul style="list-style-type: none"> <li>• No cases detected</li> </ul> </li> </ol>	169
Cumulative number of COVID-19 positive cases (border and community cases)	15,767
<b>COVID-19 admissions</b> Total number of COVID-19 positive cases admitted to TTM Hospital since community transmission in	

March 17, 2022 – 324 admissions Total number of cases discharged from TTM hospital – 287 discharged home <u>Currently in the last 24hrs:</u> <ul style="list-style-type: none"> <li>• 8 hospital admissions</li> <li>– No ICU patient</li> </ul>	
<b>Total of new COVID-19 related deaths in the last 7 days</b>	<b>0</b>
<b>Cumulative number of COVID-19 related deaths since community transmission detected in March 17, 2022**</b>	<b>29</b>
<b>Rapid antigen testing (RAT)</b> Cumulative number of RATs conducted (as of 16/08/22 at 02:00pm)***	<b>187,397</b>

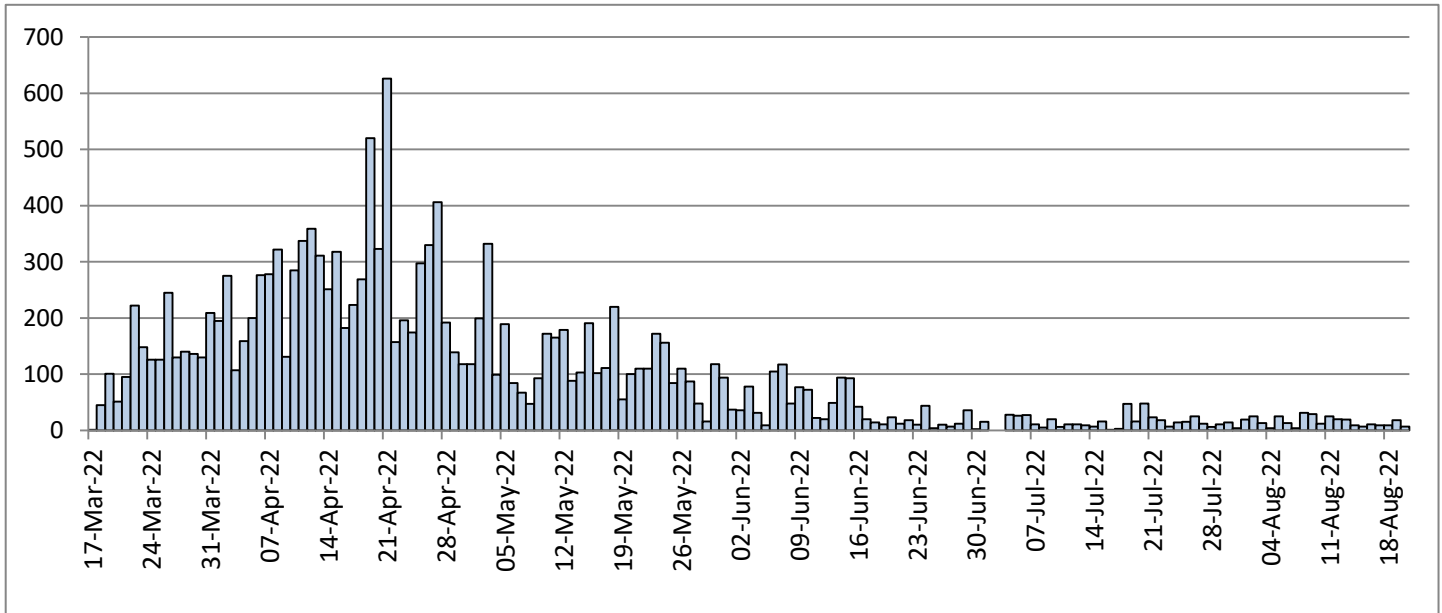
\* The sites include all health facilities, private clinics, testing sites and self-reporting

\*\*The death count is subject to change following full verification of all reported COVID-19 deaths from all health facilities.

Note: There are other deaths among registered cases that are not primarily caused by COVID-19.

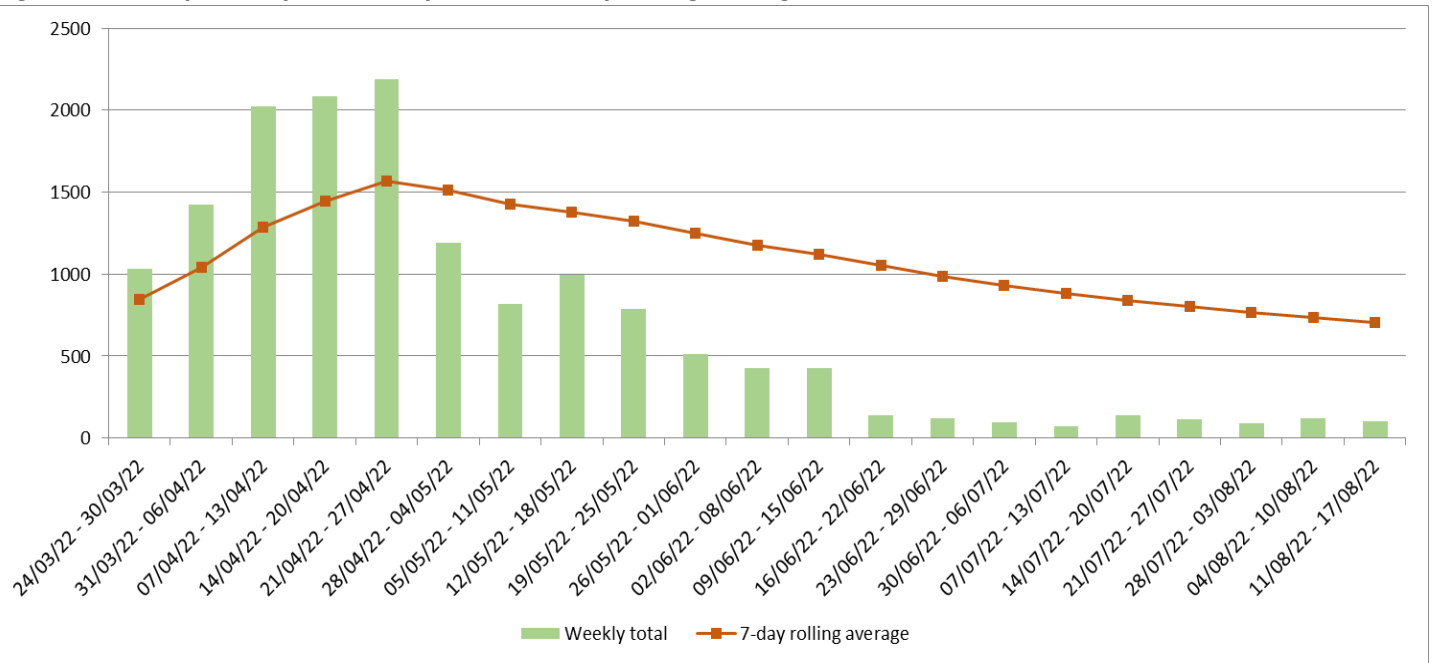
\*\*\*The test count is subject to change to data cleaning and when data becomes available

**Figure 1. COVID-19 epicurve – New daily confirmed community cases by date of notification**

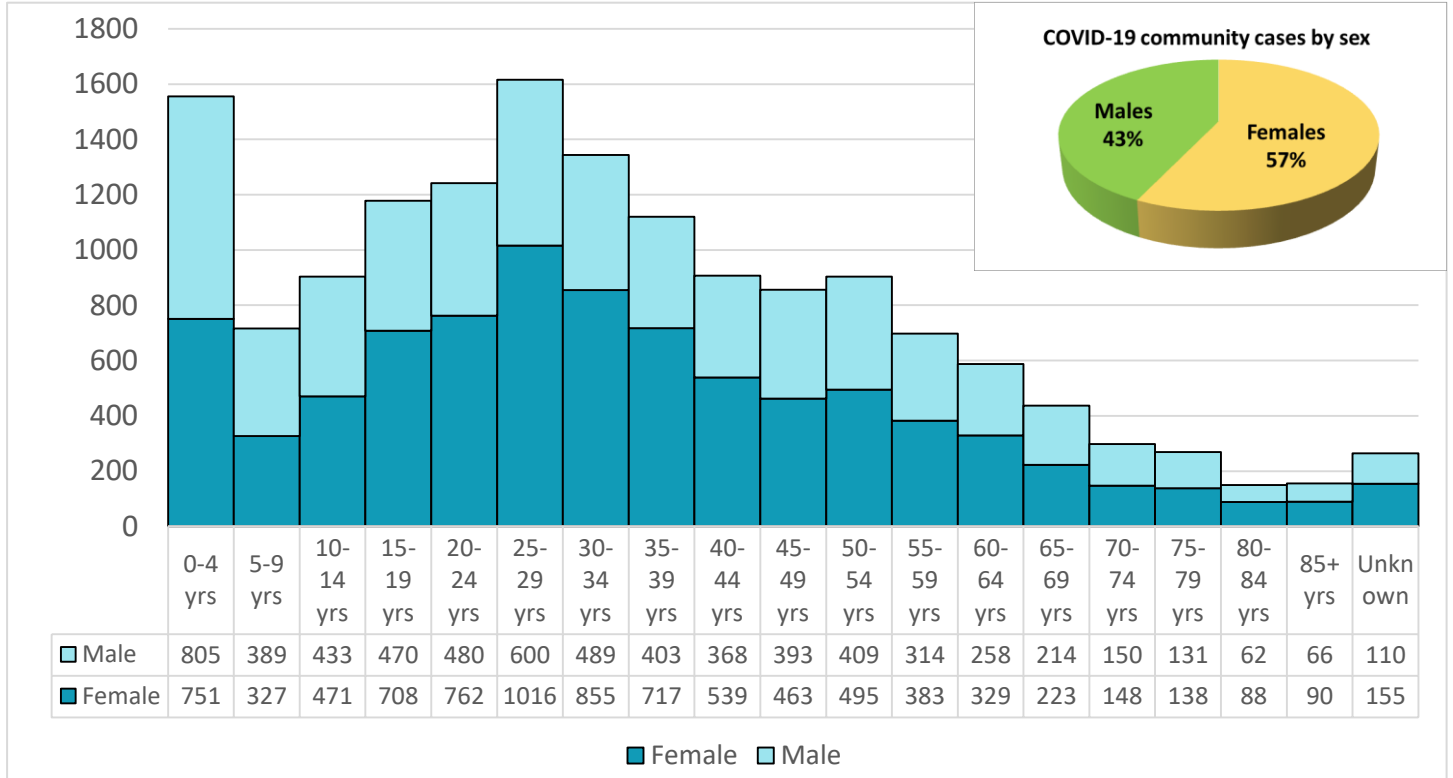


**Note:** The cut off for daily reporting is 2pm, therefore numbers reporting after 2pm will be reflected in the next reporting periods' count.

**Figure 2. Weekly total of community cases vs 7-day rolling average**



**Figure 3. Cumulative community cases since community transmission on March 17, 2022 by age group and sex**



**Note:** Of the total reported community cases, 10.0% are children between 0-4 years and about 1.5% were reported to have been admitted.

**Table 1. Cumulative community cases since March 17<sup>th</sup> by Island of Current Residence**

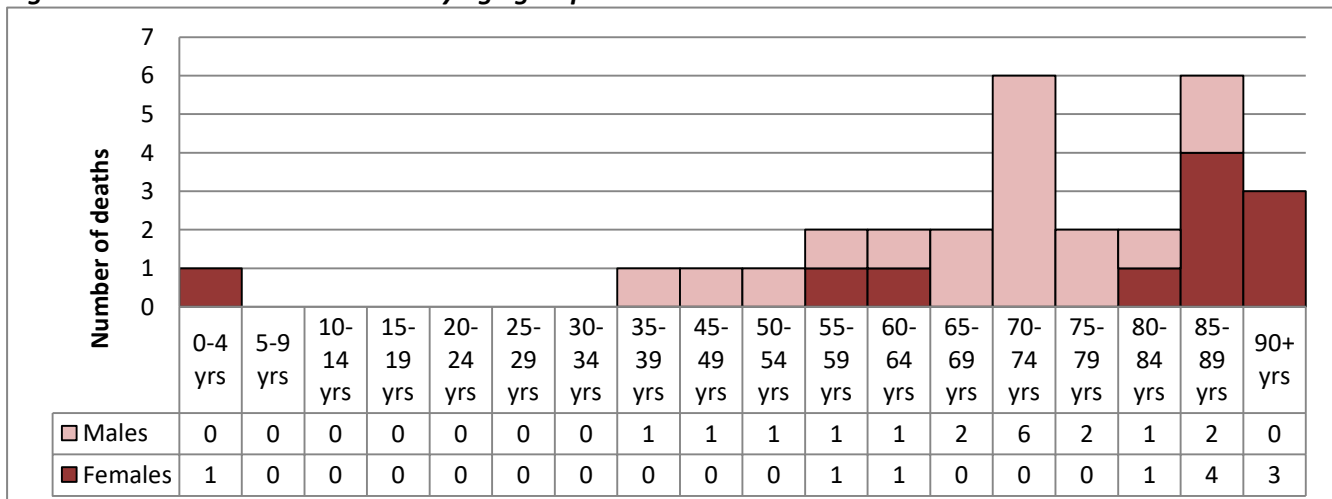
Island	Number of cases	% of cases
Upolu	12,690	81.4%
Savaii	2,890	18.5%
Manono Tai	18	0.1%
<b>TOTAL</b>	<b>15,598</b>	<b>100.0%</b>

Sources of notification of COVID-19 community cases are summarized in Annex A. COVID-19 community cases by districts are summarized in Annex B.

### COVID-19 MORTALITY ANALYSIS

Cumulative number of COVID-19 related deaths	<b>29 deaths</b>
Age range	<b>1 yr – 94 yrs</b>
Average age	<b>71 yrs</b>

**Figure 4. COVID-19 related deaths by age group and sex**



## II. COVID-19 vaccination update

As of **08:00am Local Time August 21, 2022**

- AEFI for COVID-19 vaccines continue to be monitored without any major reactions to report.
- First round of booster doses administered to date is **77,988**.
- Second round of booster doses administered to date is **654**.

**Table 2. Samoa's COVID-19 vaccination status**

Age group	Target Population	FIRST DOSE		SECOND DOSE	
		Number	%	Number	%
<b>18yrs +</b>	<b>121,891</b>	<b>122,269</b>	<b>&gt;99%</b>	<b>114,218</b>	<b>94%</b>
<b>12 – 17 yrs</b>	<b>27,880</b>	<b>28,402</b>	<b>&gt;99%</b>	<b>25,831</b>	<b>93%</b>
<b>5 – 11 yrs*</b>	<b>40,638</b>	<b>40,346</b>	<b>99%</b>	<b>37,298</b>	<b>92%</b>

\*The 5-11 year old vaccination roll out commenced on March 05, 2022. The administration of the second dose started on April 04, 2022.

**Table 3. Details of donation and supply of COVID-19 vaccines**

Date Received	Vaccine Type	Vials	Doses	Supplier/Donated by
9-Apr-21	AstraZeneca	2,400	24,000	COVAX
14-May-21	AstraZeneca	2,880	28,800	COVAX
9-Jul-21	AstraZeneca	1,000	10,000	DFAT AUS
15-Jul-21	AstraZeneca	1,000	10,000	DFAT AUS
26-Jul-21	AstraZeneca	3,000	30,000	DFAT AUS
5-Aug-21	AstraZeneca	2,640	26,400	COVAX
19-Aug-21	AstraZeneca	11,200	112,000	Japan via COVAX
21-Oct-21	Pfizer	3515	17,575	New Zealand
28-Oct-21	Pfizer	1,670	8,350	New Zealand
28-Oct-21	AstraZeneca	2,400	24,000	New Zealand via COVAX
6-Nov-21	Pfizer	1,455	7,275	New Zealand
20-Nov-21	Pfizer	1,670	10,020	New Zealand
27-Nov-21	Pfizer	1,000	6,000	New Zealand
18-Dec-21*	AstraZeneca	270	2,700	DFAT AUS
08-Jan-22	Pfizer	585	3,510	New Zealand
19-Jan-22	AstraZeneca	200	2,000	DFAT AUS
01-Feb-22	AstraZeneca	1,000	10,000	DFAT AUS
05-Feb-22	Pfizer	750	4,500	New Zealand
12-Feb-22	Pfizer	830	5,000	New Zealand
19-Feb-22	Pfizer	420	2,520	New Zealand
26-Feb-22	Pfizer	386	2,320	New Zealand
06-Mar-22	Paediatric Pfizer	3,000	30,000	New Zealand
19-Mar-22	Paediatric Pfizer	1,000	10,000	New Zealand
22-Mar-22	Adult Pfizer	1,620	9,720	New Zealand
30-Mar-22	Adult Pfizer	11,700	70,200	DFAT Australia
09-Apr-22	Paediatric Pfizer	3,000	30,000	New Zealand
24-Apr-22	Adult Pfizer	6,825	40,950	DFAT AUS
01-May-22	Paediatric Pfizer	1,000	10,000	New Zealand
01-May-22	Adult Pfizer	7,605	45,630	US donation via COVAX
06-Jul-22	Paediatric Pfizer	3,000	30,000	New Zealand
<b>Total</b>		<b>79,006</b>	<b>623,380</b>	

\*This batch was discarded due to breach of cold chain; exceeded 8°C for more than 24hrs prior to arrival into Samoa

## III. Laboratory Update

As of **08:00am Local Time August 21, 2022**

- Total of **2,381 PCR GeneXpert cartridges** for COVID-19 testing were in stock for processing within country.
- COVID tests processed in country is summarized in the tables below.

**Table 4. Classification of COVID-19 tests requested**

Samples requested for	2020	2021	2022								TOTAL
			Jan	Feb	Mar	Apr	May	Jun	Jul	Aug	
Persons under investigation	52	35	6	3	230	1,250	793	872	450	151	3,842
Immigration	43	3,317	259	77	199	123	636	337	147	81	5,219
Isolation ward	-	-	51	133	105	1,524	1,534	2,282	39	62	33,406
Quarantined Passengers/staff	5,442	14,794	704	1360	1,804						
RAT confirmation	-	-	-	-	61						
Frontline workers	0	462	1,139	987	923						
<b>Total</b>	<b>5,537</b>	<b>18,608</b>	<b>2,159</b>	<b>2,560</b>	<b>3,322</b>	<b>2,897</b>	<b>2,963</b>	<b>3,491</b>	<b>636</b>	<b>294</b>	<b>42,467</b>

Source: Clinical Laboratory, TTM Hospital, MOH

\*All people travelling overseas are assessed by the public health doctors for medical clearance and tested for COVID-19 (if required) prior to their travel.

## IV. Commercial flights update

As of **02:00pm Local Time August 21, 2022**

1. A commercial flight NZ990 from New Zealand arrived on August 20, 2022 with 174 passengers.
2. A commercial flight NZ990 from New Zealand arrived on August 18, 2022 with 287 passengers.
3. A commercial flight FJ255 from Fiji arrived on August 17, 2022 with 172 passengers.
  - Of the self-reports on Day 3 (August 20, 2022), 97 reported negative and 75 did not report.
4. A commercial flight QF333 from Australia arrived on August 16, 2022 with 272 passengers.
  - Of the self-reports on Day 3 (August 19, 2022), 185 reported negative and 87 did not report.
5. A commercial flight NZ990 from New Zealand arrived on August 16, 2022 with 173 passengers.
  - Of the self-reports on Day 3 (August 19, 2022), 3 reported positive, 93 were negative and 77 did not report.
6. A commercial flight FJ255 from Fiji arrived on August 15, 2022 with 159 passengers.
  - Of the self-reports on Day 3 (August 18, 2022), 88 reported negative and 71 did not report.
7. A commercial flight FJ255 from Fiji arrived on August 14, 2022 with 162 passengers.
  - Of the self-reports on Day 3 (August 17, 2022), 129 reported negative and 33 did not report.
8. A commercial flight NZ990 from New Zealand arrived on August 14, 2022 with 179 passengers.
  - Of the self-reports on Day 3 (August 17, 2022), 123 reported negative and 56 did not report.
9. A commercial flight NZ990 from New Zealand arrived on August 13, 2022 with 176 passengers.
  - Of the self-reports on Day 3 (August 16, 2022), 116 reported negative and 60 did not report.

## 10. Port health update

Reporting period: **August 14 - 20, 2022**

Port Health clearance summary on the following vessels at the Matautu Wharf and aircrafts at Faleolo International Airport in this reporting period:

- **Vessels**
  - 4 yachts
  - 3 container vessels
  - 2 fishing vessels
  - 2 cargo/passenger vessels
  - 2 chartered vessels
- **International flights**
  - 53 passenger flights
  - 4 air forces

- 1 gas tanker
- 1 oil tanker

**Table 5. Matautu Wharf health clearance**

Date	Vessel name	ETA	Vessel type	Crew	PAX	Last port	Remarks
13-Aug-22	LTC Kalopaga	1130hrs	Cargo/Passenger	12	8	Tokelau	Health Clearance Granted
14-Aug-22	VUKOVAR	0700hrs	Oil Tanker	22	0	Pago Pago	Health Clearance Granted
15-Aug-22	Fu'a 2	2010hrs	Chartered	3	0	Pago Pago	Health Clearance Granted
15-Aug-22	Siren Marine Patrol Vessel	2030hrs	Chartered	5	7	Pago Pago	Health Clearance Granted
16-Aug-22	Mount Cameron	0737hrs	Container	25	0	Papeete	Health Clearance Granted
16-Aug-22	Hai Xing 817	1017hrs	Fishing	18	0	Pohnpei, FSM	Health Clearance Granted
16-Aug-22	Yuh Chang 1	1018hrs	Fishing	13	0	Fishing Ground	Health Clearance Granted
17-Aug-22	Loly	0700hrs	Yacht	2	0	French Polynesia	Health Clearance Granted
17-Aug-22	SV Ten Gauge	0800hrs	Yacht	2	0	Honolulu	Health Clearance Granted
17-Aug-22	Kiko	0900hrs	Yacht	3	0	Honolulu	Health Clearance Granted
18-Aug-22	Liloa II	0700hrs	Container	13	0	Pagopago	Health Clearance Granted
20-Aug-22	MV Lady Naomi	0700hrs	Cargo/Passenger	18	51	Pago Pago	Health Clearance Granted
20-Aug-22	Capitaine Kupe	0700hrs	Container	16	0	Nukualofa, Tonga	Health Clearance Granted
20-Aug-22	Epic St Agnes	0700hrs	Gas Tanker	16	0	Labasa, Fiji	Health Clearance Granted
20-Aug-22	HOLD FAST	1600hrs	Yacht	2	0	Pago Pago	Health Clearance Granted

**All 15 vessels complied with Samoa's entry requirements**

**Table 6. Faleolo International Airport**

Date	Aircraft reg.	Flight #	Flight type	ETA	POE	PAX	Crew	Returned pax	REMARKS
14-Aug-22	5W-FAY	OL219	Commercial	1320hrs	PPG	13	2	0	Health Clearance Granted
14-Aug-22	ZKNNF	NZ0990	Commercial	1400hrs	AKL	179	8	0	Health Clearance Granted
14-Aug-22	5W-LOR	5W-LOR	Commercial	1515hrs	NAN	1	1	0	Health Clearance Granted
14-Aug-22	5W-FAY	OL221	Commercial	1540hrs	PPG	2	13	0	Health Clearance Granted
14-Aug-22	DQFAB	FJ255	Commercial	1615hrs	NAN	162	8	0	Health Clearance Granted 4 RATS on arrival
14-Aug-22	5W-LOR	TA518	Commercial	1739hrs	PPG	8	1	0	Health Clearance Granted
14-Aug-22	5W-FAY	OL223	Commercial	1823hrs	PPG	5	2	0	Health Clearance Granted
15-Aug-22	5W-LOR	TA502	Commercial	1007hrs	PPG	7	1	0	Health Clearance Granted
15-Aug-22	5W-FAW	OL219	Commercial	1100hrs	PPG	10	2	0	Health Clearance Granted
15-Aug-22	5W-LOR	TA508	Commercial	1146hrs	PPG	7	1	0	Health Clearance Granted
15-Aug-22	5W-FAW	OL221	Commercial	1342hrs	PPG	13	2	0	Health Clearance Granted
15-Aug-22	5W-LOR	TA512	Commercial	1456hrs	PPG	8	1	0	Health Clearance Granted
15-Aug-22	DQFAF	FJ255	Commercial	1605hrs	PPG	159	7	0	Health Clearance Granted 8 RATS on arrival/ 4 PCR
15-Aug-22	5WFAW	OL223	Commercial	1630hrs	PPG	11	2	0	Health Clearance Granted
15-Aug-22	5WLOR	TA518	Commercial	1647hrs	PPG	7	1	0	Health Clearance Granted
16-Aug-22	5WLOR	TA502	Commercial	1014hrs	PPG	4	1	0	Health Clearance Granted
16-Aug-22	5WFAY	OL219	Commercial	1203hrs	PPG	13	2	0	Health Clearance Granted
16-Aug-22	5WLOR	TA508	Commercial	1252hrs	PPG	8	1	0	Health Clearance Granted
16-Aug-22	ZKNNF	NZ0990	Commercial	1410hrs	AKL	173	8	0	Health Clearance Granted
16-Aug-22	5W-LOR	TA512	Commercial	1448hrs	PPG	8	1	0	Health Clearance Granted
16-Aug-22	5W-FAY	OL221	Commercial	1500hrs	PPG	13	2	0	Health Clearance Granted 1RAT & 1PCR
16-Aug-22	5W-FAW	OL891	Commercial	1557hrs	PPG	3	2	0	Health Clearance Granted
16-Aug-22	5W-LOR	TA518	Commercial	1642hrs	PPG	5	1	0	Health Clearance Granted
16-Aug-22	Royal NZ Airforce	NSO 952	Air force	1700hrs	PPG	0	18	0	Health Clearance Granted Assist with MAF Patrol
16-Aug-22	VHQPA	QF333	Commercial	1715hrs	BNE	272	14	0	Health Clearance Granted 3 PCR (non-complied pax),



									5 RAT expired covid test
16-Aug-22	5W-FAY	OL223	Commercial	1800hrs	PPG	9	2	0	Health Clearance Granted
17-Aug-22	5W-FAY	OL221	Commercial	1310hrs	PPG	14	2	0	Health Clearance Granted
17-Aug-22	Royal Australian Air Force	ASY676	Air force	1345hrs	NAN	0	10	0	Health Clearance Granted Cargo Flight
17-Aug-22	DQFAH	FJ255	Commercial	1610hrs	NAN	172	6	4*	Health Clearance Granted RAT 21, 4 Returned pax
17-Aug-22	5W-FAW	OL219	Commercial	1636hrs	PPG	8	2	0	Health Clearance Granted
18-Aug-22	5W-LOR	TA502	Commercial	1111hrs	PPG	7	1	0	Health Clearance Granted
18-Aug-22	5W-FAW	OL219	Commercial	1205hrs	PPG	13	2	0	Health Clearance Granted
18-Aug-22	5W-LOR	TA508	Commercial	1206hrs	PPG	8	1	0	Health Clearance Granted
18-Aug-22	ZKNZD	NZ0990	Commercial	1400hrs	AKL	287	13	0	Health Clearance Granted
18-Aug-22	5W-FAW	OL221	Commercial	1452hrs	PPG	10	2	0	Health Clearance Granted
18-Aug-22	5W-LOR	TA512	Commercial	1508hrs	PPG	7	1	0	Health Clearance Granted
18-Aug-22	5W-LOR	TA518	Commercial	1717hrs	PPG	9	1	0	Health Clearance Granted
18-Aug-22	5W-FAW	OL223	Commercial	1740hrs	PPG	10	2	0	Health Clearance Granted
18-Aug-22	5W-LOR	TA522	Commercial	1852hrs	PPG	0	1	0	Health Clearance Granted
19-Aug-22	5W-LOR	TA502	Commercial	0945hrs	PPG	4	1	0	Health Clearance Granted
19-Aug-22	5W-LOR	TA508	Commercial	1145hrs	PPG	4	1	0	Health Clearance Granted
19-Aug-22	5W-FAY	OL221	Commercial	1256hrs	PPG	12	2	0	Health Clearance Granted
19-Aug-22	5W-LOR	TA512	Commercial	1445hrs	PPG	7	1	0	Health Clearance Granted
19-Aug-22	Royal Australian Air Force	ASY261	Air force	1525hrs	RAAF BASE Amberley-BNE	0	15	0	Health Clearance Granted Tech Stop
19-Aug-22	5W-FAW	OL219	Commercial Flight	1445hrs	PPG	12	2	0	Health Clearance Granted
19-Aug-22	5W-LOR	TA518	Commercial Flight	1643hrs	PPG	7	1	0	Health Clearance Granted
19-Aug-22	Royal Australian Air Force	ASY262	Air force	1700hrs	RAAF BASE Amberley-BNE	0	16	0	Health Clearance Granted Tech Stop
19-Aug-22	5W-FAY	OL223	Commercial	1730hrs	PPG	3	2	0	Health Clearance Granted
20-Aug-22	5W-LOR	TA502	Commercial	0940hrs	PPG	7	1	0	Health Clearance Granted
20-Aug-22	5W-LOR	TA508	Commercial	1136hrs	PPG	8	1	0	Health Clearance Granted
20-Aug-22	5W-FAY	OL219	Commercial	1205hrs	PPG	10	2	0	Health Clearance Granted
20-Aug-22	5W-FAY	OL221	Commercial	1423hrs	PPG	13	2	0	Health Clearance Granted
20-Aug-22	5W-LOR	TA512	Commercial	1431hrs	PPG	4	1	0	Health Clearance Granted
20-Aug-22	5W-LOR	TA518	Commercial	1639hrs	PPG	6	1	0	Health Clearance Granted
20-Aug-22	5W-FAW	OL225	Commercial	1726hrs	PPG	0	2	0	Health Clearance Granted
20-Aug-22	5W-FAY	OL223	Commercial	1528hrs	PPG	10	2	0	Health Clearance Granted
20-Aug-22	ZKNNA	NZ0990	Commercial	2050hrs	AKL	174	7	0	Health Clearance Granted 3 pax conducted PCR & RAT

**All 57 flights complied with Samoa's entry requirements**

Some passengers were swabbed on arrival either PCR or RAT due to the following reasons:

1. Symptomatic passengers identified during the health screening and public health observations
2. Passengers that lost the hard copy of their covid test/vaccination card but they have the electronic copy on their phones
3. Passengers who have exceeded hours of their covid test due to flight delays
4. Passengers who travel from high risk areas, and those with multiple transits

All passengers tested upon arrival have returned negative results for COVID-19.

**\*One (1) passenger was denied entry due to failure in providing a negative COVID-19 test result. However, the case is a toddler and according to Airline Regulations, a toddler cannot travel alone. This resulted in the whole family of four (4) returning to their last port of entry.**

## 5. Risk communication and community engagement update

- Continue to Disseminate all health information on preventive measures of COVID-19 through Vaccination Sites and media outlets
- Most Calls received at the MOH Call Centre since the 14th April, 2022 were public inquiries on vaccination sites and operations.
- Several issues raised through the media monitoring reports have been addressed by way of public notices, statements and reminders to the public to utilize government websites and Facebook to manage COVID-19 'infodemic' and misinformation.



## ANNEX A. COVID-19 community cases by source of notification

Source of notification	Community Cases Notified in the last 7 days (August 15-21, 2022)	Cumulative Community Cases Notified
<b>Private Health Providers</b>		
Enosa Clinic	2	178
Others	0	760
<b>Health Facilities</b>		
TTMH	45	5311
Others	0	5258
<b>HEOC Surveillance and Case Finding</b>		
Case investigations & Contact Tracing (NHSIHR MOH)	1	945
Self report online	7	1002
Call Centre	6	592
Others	0	520
<b>Workplaces</b>		
Others	0	1032
<b>Total notified</b>	<b>61</b>	<b>15,598</b>

## ANNEX B. COVID-19 community cases by district

Weekly COVID-19 District Statistics Report		Confirmed Community Cases (15,598) as of 21/08/2022, Time: 5:00pm	
Geographic Area	Confirmed Community Cases	Population (SBS PHC 2020)	Population Rate per 1,000 Population
<b>Samoa</b>	15,598	215,469	72.4
<b>Upolu</b>	12,704	168,186	75.5
Faleata 1	1,334	14,399	92.6
Vaimauga 4	1,260	7,248	173.8
Vaimauga 3	1,131	11,526	98.1
Faleata 2	940	12,301	76.4
Faleata 3	937	8,867	105.7
Vaimauga 1	668	8,890	75.1
Vaimauga 2	573	5,948	96.3
Sagaga 1	545	8,681	62.8
Anoamaa 2	428	5,336	80.2
Sagaga 2	375	6,914	54.2
Sagaga 3	354	6,191	57.2
Anoamaa 1	326	4,874	66.9
Faleata 4	321	4,827	66.5
Falealili 1	317	3,590	88.3
Sagaga 4	296	6,183	47.9
Aana Alofi 4	295	5,813	50.7
Aleipata Itupa I Lalo	271	4,489	60.4
Safata 1	238	4,151	57.3
Aana Alofi 1	224	4,716	47.5
Lefaga & Faleaseela	222	4,192	53.0
Siumu	215	2,534	84.8
Aiga I le Tai	211	6,154	34.3
Aana Alofi 3	197	3,637	54.2
Falelatai & Samatau	186	3,420	54.4
Safata 2	161	3,121	51.6
Lepa	157	1,482	105.9
Aleipata Itupa I Luga	155	1,383	112.1
Aana Alofi 2	127	2,500	50.8
Vaa O Fonoti	82	1,476	55.6
Falealili 2	81	1,429	56.7
Lotofaga	77	1,914	40.2
<b>Savaii</b>	2,890	47,283	61.1
Palauli 1	303	3,591	84.4
Faasaleleaga 2	250	3,813	65.6
Faasaleleaga 3	206	2,992	68.9
Vaisigano 1	193	2,277	84.8
Faasaleleaga 4	191	3,174	60.2
Vaisigano 2	187	1,717	108.9
Faasaleleaga 1	187	4,138	45.2
Salega 2	138	1,426	96.8

Palauli 3	133	2,503	53.1
Satupaitea	131	2,092	62.6
Gagaifomauga 2	127	2,058	61.7
Alataua Sisifo	126	1,817	69.3
Gagaifomauga 1	125	1,510	82.8
Palauli 2	109	3,420	31.9
Gagaemauga 2	104	1,785	58.3
Salega 1	99	2,177	45.5
Faasaleleaga 5	84	1,657	50.7
Gagaemauga 1	81	2,481	32.6
Gagaifomauga 3	77	1,512	50.9
Falealupo	39	1,143	34.1
(Unknown - no info reported for village or district of case)	4		