



COVID-19 Situational Report No. 423-429

WEEKLY REPORT

Ministry of Health

Date of report: August 28, 2022

Email: surveillance@health.gov.ws

Distribution: Health Emergency Operations Centre (HEOC)

Prepared by: National Health Surveillance & IHR Division

Tel: 66506/66507

New information in BLUE

Key Dates:

- Date Wuhan, China Declared Outbreak: 31/12/2019
- Date of Border Control activities commenced: 22/01/2020 (Travel Advisory and Health screening for incoming passengers)
- Date COVID-19 declared PHEIC: 31/01/2020
- Date Global Pandemic for COVID-19 Declared: 12/03/2020
- Samoa Declares State of Emergency for COVID-19: 21/03/2020
- Date of first repatriation flight: 24/03/2020
- COVID-19 PCR Testing Cartridges Received in Country: 08/05/2020 (controls received 15/05/2020)
- Date of First Coronavirus PCR Test Processed Within Country: 19/05/2020
- Date of first COVID19 historical case: 18/11/2020
- Date of last repatriation flight 2020: 08/12/2020
- Date of first repatriation flight 2021: 22/01/2021
- Date of first COVID-19 case in Samoa: 13/02/2021
- Date first batch of AstraZeneca (AZ) vaccine from COVAX arrived: 09/04/2021
- Date of first dose administration of AstraZeneca: 18/04/2021
- Date of second dose administration of AZ vaccine: 14/06/2021
- Date of 2-day lockdown for COVID-19 vaccination: 23/09/21 – 24/09/2021
- Date of first batch of Pfizer vaccine from New Zealand arrived: 21/10/2021
- Date of first dose administration of Pfizer: 22/10/2021
- Date of Pfizer vaccination roll out in schools for 12-17yrs: 25/10/2021
- Date of 1-day national vaccination drive: 19/11/2021
- National Lockdown commenced: 6pm 22/01/22 - 6pm 28/01/22
- Alert Level 2 commenced: 6pm 28/01/22 – 6pm 11/02/22
- Alert Level 1 commenced: 6pm 11/02/22 – 12am 19/03/22
- Date of school vaccination roll out for 5-11yrs: 05/03/22
- Alert Level 3 lockdown commenced: 12am 19/03/22 - 6am 06/04/22
- Alert Level 2 commenced: 6am 06/04/2022 – 12am 01/06/2022
- Alert Level 1 commenced: 12am 01/06/2022
- Date of last repatriation flight: 30/06/2022 (Flight origin – New Zealand)
- Date of most recent commercial flight: 27/08/2022 (Flight origin – New Zealand)

SECTION A. SAMOA SITUATION

I. Surveillance update

Reporting period: **August 21 at 2pm – August 28 at 2pm, 2022**

SAMOA COVID-19 SITUATION	Number of cases
Total of new COVID-19 positive cases over the last 7 days (both PCR and rapid antigen test - RAT from all sites*)	72
Cumulative number of COVID-19 positive cases since community transmission detected in March 17, 2022	15,664
Border Surveillance Cumulative number of COVID-19 positive cases detected at the Port of Entry (POE) since November 2020 International POE: <ol style="list-style-type: none"> 1. Faleolo International Airport <ul style="list-style-type: none"> • QF333 16th August – 2 new cases • FJ255 17th August – 1 new case • FJ255 21st August – 2 new cases • NZ990 25th August – 1 new case 	175

2. Matautu Wharf	
<ul style="list-style-type: none"> No cases detected 	
Cumulative number of COVID-19 positive cases (border and community cases)	15,839
COVID-19 admissions Total number of COVID-19 positive cases admitted to TTM Hospital since community transmission in March 17, 2022 – 334 admissions Total number of cases discharged from TTM hospital – 296 discharged home <u>Currently in the last 24hrs:</u> <ul style="list-style-type: none"> 9 hospital admissions <ul style="list-style-type: none"> No ICU patient 	
Total of new COVID-19 related deaths in the last 7 days	0
Cumulative number of COVID-19 related deaths since community transmission detected in March 17, 2022**	29
Rapid antigen testing (RAT)	187,397
Cumulative number of RATs conducted (as of 16/08/22 at 02:00pm)***	

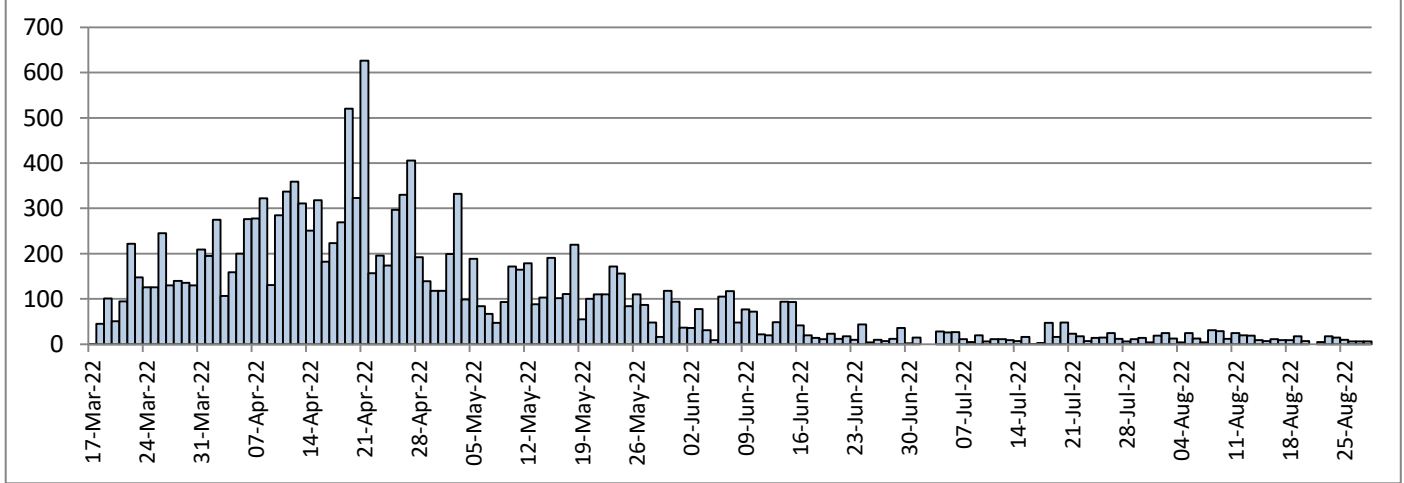
* The sites include all health facilities, private clinics, testing sites and self-reporting

**The death count is subject to change following full verification of all reported COVID-19 deaths from all health facilities.

Note: There are other deaths among registered cases that are not primarily caused by COVID-19.

***The test count is subject to change to data cleaning and when data becomes available

Figure 1. COVID-19 epicurve – New daily confirmed community cases by date of notification



Note: The cut off for daily reporting is 2pm, therefore numbers reporting after 2pm will be reflected in the next reporting periods' count.

Figure 2. Weekly total of community cases vs 7-day rolling average

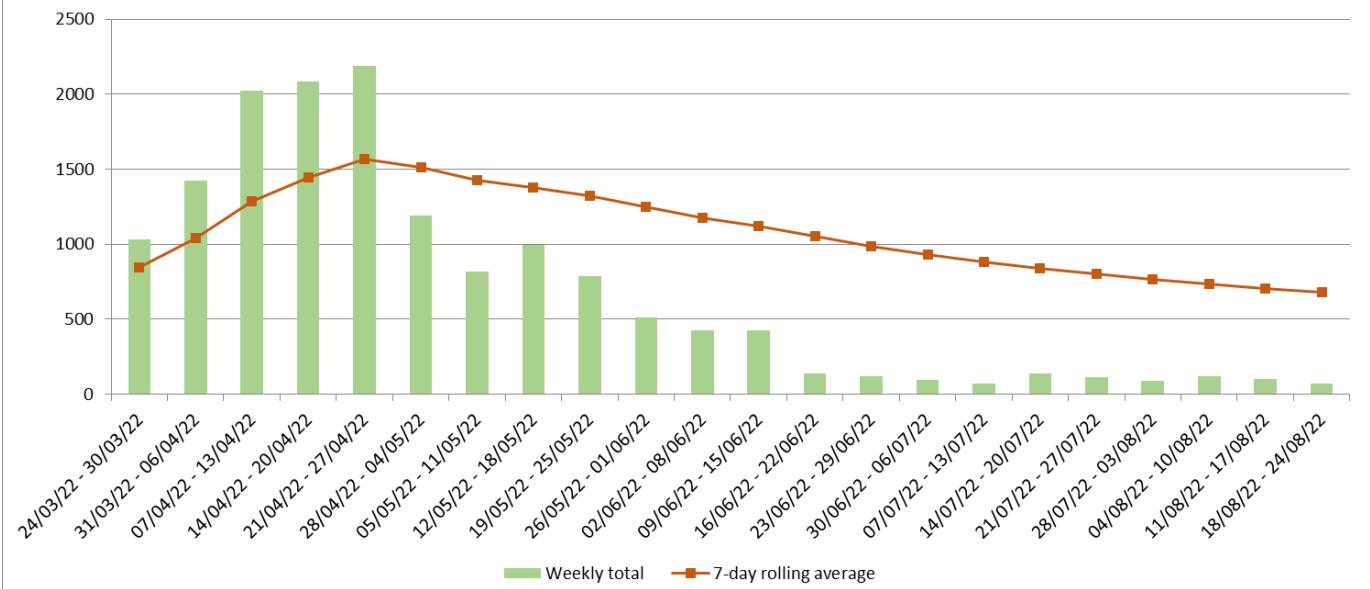
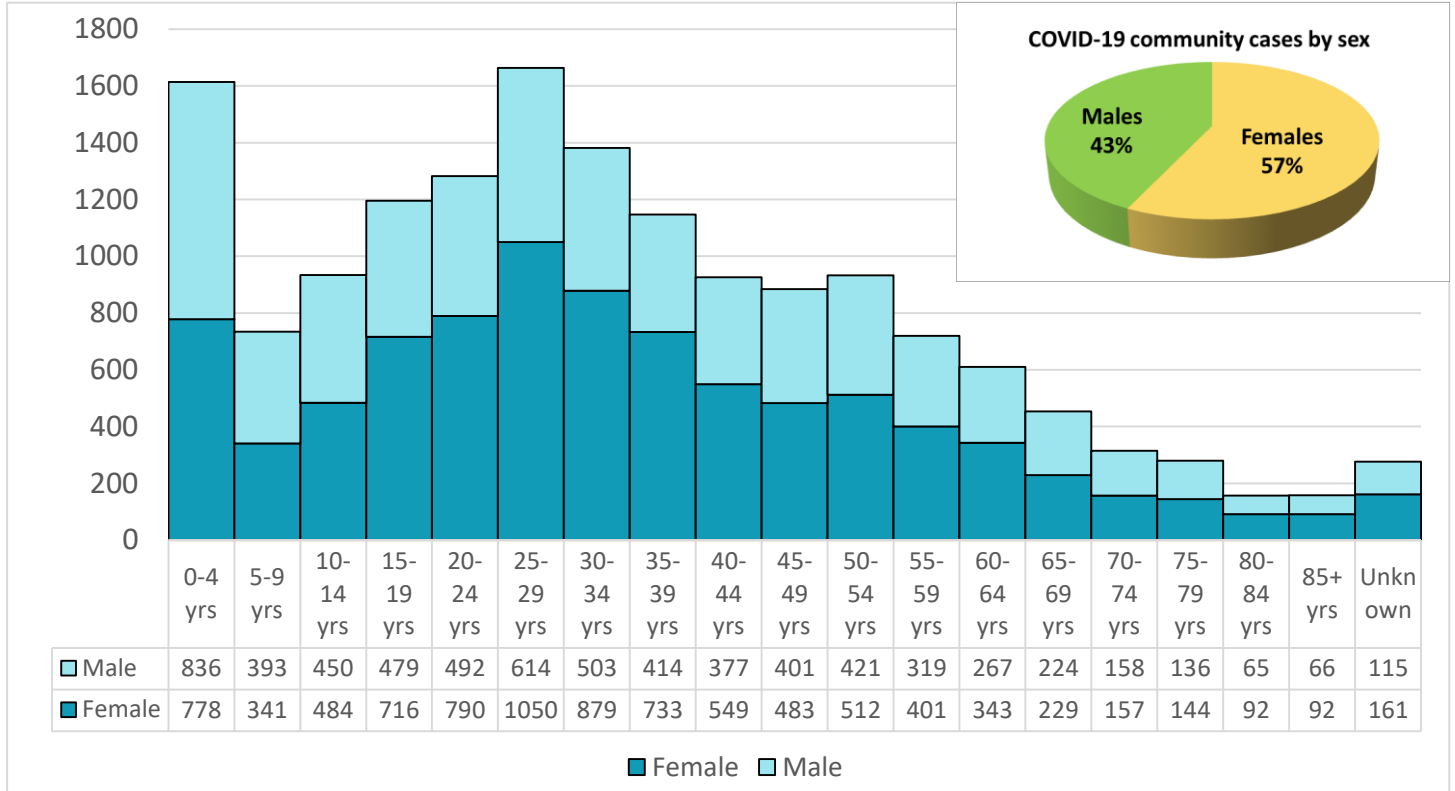


Figure 3. Cumulative community cases since community transmission on March 17, 2022 by age group and sex



Note: Of the total reported community cases, 10.3% are children between 0-4 years and about 1.5% were reported to have been admitted.

Table 1. Cumulative community cases since March 17th by Island of Current Residence

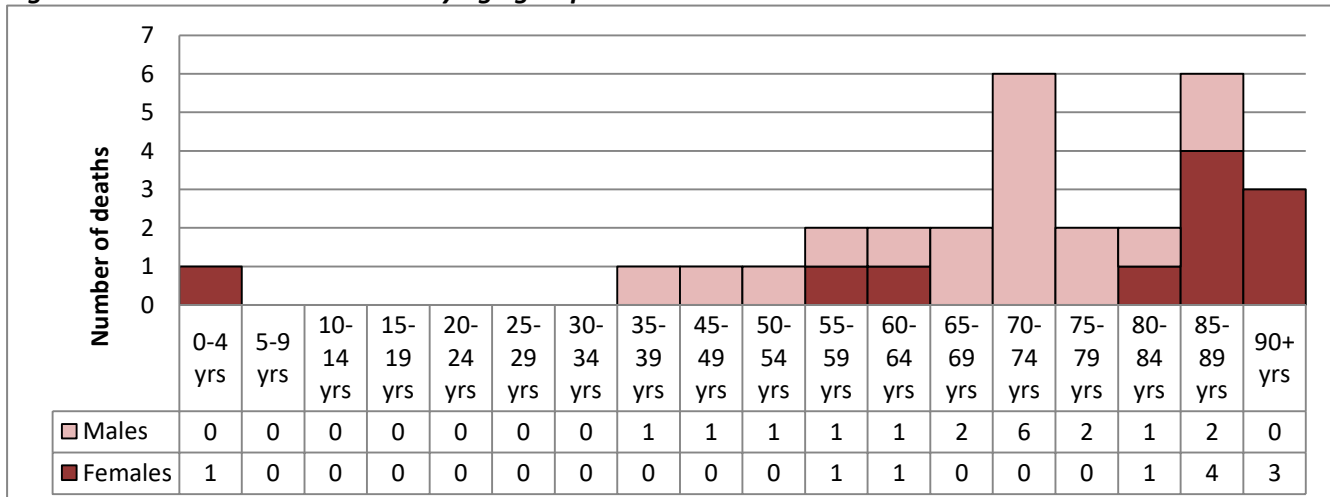
Island	Number of cases	% of cases
Upolu	12,755	81.4%
Savaii	2,891	18.5%
Manono Tai	18	0.1%
TOTAL	15,664	100.0%

Sources of notification of COVID-19 community cases are summarized in Annex A. COVID-19 community cases by districts are summarized in Annex B.

COVID-19 MORTALITY ANALYSIS

Cumulative number of COVID-19 related deaths	29 deaths
Age range	1 yr – 94 yrs
Average age	71 yrs

Figure 4. COVID-19 related deaths by age group and sex



II. COVID-19 vaccination update

As of **08:00am Local Time August 28, 2022**

- AEFI for COVID-19 vaccines continue to be monitored without any major reactions to report.
- First round of booster doses administered to date is **78,168**.
- Second round of booster doses administered to date is **766**.

Table 2. Samoa's COVID-19 vaccination status

Age group	Target Population	FIRST DOSE		SECOND DOSE	
		Number	%	Number	%
18yrs +	121,891	122,270	>99%	114,241	94%
12 – 17 yrs	27,880	28,402	>99%	25,834	93%
5 – 11 yrs*	40,638	40,354	99%	37,330	92%

*The 5-11 year old vaccination roll out commenced on March 05, 2022. The administration of the second dose started on April 04, 2022.

Table 3. Details of donation and supply of COVID-19 vaccines

Date Received	Vaccine Type	Vials	Doses	Supplier/Donated by
9-Apr-21	AstraZeneca	2,400	24,000	COVAX
14-May-21	AstraZeneca	2,880	28,800	COVAX
9-Jul-21	AstraZeneca	1,000	10,000	DFAT AUS
15-Jul-21	AstraZeneca	1,000	10,000	DFAT AUS
26-Jul-21	AstraZeneca	3,000	30,000	DFAT AUS
5-Aug-21	AstraZeneca	2,640	26,400	COVAX
19-Aug-21	AstraZeneca	11,200	112,000	Japan via COVAX
21-Oct-21	Pfizer	3515	17,575	New Zealand
28-Oct-21	Pfizer	1,670	8,350	New Zealand
28-Oct-21	AstraZeneca	2,400	24,000	New Zealand via COVAX
6-Nov-21	Pfizer	1,455	7,275	New Zealand
20-Nov-21	Pfizer	1,670	10,020	New Zealand
27-Nov-21	Pfizer	1,000	6,000	New Zealand
18-Dec-21*	AstraZeneca	270	2,700	DFAT AUS
08-Jan-22	Pfizer	585	3,510	New Zealand
19-Jan-22	AstraZeneca	200	2,000	DFAT AUS
01-Feb-22	AstraZeneca	1,000	10,000	DFAT AUS
05-Feb-22	Pfizer	750	4,500	New Zealand
12-Feb-22	Pfizer	830	5,000	New Zealand
19-Feb-22	Pfizer	420	2,520	New Zealand
26-Feb-22	Pfizer	386	2,320	New Zealand
06-Mar-22	Paediatric Pfizer	3,000	30,000	New Zealand
19-Mar-22	Paediatric Pfizer	1,000	10,000	New Zealand
22-Mar-22	Adult Pfizer	1,620	9,720	New Zealand
30-Mar-22	Adult Pfizer	11,700	70,200	DFAT Australia
09-Apr-22	Paediatric Pfizer	3,000	30,000	New Zealand
24-Apr-22	Adult Pfizer	6,825	40,950	DFAT AUS
01-May-22	Paediatric Pfizer	1,000	10,000	New Zealand
01-May-22	Adult Pfizer	7,605	45,630	US donation via COVAX
06-Jul-22	Paediatric Pfizer	3,000	30,000	New Zealand
Total		79,006	623,380	

*This batch was discarded due to breach of cold chain; exceeded 8°C for more than 24hrs prior to arrival into Samoa

III. Laboratory Update

As of **08:00am Local Time August 28, 2022**

- **Received 1,700 GeneXpert cartridges from the Pharmaceutical Warehouse on August 26, 2022.**
- Total of **3,941 PCR GeneXpert cartridges** for COVID-19 testing were in stock for processing within country.
- COVID tests processed in country is summarized in the tables below.

Table 4. Classification of COVID-19 tests requested

Samples requested for	2020	2021	2022								TOTAL
			Jan	Feb	Mar	Apr	May	Jun	Jul	Aug	
Persons under investigation	52	35	6	3	230	1,250	793	872	450	230	3,921
Immigration	43	3,317	259	77	199	123	636	337	147	124	5,262
Isolation ward	-	-	51	133	105	1,524	1,534	2,282	39	77	33,421
Quarantined Passengers/staff	5,442	14,794	704	1360	1,804						
RAT confirmation	-	-	-	-	61						
Frontline workers	0	462	1,139	987	923						
Total	5,537	18,608	2,159	2,560	3,322	2,897	2,963	3,491	636	431	42,604

Source: Clinical Laboratory, TTM Hospital, MOH

*All people travelling overseas are assessed by the public health doctors for medical clearance and tested for COVID-19 (if required) prior to their travel.

IV. Commercial flights update

As of **02:00pm Local Time August 28, 2022**

1. A commercial flight NZ990 from New Zealand arrived on August 27, 2022 with 183 passengers.
2. A commercial flight FJ852 from Fiji arrived on August 27, 2022 with 43 passengers.
3. A commercial flight FJ853 from Fiji arrived on August 26, 2022 with 153 passengers.
4. A commercial flight NZ990 from New Zealand arrived on August 25, 2022 with 270 passengers.
 - Of the self-reports on Day 3 (August 28, 2022), 1 tested positive, 173 reported negative and 96 did not report.
5. A commercial flight FJ255 from Fiji arrived on August 24, 2022 with 176 passengers.
 - Of the self-reports on Day 3 (August 27, 2022), 113 reported negative and 63 did not report.
6. A commercial flight QF333 from Australia arrived on August 23, 2022 with 283 passengers.
 - Of the self-reports on Day 3 (August 26, 2022), 188 reported negative and 95 did not report.
7. A commercial flight NZ990 from New Zealand arrived on August 23, 2022 with 187 passengers.
 - Of the self-reports on Day 3 (August 26, 2022), 95 reported negative and 92 did not report.
8. A commercial flight FJ168 from Fiji arrived on August 22, 2022 with 168 passengers.
 - Of the self-reports on Day 3 (August 25, 2022), 116 reported negative and 52 did not report.
9. A commercial flight FJ255 from Fiji arrived on August 21, 2022 with 155 passengers.
 - Of the self-reports on Day 3 (August 24, 2022), 2 tested positive, 94 reported negative and 59 did not report.
10. A commercial flight NZ990 from New Zealand arrived on August 21, 2022 with 178 passengers.
 - Of the self-reports on Day 3 (August 24, 2022), 123 reported negative and 55 did not report.
11. A commercial flight NZ990 from New Zealand arrived on August 20, 2022 with 174 passengers.
 - Of the self-reports on Day 3 (August 23, 2022), 84 reported negative and 90 did not report.
12. A commercial flight NZ990 from New Zealand arrived on August 18, 2022 with 287 passengers.
 - Of the self-reports on Day 3 (August 21, 2022), 96 reported negative and 191 did not report.

V. Port health update

Reporting period: **August 21 - 27, 2022**

Port Health clearance summary on the following vessels at the Matautu Wharf and aircrafts at Faleolo International Airport in this reporting period:

- **Vessels**
 - 3 fishing vessels
 - 3 container vessels
 - 1 cargo/passenger vessel
 - 7 yachts
- **International flights**
 - 49 passenger flights
 - 1 cargo flight
 - 1 private

Table 5. Matautu Wharf health clearance

Date	Vessel name	ETA	Vessel type	Crew	PAX	Last port	Remarks
21-Aug-22	MV Vanuatu Chief	1330hrs	Container	25	1	Nukualofa, Tonga	Health Clearance Granted
22-Aug-22	LUCKY GIRL	0600hrs	Yacht	4	0	Bora Bora, French Polynesia	Health Clearance Granted
22-Aug-22	ARKADIA	0600hrs	Container	20	1	Oakland, USA	Health Clearance Granted
22-Aug-22	FV CHU HUAI 888	0700hrs	Fishing	13	0	Fishing Ground	Health Clearance Granted
22-Aug-22	Ruth	1800hrs	Yacht	2	0	Vaitape, Bora Bora	Health Clearance Granted
23-Aug-22	Southern Pearl	0600hrs	Container	19	0	Funafuti	Health Clearance Granted
23-Aug-22	Ming Maan Shyang 38	2200hrs	Fishing	12	0	Taiwan	Health Clearance Granted
24-Aug-22	Sierra Wind	0700hrs	Yacht	2	0	Pagopago	Health Clearance Granted
24-Aug-22	Toamoana 3	0830hrs	Fishing	12	0	Fishing Ground	Health Clearance Granted
25-Aug-22	X-Wing	0600hrs	Yacht	2	0	Pagopago	Health Clearance Granted
25-Aug-22	IKIGAI	1200hrs	Yacht	2	0	Bora Bora, French Polynesia	Health Clearance Granted
26-Aug-22	CHAPS	0700hrs	Yacht	2	0	Bora Bora, French Polynesia	Health Clearance Granted
26-Aug-22	Pania	0800hrs	Yacht	7	0	Bora Bora, French Polynesia	Health Clearance Granted
27-Aug-22	LTC Kalopaga	0612hrs	Cargo/ Passenger	12	0	Nukunonu, Tokelau	Health Clearance Granted

All 14 vessels complied with Samoa's entry requirements

Table 6. Faleolo International Airport

Date	Aircraft reg.	Flight #	Flight type	ETA	POE	PAX	CREW	Refused entry pax	Remarks
21-Aug-22	ZKNNF	NZ0990	Commercial	1400hrs	AKL	178	7	0	Health Clearance Granted 3 RATs
21-Aug-22	DQFAD	FJ255	Commercial	1615hrs	NAN	155	6	1*	Health Clearance Granted 3 RATs / 2 PCR
21-Aug-22	ZK-OCB	AO9582	Private Flight	2230hrs	AKL	6	3	0	Health Clearance Granted
22-Aug-22	5W-LOR	TA502	Commercial	0945hrs	PPG	5	1	0	Health Clearance Granted
22-Aug-22	5W-LOR	TA508	Commercial	1145hrs	PPG	5	1	0	Health Clearance Granted
22-Aug-22	5W-LOR	TA512	Commercial	1433hrs	PPG	4	1	0	Health Clearance Granted
22-Aug-22	DHFAH	FJ168	Commercial	1612hrs	NAN	168	7	0	Health Clearance Granted 1(RAT/PCR)
22-Aug-22	5W-LOR	TA518	Commercial	1638hrs	PPG	4	1	0	Health Clearance Granted
23-Aug-22	5W-LOR	TA502	Commercial	0937hrs	PPG	5	1	0	Health Clearance Granted
23-Aug-22	5W-LOR	TA508	Commercial	1140hrs	PPG	2	1	0	Health Clearance Granted
23-Aug-22	5W-FAW	OL219	Commercial	1152hrs	PPG	14	2	0	Health Clearance Granted
23-Aug-22	ZKNNND	NZ0990	Commercial	1400hrs	AKL	187	8	0	Health Clearance Granted 2PCR/1 RAT/2RAT+PCR
23-Aug-22	5W-FAW	OL221	Commercial	1453hrs	PPG	11	2	0	Health Clearance Granted
23-Aug-22	5W-LOR	TA512	Commercial	1459hrs	PPG	8	1	0	Health Clearance Granted
23-Aug-22	5W-LOR	TA518	Commercial	1655hrs	PPG	0	1	0	Health Clearance Granted
23-Aug-22	VHQPF	QF333	Commercial	1710hrs	BNE	283	13	0	Health Clearance Granted 2PCR/ 3 RAT
23-Aug-22	5W-FAY	OL217	Commercial	1714hrs	PPG	16	2	0	Health Clearance Granted
23-Aug-22	5W-FAW	OL223	Commercial	1751hrs	PPG	17	2	0	Health Clearance Granted
24-Aug-22	5W-FAW	OL217	Commercial	1114hrs	PPG	13	2	3*	Health Clearance Granted

24-Aug-22	5W-FAW	OL221	Commercial	1317hrs	PPG	13	2	0	Health Clearance Granted
24-Aug-22	5W-FAW	OL219	Commercial	1622hrs	PPG	13	2	0	Health Clearance Granted
24-Aug-22	DQFAF	FJ255	Commercial	1700hrs	NAN	176	8	6*	Health Clearance Granted 11RAT
24-Aug-22	DQFAH	FJ1257	Cargo flight	2000hrs	NAN	0	2	0	Health Clearance Granted
25-Aug-22	5W-LOR	TA502	Commercial	0942hrs	PPG	7	1	0	Health Clearance Granted
25-Aug-22	5W-FAW	OL891	Commercial	0958hrs	PPG	5	2	0	Health Clearance Granted
25-Aug-22	5W-LOR	TA508	Commercial	1155hrs	PPG	7	1	0	Health Clearance Granted
25-Aug-22	5W-FAW	OL219	Commercial	1215hrs	PPG	10	2	0	Health Clearance Granted
25-Aug-22	ZKNZQ	NZ0990	Commercial	1255hrs	PPG	270	14	0	Health Clearance Granted 1 RAT/ 1 PCR
25-Aug-22	5W-LOR	TA512	Commercial	1431hrs	PPG	2	1	0	Health Clearance Granted
25-Aug-22	5W-FAY	OL221	Commercial	1440hrs	PPG	14	2	0	Health Clearance Granted
25-Aug-22	5W-LOR	TA518	Commercial	1630hrs	PPG	9	1	0	Health Clearance Granted
25-Aug-22	5W-FAW	OL223	Commercial	1737hrs	PPG	3	2	0	Health Clearance Granted
26-Aug-22	5W-LOR	TA502	Commercial	0940hrs	PPG	5	1	0	Health Clearance Granted
26-Aug-22	5W-FAY	OL217	Commercial	1110hrs	PPG	14	2	0	Health Clearance Granted
26-Aug-22	5W-LOR	TA508	Commercial	1137hrs	PPG	7	1	0	Health Clearance Granted
26-Aug-22	5W-FAY	OL221	Commercial	1333hrs	PPG	13	2	0	Health Clearance Granted
26-Aug-22	5W-LOR	TA512	Commercial	1452hrs	PPG	8	1	0	Health Clearance Granted
26-Aug-22	DQFAD	FJ853	Commercial	1628hrs	NAN	153	6	0	Health Clearance Granted 5 RAT
26-Aug-22	5W-LOR	TA518	Commercial	1635hrs	PPG	9	1	0	Health Clearance Granted
26-Aug-22	5W-FAW	OL219	Commercial	1637hrs	PPG	14	2	0	Health Clearance Granted
26-Aug-22	5W-LOR	TA522	Commercial	1831hrs	PPG	6	1	0	Health Clearance Granted
27-Aug-22	DQFAQ	FJ852	Commercial	0650hrs	HNL	43	6	0	Health Clearance Granted 1 RAT
27-Aug-22	5W-LOR	TA502	Commercial	0945hrs	PPG	6	1	0	Health Clearance Granted
27-Aug-22	5W-LOR	TA508	Commercial	1149hrs	PPG	9	1	0	Health Clearance Granted
27-Aug-22	5W-FAW	OL219	Commercial	1252hrs	PPG	16	2	0	Health Clearance Granted
28-Aug-22	5W-LOR	TA512	Commercial	1441hrs	PPG	7	1	0	Health Clearance Granted
27-Aug-22	5W-FAW	OL221	Commercial	1458hrs	PPG	15	2	0	Health Clearance Granted
27-Aug-22	5W-LOR	TA512	Commercial	1634hrs	PPG	7	1	0	Health Clearance Granted
27-Aug-22	5W-FAW	OL223	Commercial	1910hrs	PPG	15	2	0	Health Clearance Granted
27-Aug-22	ZNNC	NZ990	Commercial	2146hrs	AKL	183	7	0	Health Clearance Granted 2 PCR

All 50 flights complied with Samoa's entry requirements

Some passengers were swabbed on arrival either PCR or RAT due to the following reasons:

1. *Symptomatic passengers identified during the health screening and public health observations*
2. *Passengers that lost the hard copy of their covid test/vaccination card but they have the electronic copy on their phones*
3. *Passengers who have exceeded hours of their covid test due to flight delays*
4. *Passengers who travel from high risk areas, and those with multiple transits*

All passengers tested upon arrival have returned negative results for COVID-19.

***A total of ten (10) passengers in this reporting period were denied entry due to: (1) Failure to provide a negative COVID-19 test result, and (2) Failure to complete vaccination 14 days prior to departure to Samoa.**

VI. Risk communication and community engagement update

- Continue to Disseminate all health information on preventive measures of COVID-19 through Vaccination Sites and media outlets
- Most Calls received at the MOH Call Centre since the 14th April, 2022 were public inquiries on vaccination sites and operations.
- Several issues raised through the media monitoring reports have been addressed by way of public notices, statements and reminders to the public to utilize government websites and Facebook to manage COVID-19 'infodemic' and misinformation.

ANNEX A. COVID-19 community cases by source of notification

Source of notification	Community Cases Notified in the last 7 days (August 22-28, 2022)	Cumulative Community Cases Notified
Private Health Providers		
Agape Clinic	2	2
Others	0	938
Health Facilities		
TTMH	35	5311
Others	0	5293
HEOC Surveillance and Case Finding		
Case investigations & Contact Tracing (NHSIHR MOH)	16	945
Self report online	4	1002
Call Centre	9	592
Others	0	549
Workplaces		
Others	0	1032
Total notified	66	15,664

ANNEX B. COVID-19 community cases by district

Weekly COVID-19 District Statistics Report		Confirmed Community Cases (15,664) as of 28/08/2022, Time: 5:00pm	
Geographic Area	Confirmed Community Cases	Population (SBS PHC 2020)	Population Rate per 1,000 Population
Samoa	15,664	215,469	72.7
Upolu	12,769	168,186	75.9
Faleata 1	1,339	14,399	93.0
Vaimauga 4	1,266	7,248	174.7
Vaimauga 3	1,137	11,526	98.6
Faleata 2	942	12,301	76.6
Faleata 3	938	8,867	105.8
Vaimauga 1	680	8,890	76.5
Vaimauga 2	576	5,948	96.8
Sagaga 1	545	8,681	62.8
Anoamaa 2	428	5,336	80.2
Sagaga 2	377	6,914	54.5
Sagaga 3	361	6,191	58.3
Anoamaa 1	329	4,874	67.5
Faleata 4	324	4,827	67.1
Falealili 1	317	3,590	88.3
Sagaga 4	303	6,183	49.0
Aana Alofi 4	296	5,813	50.9
Aleipata Itupa I Lalo	271	4,489	60.4
Safata 1	239	4,151	57.6
Aana Alofi 1	226	4,716	47.9
Lefaga & Faleaseela	223	4,192	53.2
Siumu	215	2,534	84.8
Aiga I le Tai	213	6,154	34.6
Aana Alofi 3	197	3,637	54.2
Falelatai & Samatau	188	3,420	55.0
Safata 2	161	3,121	51.6
Lepa	157	1,482	105.9
Aleipata Itupa I Luga	155	1,383	112.1
Aana Alofi 2	127	2,500	50.8
Vaa O Fonoti	81	1,476	54.9
Falealili 2	81	1,429	56.7
Lotofaga	77	1,914	40.2
Savaii	2,891	47,283	61.1
Palauli 1	303	3,591	84.4
Faasaleleaga 2	250	3,813	65.6
Faasaleleaga 3	206	2,992	68.9
Vaisigano 1	193	2,277	84.8
Faasaleleaga 4	191	3,174	60.2
Vaisigano 2	187	1,717	108.9
Faasaleleaga 1	187	4,138	45.2
Salega 2	138	1,426	96.8

Palauli 3	133	2,503	53.1
Satupaitea	131	2,092	62.6
Gagaifomauga 2	127	2,058	61.7
Alataua Sisifo	126	1,817	69.3
Gagaifomauga 1	125	1,510	82.8
Palauli 2	109	3,420	31.9
Gagaemauga 2	104	1,785	58.3
Salega 1	99	2,177	45.5
Faasaleleaga 5	84	1,657	50.7
Gagaemauga 1	81	2,481	32.6
Gagaifomauga 3	77	1,512	50.9
Falealupo	40	1,143	35.0
(Unknown - no info reported for village or district of case)	4		