



Savali



FREE

Published by the Ministry of the Prime Minister & Cabinet (M.P.M.C.)

Fagalii Airport in pipeline for revival

By Jasmine Netzler - Iose

The Fagalii Airport designed for inter-island travel between the two Samoas will be re-opened in a matter of weeks once all the pieces of the puzzle fall in place.

Confirming the move to re-commission the Airport since it was shutdown in January 2020 due to safety concerns for residents in the vicinity, Civil Aviation Minister Olo Fiti Vaai in an exclusive interview has reassured that the appropriate international security regulations addressing safety is a paramount issue initially addressed by Samoa Airport Authority prior to reopening the airstrip.

For instance, Olo reassured that prior to reopening Fagalii, the Pacific Aviation Safety Office (PASO), an international organization solely responsible for

regional regulatory aviation safety oversight service will conduct the safety inspection and make their recommendations.

Commercially, reopening Fagalii will resurrect businesses which have closed shop compounded by the restricted inter-island travel during the COVID19 unpredictable shut downs, added the Minister.

The Authority also recovering from the COVID19 revenue effects stand to benefit from landing fees and associated sources of incoming.

Olo also noted that American Samoa during the last round of Atoa o Samoa Executive meeting between the 2 Samoas in late July also requested Prime Minister Fiamē Naomi Mataafa and her delegation to reopen Fagalii for the convenience of regular travelers and business people between Samoa and the territory.

Con't page 5

Sao tāua o galuega fa'avaitaimi iā Samoa

Tusia: Tusiga Taofiga

"O le polokalame lenei, o se tasi o polokalame pito sili ona āoga ma tāua a le Mālō mo nai o tatou tagata Samoa sa'ili galuega," Leatinu'u Wayne So'oialo.

E lē fa'aitiitia le agaga me'eme'e o le afioga i le Minisitā o le Matāgaluega o Pisinisi, Alāmanuia ma Leipa (M.C.I.L.) iā Leatinu'u Wayne So'oialo, ona o le tāua ma

Fa'aauau itulau 12



Minisitā o le Matāgaluega o Pisinisi, Alāmanuia ma Leipa (M.C.I.L.) iā Leatinu'u Wayne So'oialo.



SMILE YOU'RE ON CANDID CAMERA: Find out why Justice Vui Clarence Nelson, Police Commissioner Auapaau Logoitino Filipino and SSAB's General Manager Tofilau Fiti Leung Wai are in a joyous mood. SEE DETAILS IN TODAY'S ISSUE.

Mata'itū suiga o le mauga mu i Vailulu'u, Am. Samoa



Ofisa Sinia Autū Fa'asaenisi o le Vaega o Su'esu'ega o Ele'ele ma Papama'a i le Ofisa o Va'ai Tau (Samoa's seismologist) iā Fuimaono Lameko Talia.

Tusia: Taunuuga Toatasi

O le saogālēmū ma le malu puipuia o nai o tatou tagata mai mala fa'alenua, o le va'ai mamao lea o lo'o i le Ofisa o Va'ai Tau a le atunu'u, ona o va'aiga ua i ai le mauga mu i Vailulu'u, Amerika Samoa.

I le taimi nei ua folasia manino e le Ofisa o Va'ai Tau, le tulaga ua i ai nei suiga ogaoga o le tau, ma ua

va'aia ai nisi o mauga mu o lo'o ua alia'e ane i Amerika Samoa e pei ona i ai le mauga mu i Vailulu'u.

E silia ma le 100 mafui'e ua fa'amauiina e le Ofisa o Va'ai Tau a Samoa i le amataga o leni masina talu ona tula'i mai lea fa'afitauli.

I le feiloa'iga a le Savali ma le Ofisa Sinia Autū Fa'asaenisi o le Vaega o Su'esu'ega o Ele'ele ma Papama'a i le Ofisa o Va'ai Tau (Samoa's seismologist) iā

Fuimaono Lameko Talia, sa ia tā'ua ai le tatau i le tatou atunu'u ona nofo sauniuni pea, auā e lelei lava le fou mai o se galu ma lefulefu o se mauga mu, ae ua tapena i ai Samoa.

"O lo'o fa'aauau pea ona matou mata'itūina le tulaga o lo'o fa'agasolo ai fuafuaga i totonu o Manu'a, ona o lo'o fa'amauiina lava i aso uma le lūlū o mafui'e.

Fa'aauau itulau 10



AMATA SAU TEUGATUPE E TEU-FAAFAIGALUEGA

Asiasi mai i le tatou Upega Tafailagi : www.utos.ws

Imeli mai i le : info@utos.ws

Valaau mai i le : 26949 / 29916

O loo iai foi le tatou  Facebook Page!



UNIT TRUST OF SAMOA
Smart investment for a better future.

Trading hours Mon - Fri (9am - 4pm)

SSAB
Simply the best

Welcome to Samoa Packages

CASH BASIS ONLY

FRI 5TH AUG - SAT 10TH SEP 2022

SSAB LOPE LOUNGE SET
2X SMALL COFFEE TABLE
WAS - \$1,940.00

\$1,380.00



SSAB LOPE LOUNGE SET
FILE CABINET WITH DOOR & GLASS
WAS - \$2,499.00

\$1,799.00



BLAIR SOFA BED
AKAI 32" TV

\$1,899.00
WAS - \$2650.00

ANKO 2SLICE TOASTER
GEVI 30L MICROWAVE
LIVING & CO RICE COOKER 7 CUP
SHELTON & CAMRY DINING
TABLE 8SEATE R.

\$1,699.00
WAS - \$2,173.00



BUY 2 FOR
\$750.00
WAS - \$1500.00



DRESSING TABLE
QUEEN BONNEL BED SET
\$1,599.00
WAS - \$2,140.00



ASTON DRESSER WITHOUT
MIRROR | QUEEN POCKET BED SET
\$2,100.00
WAS - \$3,200.00



DOUBLE POCKET BED
2X SWI PILLOW
\$1,270.00
WAS - \$1,609.00

COOLEX
GAS/ELECTRIC OVEN 4 BURNER
COOLEX 420LTR FRIDGE

\$2,750.00

WAS - \$3,350.00



COOLEX
GAS/ELECTRIC OVEN 4 BURNER
SAMSUNG FRIDGES 317L

\$3,250.00

WAS - \$3,800.00



COOLEX MICROWAVE 20L
ANKO CORDLESS KETTLE 1.5L
ANKO 2 SLICE TOASTER
WAS - \$423.00

\$299.00



GEVI MICROWAVE 30L
ANKO CORDLESS KETTLE 1.5L
ANKO 7 CUP RICE COOKER
WAS - \$567.00

\$450.00



Back on the agenda - Exports to Am. Samoa



At the Atoa o Samoa Executive meeting last July.



Solia Mutini ASG Director of Agriculture.

By Nanai Taofiga Laveitiga Tuiletufuga

Agricultural and meat exports (sausages, beef, pork etc.) to neighboring American Samoa will be revisited when the Atoa o Samoa Executive Meeting between the American Samoa Government, (ASG) and their local counterparts resume in Apia in September.

Via Samoa News, the territory's sole daily quotes ASG's Director of Agriculture Solia Mutini as saying that the decision will be finalized at the Atoa o Samoa talks scheduled for next month.

And Mutini told Samoa News the final decision "will be my call".

Dictated by the US Federal Governments uncompromising regulations exports to the territory from Apia continues to be a

struggle which has restricted local farmers and manufacturers to access the attractive export revenues sources based on to the strengthen of the U.S. dollar.

And three weeks ago, the issue resurfaced in American Samoa during the initial Atoa o Samoa Executive meeting between the two new Governments.

On the heels of the two Governments brainstorming, the same issue capture the attention of a top U.S. official, the Deputy Secretary of State Wendy Sherman.

Joining to fold, Sherman acknowledged that the U.S. trade rules can sometimes create barriers. And she assured Prime Minister Fiame Naomi Mataafa that she will look into it.

"I don't have a particular answer for you today, but I will certainly take the concern back and see if there is anything

that can happen," Sherman responded to the local media during a recent brief Press Conference at Faleolo International Airport with the Prime Minister.

For years, Samoa mainly the Agricultural Sector have been knocking on American Samoa's doors consistently to seek Uncle Sam's sympathy by relaxing its biosecurity regulations to allow agricultural exports and Samoa Made goods, (chocolate, coconut oil, jam, shampoo, body lotion etc.) to enter the US niche market with the Made in U.S.A. label.

Vailulu'u volcano under surveillance

By: Marc Membrere

The Samoa Meteorology Division, (Weather Office) is keeping a vigil that the series of earthquakes and tremors near the Manu'a Group will provoke an eruption of the underwater volcano Vailulu'u.

Manu'a residents according to international media reports confirm underwater activities have escalated since it was first felt in late July 2022.

With over 100 earthquakes recorded since the beginning of the month Principal Scientific Officer and Seismologist Fuimaono Lameko Talia is urging the public to remain alert and be prepared because the effects of an eruption will bring tsunami waves and volcanic ash to our shores.

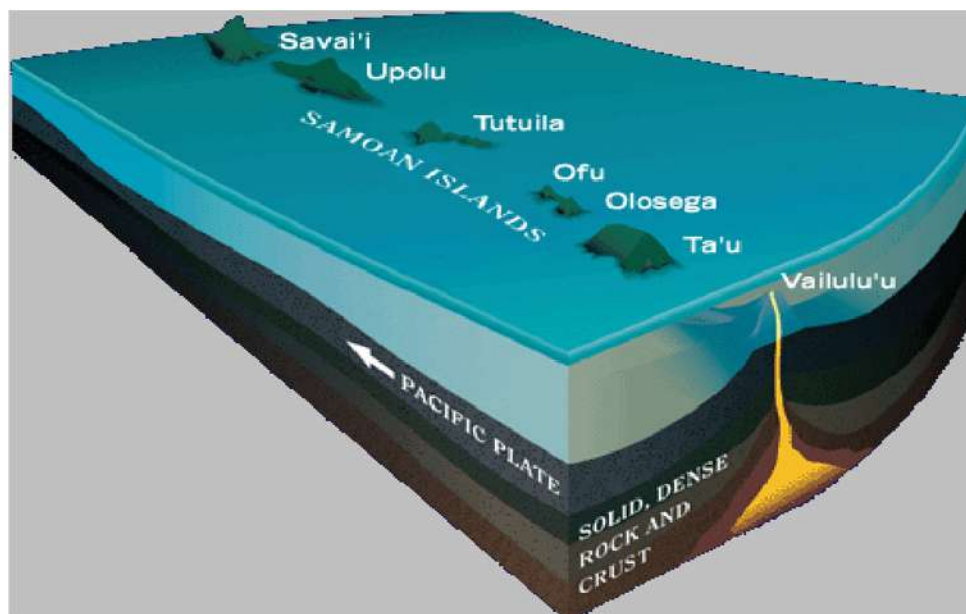
"We are concerned about tsunami waves, volcanic ash and smoke because these are toxic."

The local expert based at Mulinu'u in an exclusive interview with Savali Newspaper warned that if the seamount volcano in American Samoa erupts a tsunami will take 5 to 10 minutes to impact the whole country.

He explained that tsunami waves travel at a speed of an aircraft which would be 500 to 600kmph, which will impact all of Samoa, but the worst hit locations will be on the Southern and Eastern low-lying coastal areas.

And with average wind speed of 20 to 30kmph, the volcanic ash will reach the country within 5 hours of the eruption.

Volcanic Ash is expected to comb through the whole country from winds coming from



the East where Vailulu'u is located.

Fuimaono said the division continues to monitor the activities in the Manu'a Island Groups where tremors are recorded daily.

The situation according to him isn't getting any better with everyone being on the alert with the first information bulletin of the situation already released.

Monitoring is carried out every 24 hours. And in the event of an eruption, Fuimaono urges the public to wear masks and cover up and stay indoors.

Damage is expected not only to have

huge effects on the environment and infrastructure but will bring major health issues initiated by the toxicity in the acid rain including lung cancer.

Fuimaono is urging the public to be prepared and worse comes to worse, the Disaster Management Office(DMO) has already prepared evacuation routes for the public in the event of a tsunami.



EDITOR & PRESS SECRETARY
Nanai Taofiga Laveitiga Tuiletufuga
lave.tuiletufuga@mpmc.gov.ws
Tel: (685) 24-799 ext 747

SUB EDITOR SAMOAN
Tusiga Peseta Taofiga
tusiga.taofiga@mpmc.gov.ws

SUB EDITOR ENGLISH
Jasmine Netzler - Iose
jasmine.iose@mpmc.gov.ws

PRINCIPAL LAYOUT ARTIST
Elisapeta Palepoi - Asiatu
Te: 26398 ext. 786

PRINCIPAL PRODUCTION UNIT
Joshua Lafa'o'i
joshua.lafaoi@mpmc.gov.ws

PRINCIPAL COMMUNICATION OFFICER
Eirenei Ariu Toleafoa
eirenei.ariu@mpmc.gov.ws

SENIOR REPORTERS
Taunuuga Toatasi
taunuuga.toatasi@mpmc.gov.ws
Marc Membrere
marc.membrere@mpmc.gov.ws

SENIOR PRODUCTION UNIT
Vaitogi Asuisui Matafeo
asuisui.matafeo@mpmc.gov.ws

SENIOR MARKETING
Vala Dora Samoa
dora.samoa@mpmc.gov.ws

MARKETING OFFICER
Litia Taateo Aviata
litia.taateo@mpmc.gov.ws

ADMINISTRATION OFFICER
Tuusa'o Iose

Contact:
Ph: 26398 or 63222
savali@mpmc.gov.ws
Level 4, FMFMII
Government Building
Eleele Fou

Published by:
The Ministry of the
Prime Minister & Cabinet,
FMFMII Government Building.

Printed by:
Samoa Observer Ltd

Improving transportation links in Savaii

Jasmine Netzler- Iose

Two roads were officially opened in Savaii last week on Friday enhancing the transportation infrastructure on the island.

Satupaitea and Tapueleele are now boasting new roads following official opening ceremonies for the two infrastructures that will aid in easy access to plantations in these villages.

Minister of Works Transport and Infrastructure (MWTI) Olo Fiti Afoa Vaai said the new roads at Tapueleele and Satupaitea were completed with construction improvements including drainage for water to flow straight into the river during heavy rainfall.

He said the construction works were tendered out in October 2020 for both projects and following review of tender applications and recommendation FICO Construction Ltd was the successful bidder at a cost of \$895,934.81 SAT for the Tapueleele development while Savaii Transport Ltd won the bid for the Satupaitea road works with a price tag of \$748,897.54 SAT.

Both contracts and construction work for the two developments was initiated on 19 January 2021 once contracts were signed with the contractors.

Tapueleele is 1.5 kilometers in length, 4.5 meters in width including drainages and crossing pipes, and had another 700 meters added on and tarred included a 2.2 kilometer round about.

While the development at

Satupaitea saw 1.5 kilometers in length constructed and 1 kilometer tarred at a width of 4.5 meters.

Both these projects were funded under Government funds already budgeted for these major developments said Olo.

Works Minister Olo at the commissioning ceremony acknowledged the support by the Alii and Faipule of both Tapueleele and Satupaitea and Samoa for their patience while construction works were carried out.

He extended his appreciation to FICO Construction and the Savaii Transport Ltd for the successful completion of the projects in full compliance with engineering standards and regulations as well as to the Management of the Land Transport Authority (LTA) their meticulous role which ensured the success of both developments.



Former Public Enterprise Minister Lautafi Selafi Purcell performs the official ribbon cutting duties to open Vaega Satupaitea access road while Public Works Minister Olo Fiti Afoa Vaai far rights looks on.



Support for Covid19 Business Revival

AWARENESS WORKSHOPS SCHEDULE

Government of Samoa Financing Facility

The Government of Samoa has tasked the Development Bank of Samoa to facilitate the above named financing facility to support business revival from impact of Covid19. The purpose of this facility is to provide financing assistance to businesses that have been affected by Covid19. The overall objective is to strengthen and to revive businesses that have been operating pre-Covid19 and continue to today.

The Development Bank of Samoa (DBS) will conduct awareness workshops to inform and clarify the eligibility criteria to the facility and terms and conditions. The workshops will provide the opportunity for business owners and the DBS to clear any queries regarding access to this Government facility.

The workshops will be conducted for both Upolu and Savaii on the following dates.

For Upolu:

| | | |
|-------------------------|------------------|-----------------------------|
| Monday, 22 August 2022 | 9.30am – 11.00am | DBS conference room Level 6 |
| Monday, 22 August 2022 | 1.30pm – 3.00pm | DBS conference room Level 6 |
| Tuesday, 23 August 2022 | 9.30am – 11.00am | DBS conference room Level 6 |

For Savaii:

| Days | Time | Venue |
|-------------------------|------------------|----------------------|
| Monday, 22 August 2022 | 9.30am – 11.00am | SSAB Conference room |
| Monday, 22 August 2022 | 1.30pm – 3.00pm | SSAB Conference room |
| Tuesday, 23 August 2022 | 9.30am – 11.00am | SSAB Conference room |

Businesses are requested to register attendance to the DBS Office as follows.

For Upolu, please register direct to Goretta Fau by phone 7706095, email gorettaf@dbsamoa.ws or Afoa Aiufi Kelekolio phone 7706094 or email aiufis@dbsamoa.ws

For Savaii, please register direct to Migao Fanene phone 7706097 or by email migaot@dbsamoa.ws

Ma le faa'aloalo tele, MANAGEMENT.



Fesoasoani faapitoa o le Koviti19 mo Pisinisi

POLOKALAME FAALAUILoa FA'ALEA'OA'OGA

Faatupeina e le Malo o Samoa

O le faatinoina o le fesoasoani faapitoa a le Malo mo pisinisi ua aafia ile koviti19, ua faa'auala mai ile Faletupe o Atinae o Samoa. O lenei fesoasoani faanonogatupe e mo pisinisi ua faamaonia aafiaga ona o le Koviti19. O le faamoemoe o lenei fesoasoani, ina ia toe faoala ma faaleleia pisinisi sa tatala ma galueaina ae lei aafia Samoa ile koviti19 seia oomai ile taimi nei.

O le'a faatinoina e le Faletupe polokalame faalauiloa fa'alea'oa'oga e faailoa ma faamanino ai vaega e agavaa ai pisinisi, aemaise tuutuuga o lenei fesoasoani. O se avanoa taua lenei mo le Faletupe ma pisinisi e faasoa ma faamalamalama ai vaega taua ole fesoasoani a le Malo.

O le polokalame faalauiloa mo Upolu ma Savaii o le a faatinoina e pei ona folasia atu:

Mo Upolu

| Aso | Taimi | Nofoaga |
|---------------------------|------------------|-------------------|
| Aso Gafua, 22 Aukuso 2022 | 9.30am -11.00am | Potu fono DBS L.6 |
| Aso Gafua, 22 Aukuso 2022 | 1.30pm – 3.00pm | Potu fono DBS L.6 |
| Aso Lua, 23 Aukuso 2022 | 9.30am – 11.00am | Potu fono DBS L.6 |

Mo Savaii:

| Aso | Taimi | Nofoaga |
|---------------------------|------------------|----------------|
| Aso Gafua, 22 Aukuso 2022 | 9.30 am– 11.00am | Potu fono SSAB |
| Aso Gafua, 22 Aukuso 2022 | 1.30pm – 3.00pm | Potu fono SSAB |
| Aso Lua, 23 Aukuso 2022 | 9.30am – 11.00am | Potu fono SSAB |

E talosagaina pisinisi uma ina ia lesitala le auai mai ile Faletupe o Atinae.

Mo Upolu, faamolemole faafesootai Goretta Fau telefoni 7706095 poo le imeli gorettaf@dbsamoa.ws ma Afoa Aiufi Kelekolio telefoni 7706094 poo le imeli aiufis@dbsamoa.ws mo le lesitala.

Mo Savaii, faamolemole faafesootai Migao Fanene telefoni 7706097 poo le imeli migaot@dbsamoa.ws mo le lesitala.

Ma le fa'aaloalo tele,

PULEGA

Prisoners challenged to utilize creative talents

By Jasmine Netzler - Iose

Inmates serving time at Tanumalala Prison have been thrown a new life line with the launching of the Art Special Program explicitly developed as a platform encouraging the recipients to pursue their natural talents in drawing, carving and performing arts.

In partnership with the British High Commission Office, the initiative is part of the Ministry of Police and Prison rehabilitation initiative.

Police Commissioner Auapaau Logoitino Filipo said one of the programs objectives is to strengthen prisoners social developments of prisoners for re-integration back into society and the community after serving time.

"It has been proven that Arts therapy is very effective as most people are shy to share their issues with one another verbally but rather express their feelings on a drawing, carving or performing arts."

The enthused Commissioner confirmed that veteran artist Papalii Penehuro will be leading the program and does not doubt its success.

He also acknowledged the involvement and financial support provided by the British Government through the British High Commission Office.

"...the Ministry wishes to express its sincere gratitude

to the British government... for the ongoing financial support to our prisoners' rehabilitation development otherwise this wouldn't have been made possible."

He voiced his pride in being part of this important event and claims "always admire and value any effort to improve the standard of our village here at Tanumalala".

SSAB DONATES 400 BIBLES

Spiritually, the Samoa Stationary and Books Company has stepped in with a donation of 400 bibles for the prisoners.

"...during the opening of our library, we approached the CEO of SSAB - Afioga Tofilau Fiti Leung Wai for assistance 400 Bibles - and today, we are witnessing this significant contribution from SSAB.

"The Ministry would like to acknowledge with great appreciation the ongoing support of our business partner - Afioga Tofilau management and staff of SSAB," he said.

Aupaau said the donation will encourage prisoners to learn from their mistakes and at the same time improve their literacy.

He further acknowledged the contribution of other support networks towards developments in the area of rehabilitation.

Senior Supreme Court Justice Vui Clarence Nelson was also thanked for his contribution towards the rehabilitation and youth

projects at the prison. "Your ongoing influence in the development of our justice sector, particularly in encouraging suitable rehabilitation and re-integration programs for inmates especially juveniles are indeed a pillar of hope and support to not only our inmates but also the staff who are working tirelessly to ensure the outcome of these programs are successful."

And in attendance to provide encouragement and advice, Justice Vui Clarence Nelson urged the inmates to utilize the opportunity and their talents. He said this would pave a way forward for them and their families once they leave prison.

Building on this creative talent can also provide for them opportunities to earn a living to support their families.

The Commissioner before closing off the event also thanked all those involved at the prison for their support and tireless work ensuring the success of these projects.



Showing off art work already created by the prisoners at Tanumalala and the donation of bibles to grow their spiritual connection to God.

Fagalii Airport in pipeline for revival

From front page

As a result, he said the territory's Governments' request complemented with the intention to recoup businesses for locals, SAA is proceeding with preparations to reopen Fagalii subject to final approval by Cabinet.

Among the new fixtures to the Airport will be to extend the runway which is a crucial safety issue that will minimize any unfortunate incidents once the airport is back in full thrust, reassured Olo.

"Among the main intention will be to revive businesses and increase revenue for the Samoa Airport Authority (S.A.A) from landing fees and lower airspace charge," reiterated the Aviation Minister,



Fagalii Airport.

He gave no time frame of when this will eventuate but the Airport is currently being utilized by the Ministry of Police, Prisons and Corrections Service - Traffic Division.

HISTORY

The airstrip was paved and reopened on 6 July 2002 only to be de-commissioned

three years in January 2005 due to village concerns over safety and noise.

Four years later on 1 July, Polynesian Airlines reopened Fagalii airport and resumed with a service including international flights to American Samoa. That lasted until 2020 when it was deemed unsafe and was officially closed down



PUBLIC SERVICE COMMISSION
Komisi o Galuega a le Malo

Please address all correspondence to the Chairman.
Fa'amolemole fa'atuatusi uma mai fesootaiga i le Ta'ita'ifono.

VACANCY ADVERTISEMENT
Contract Positions

The Public Service Commission on behalf of the Government of Samoa invites applications from qualified applicants for the following positions. The positions are on contract for a 3-year term.

MINISTRY OF CUSTOMS AND REVENUE

- Position:** ACEO Risk and Compliance (RE002339)
Salary: SAT \$90,067.00 per annum

MINISTRY OF WOMEN, COMMUNITY & SOCIAL DEVELOPMENT

- Position:** ACEO Social Development (WS000614)
Salary: SAT \$90,067.00 per annum

The Application Form and Job Description can be uplifted from the Public Service Commission, Level 2, Flame Mataafa Faumuina Mulinuu II (FMFM II) Building, Apia or can be downloaded from website: <http://www.psc.gov.ws>.

Application Forms (R&S Form 2) are to be used by ALL Applications and are to be addressed to the Chairman. Applications must be submitted to PSC by, **Wednesday 24th August 2022 before 5.00pm.**

Late Applications after 5:00pm will not be considered. All incomplete Applications will not be considered for Shortlisting. Request for reconsideration will not be Accepted.

For more information, please contact the Senior Executive Services Division of our Office on telephone 22123 or email: ses@psc.gov.ws

Level 2, Government Building (FMFM II), Matagalalua, | P O Box 73, Apia, SAMOA
telephone: (685) 22123, 22124, 22125, 26478, 26479 | facsimile: (685) 24215
e-mail: psc@psc.gov.ws | website: www.psc.gov.ws

New Counsel General Office in American Samoa next year

By Nanai Taofiga Laveitiga Tuiletufuga

Tentative plans will see a new High Commission resident and Headquarters in Tafuna American Samoa housing the Samoa's Counsel General Office. The new complex is planned to be completed next year.

To date, the project has been granted a land use permit issued by the American Samoa Government's Department of Public Works.

Architectural design have been completed and Samoa's Counsel General based in the territory Fata Brian Kaio is working with relevant ASG agencies to obtain all the necessary permits for construction to start.

"This is the latest on the project that we intend to complete next year," Fata told Samoa News Daily Newspaper. "At the moment we are working with the American Samoa Power Authority and other Departments on small issues before we proceed with the ground breaking.

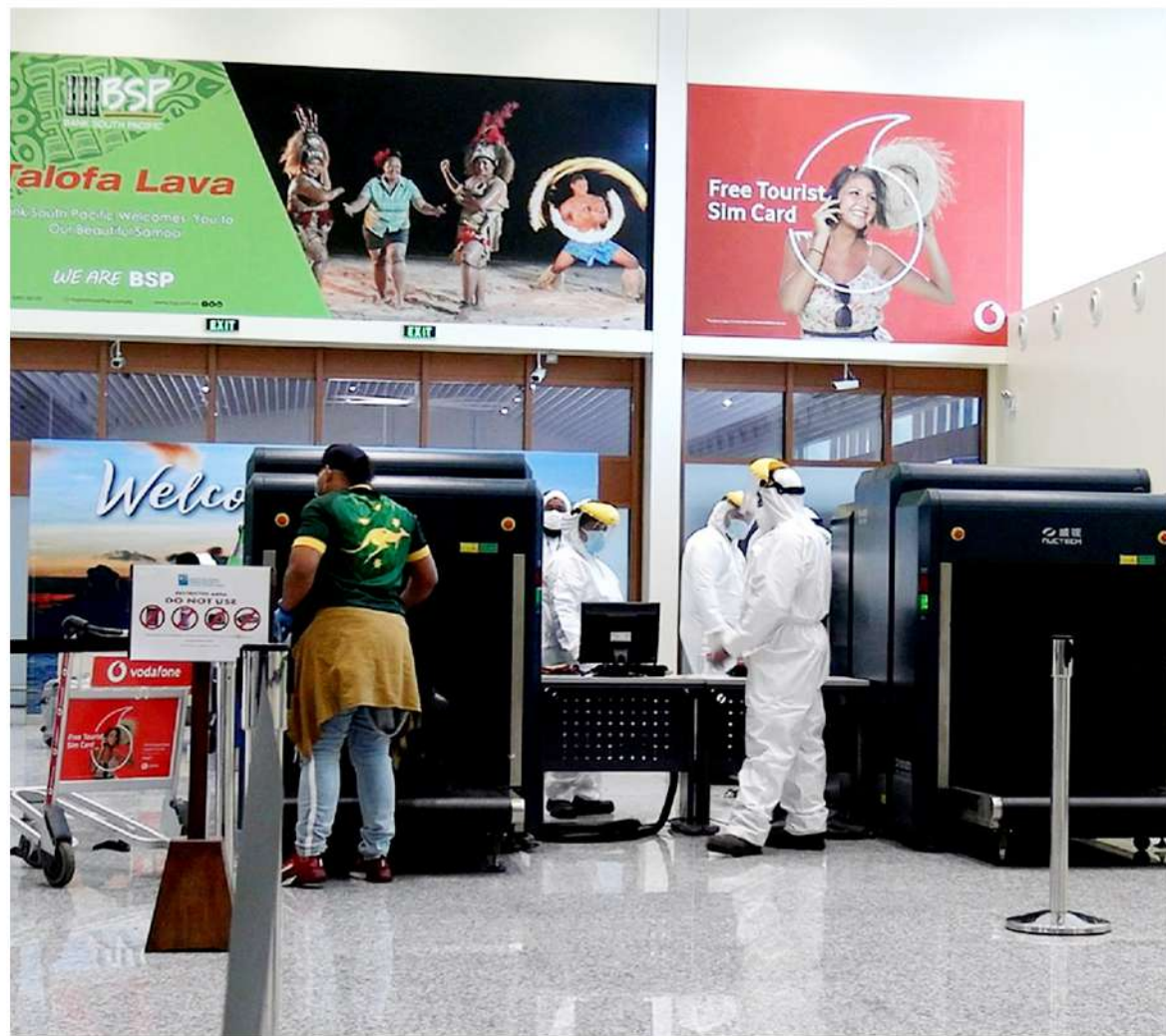
He added a chancellery for Samoa in the territory symbolizes the eternal cultural bonds and ties between the 2 Samoas, to cooperate for the benefit of Samoans.

And this was evident by the recent Atoa o Samoa Talks in the territory reaffirming the united and mutual cooperation between American Samoa and Samoa made in the best interest of residents from both countries.

"We have received the green light from the Government but just minor issues that needs to be sorted before we can proceed with the bidding process," Fata told Samoa News.

The parcel in question is part of the land exchange between the two Samoas that was initiated about 10 years ago — during the Togiola Administration — through a memorandum of understanding for use of the lands; and the language of the MOU was revamped in 2014 during the Lolo Administration.

American Samoa's land in Apia is located at Vailima.



A new state of the art C.T. Scan is expected to replace the present scans used at Faleolo International Airport.

Multi-Million C.T. Scan for Faleolo Airport in the works

By: Nanai Taofiga Laveitiga Tuiletufuga

The Faleolo International Airport stands to receive a multi-million tala upgrade which will greatly beef up its surveillance and entrance of unwelcomed guests with the intention to sneak or smuggle into the country contrabands.

In 12-months' time, the Government of New Zealand will be announcing a "multi-million tala commitment to further enhance border security through the providing and installation of a new age 3-Dimensional Computed Tomography (CT)

Technology X-Ray scanning equipment," Transport Minister Olo Fiti Vaai revealed at the handing over ceremony of the Identification Card System for the Faleolo International Airport employees also funded by New Zealand.

The Minister described the new 3D CT as a leapfrog for the Samoa Airport Authority to effectively keep out contra bands. And if possible, 3D-CT scans will also be installed at the inter-island Fagali'i Airport soon to be re-commissioned and the Matautu wharf under the Samoa Ports Authority.

While present scans at the

Faleolo Airport are suffice in screening departing passengers and incoming luggage, Olo said that the modern CT Scan to be commissioned under the proposed funding will minimize second guessing.

"The CT scan will provide more than one frame, (picture) but a complete scan of the luggage and cargo contents and any contra bands conceal on passengers," he explained.

The gift noted the Minister is a "milestone of New Zealand's commitment to the strengthening of regional security."



Samoa's Counsel General based in the territory Fata Brian Kaio.

New I.D. Card System for Faleolo Airport

By: Nanai Taofiga Laveitiga Tuiletufuga

Strengthening border security at the Faleolo International Airport to minimize uninvited and unauthorized visitors roaming inside the terminal is one of the targets of the Airport Identification Card System funded by a \$50 thousand tala grant provided by the New Zealand Civil Aviation.

Officially announced last Thursday, the significance of the new System was down played by New Zealand High Commissioner to Samoa, Dr. Trevor Matheson.

"In financial terms this is not a big spend from New Zealand but in terms of what we want to achieve and in terms of our relationship with Samoa this is significant," said a modest High Commissioner noting that the "the small little project to assist the Samoa Airport Authority with security improvements" is significant as the two countries

commemorate the 60 years of friendship articulated by the Treaty of Friendship that was recently commemorated by the Prime Ministers of Samoa and New Zealand.

It's also significant as the two countries commemorate the 60th anniversary of Diplomatic Relationships complimented by Samoa's 60th Independence Celebrations, he added.

"We are humbled, we are privileged to be able to continue to support Samoa in whatever way we can," he continued.

"Whether it's big, whether it's small each element is significant because we take a holistic view that whatever we can do to a fellow partner and friend in the Pacific Island and Samoa is one of most dearest friends, we're helping not just the people of Samoa but we're helping ourselves. We're helping our Pacific neighbors.

"We are a part of Polynesia and we have to be contributing to our



Airport Authority staff demonstrating the new ID Card System operational process.

fellow people."

Also significant is the importance to Faleolo International Airport as the sole designated port of entry for international flights into Samoa.

"It's very clear that without appropriate security and elements that you have than you don't have a secured border and without a secured border than

you run the risk of running into problems," noted Dr. Matheson.

"And having those secure systems in place at a critical juncture of your border, the Airport at Faleolo is absolutely critical."

In acknowledging the assistance, the Identification Card System is significant, complimented Minister of

Transport Olo Fiti Vaai taking not that Samoa is the first recipient of the 9 countries earmarked to receive the new technology.

Today, I am proud to state that Samoa is the first recipient of the 9 countries earmarked for this new technology

It will also "ensure that regional aviation activities are provided with the highest regard of safety and security," he added.

"The value of this new asset to our aviation system is endless, as it reinforces and ensures Samoa's satisfaction of international security requirements under ICAO Annex 17, that are currently implemented by the Samoa Airport Authority," reiterated the Transport Minister.

Paramount to the Minister is the timely arrival of the ID automated system as Samoa prepares to host the 2024 Commonwealth Heads of Government meeting.

Opeloge aims for Olympic Gold

Marc Membrere

The writing was on the wall for Don Opeloge to follow his Aunty Ele and Uncle Niu Sila's footsteps to fame and claim glory for his country and family.

Don is the latest Samoan to win a gold medal for his country from the 2022 Commonwealth Games in Birmingham Great Britain in weightlifting.

His Aunty Ele, a living legend and stalwart in women's weightlifting with Uncle Niu Sila, the pioneer who introduced the sport to his siblings and Opeloge household, both won Samoa's gold medals from the New Delhi, India in 2010.

And the newest super athlete has his eye set on an Olympic Gold medal with his coach and weightlifting guru who happens to be the President of the Samoa Weightlifting Federation Tuaopepe Jerry Wallwork is behind him 200%.

Opeloge took the top spot in the Men's 96kg with record braking lifts in the snatch (171kg), clean and jerked (201kg) elevating his superb performance of 381 total to claim a new Commonwealth Games record.

Speaking to the Savali Newspaper exclusively on Thursday, he said his focus now is to win gold at the Olympic Games which he promises to train harder for to achieve for Samoa.

His younger brother Jack also proved a success winning a silver medal in the Men's 109kg division. Something Opeloge is proud off - competing at the same event with his little brother.

And, especially thanking him for his achievements and giving the competition his all.

The older of the two brothers felt that it has been a long journey since preparations commenced last year, but looking back that has now paid off because of their achievements.

He expressed his thanks to Prime Minister Fiame Naomi Mataafa and her Cabinet as well as his family and friends for their support.

Aside from the Opeloge's achievements, lifter Vaipava Nevo Ioane gained a silver medal in the Men's 67kg division, and had set a new Commonwealth record for the Clean and Jerk with a lift of 166kg.

While the only Samoan female lifter to compete in Birmingham, Feagaiga Stowers won a silver medal in the Women's 87+kg division.

SWF President and top weightlifting team's coach Tuaopepe says the medal count reflected a fantastic achievement that made him proud.

And despite the knowledge that the country was expecting more gold medals he opted to consider the level of the competition being greater than what the team were used to being part of.

"...looking at the level of competition, the level has risen quite a lot since the last two Commonwealth Games and we are now competing against medalist from the Olympic Games", he said.

With one gold and three silver from his lifters, Tuaopepe pointed out the team's performance is the best he has seen so far.

"My team is a very young team so they've got a massive future in front of them and we are looking at the Olympic games now, not only to qualify but we are looking now to win medals," he said.

But, despite this he has his team ready to take up the challenge of winning Gold Medals at the 2024 Olympics in Paris France.



Samoa's Golden Boy Don Opeloge with his proud grandparents and aunty Ele Opeloge who is also a Commonwealth gold medalist in womens weightlifting from 2010 Commonwealth games in New Delhi.



Samoa National Provident Fund

PLEASE ADDRESS ALL CORRESPONDENCES TO "THE CHIEF EXECUTIVE OFFICER"

P.O. BOX 2010, APIA, SAMOA, TELEPHONE: 64800 (APIA & VAITELE) SAVAILI: 51321, FACSIMILE NO.: (685)20888. Email: info@npf.ws

Website: www.npf.ws

Request for Tenders (RFT)

Contract Name: Air Condition System Upgrading (Replacement) Level 1 & Level 2 – A Building SNPF Plaza RFT No: NPPFZ001 Date Issue: 25/07/2022

The **Samoa National Provident Fund** has available funds for **Upgrading of Condition System at Level 1 & 2 A Building at the SNPF Plaza** and it intends to apply part of the proceeds of this to payments under the contract. **The Tender is in two parts – Lot A. Supply and Delivery of equipment. Lot B. Installation of the equipment in Lot A.**

The **Samoa National Provident Fund (SNPF)** now invites sealed tenders from eligible and qualified Tenderers for **Upgrading (replacement) of Air Condition System at Level 1 & 2 A Building at the SNPF Plaza.**

Tendering will be conducted through the **open competitive tender (OCT)** procedures specified in the government of Samoa Tenders Board Guidelines for Procurement and Contracting: Goods and Works (GWGS) and is open to all Tenderers from Eligible Source Countries as currently defined in the by the **Government Samoa.**

Qualifications requirements includes: **technical, financial, legal and other requirements.** A margin preference for domestic contractors shall not be applied. Additional details are provided in the Tender Documents.

A complete set of Tender Documents in English can be uplifted for a non-refundable fee of **ST\$100.00** from **SNPF Office – Investment Department (Vanita Semisi Fanolua or Talava Leavasa).**

Tenders must be delivered to the address below at or before **16/09/2022.** Electronic tendering is not permitted. Late tenders will be rejected. Tenders will be opened on **16/09/2022 at 3pm**, in the presence of the Tenderers (or Tenderer's representatives), representative of contracting/procuring entity and SNPF Procurement Team, at the address, **below.**

Address (es) referred to in above is (are):

Attention: **Chief Executive Officer**
Samoa National Provident Fund
SNPF Building, Beach Road.
 Address: **Level 4**
 Floor /Room number: **Apia**
 City: **SAMOA**
 Country:

A pre-tender meeting will be held on **(Friday 12th August, 2022), 10:00am at SNPF Office Bored Room Level 4.**

Yours Sincerely

Pauli Prince Suhren
Chief Executive Officer

Samoa Head of State 29th U.S.P. Chancellor



HEAD OF STATE, His Highness Tuimaleali'ifano Va'aleto'a Sualauvi II.

By: Marc Membrene

Samoa's le Afioga ale Ao Mamalu ole Malo Tuimaleali'ifano Va'aleto'a Sualauvi II is the 29th Chancellor of the University of the South Pacific (USP).

His Highness, the Head of State new appointment was officially announced during the USP's graduation ceremonies at the EFKS Hall last week.

Tuimaleali'ifano takes over from the Premier of Niue Dalton Emani Makmau Tagelagi who held the post from July 2021 - June 2022.

Tuimaleali'ifano was sworn in as Head of State of Samoa on the 21st of July and is the holder of one of Samoa's four Tama Aiga titles, Tuimaleali'ifano since 1977.

A member of the Congregational Church Samoa (CCCS) and a Lay Preacher, he attained a Bachelor of Laws degree from the Australian National University and a Diploma in Theological Studies from the Malua Theological College.

Tuimaleali'ifano is a lawyer who had served Samoa as Principal State Solicitor in the Office of the Attorney General, as Public Trustee, as Public Defender in the Ministry of Justice, and Chief



Inspector of the Ministry of Police. He is also a former President of the Samoa Ex-Police Association, and is a member of the Samoa Law Society.

CHANCELLOR APPOINTMENTS

The Chancellor is appointed from a member country and is



usually the Head of State, and will hold this position for one year.

According to the University's "Handbook appointments made by the council" Article 5 of the Charter provides:

There shall be a Chancellor of the University who shall be the titular head of the University. Statute 5 provides:

(1) The Chancellor shall be appointed by the Council from one of the member countries, (2) The Chancellor shall hold office for a term of one year, (3) The Chancellor may resign by writing addressed to the Council or may be removed by resolution of the Council, (4) If the office of Chancellor becomes vacant before

the expiration of his or her term of office, the vacancy shall be filled at the next meeting of the Council or the Executive Committee (whichever occurs first) by another person from that member country for the remainder of his or her predecessor's term.

Con't next page



Family and friends surround the graduands marking a moment of pride as they obtain their certifications from their different areas of study.



GRADUATION
 Vice-Chancellor and President Professor Pal Ahluwalia noted at the ceremony 270 graduates achieved their certificates, diplomas, and degrees from the Pacific technical and Further Education Programme.
 From the 270 graduates 73 per

cent were women. He ended his speech with final congratulations to all the graduates for their hard work and efforts that had amounted to the successful completion of their studies at the University.



The many tireless night and sacrifices has finally paid off and the taste of success - sweet!

Fa'afetai i le Atua mo le valā'auina; Leota

Tusia: Tusiga Taofiga

O le tofia ai o le afioga iā Leota Fa'amatua'ina Ali'ielua Salani, e avea ma Ofisa Sili o Pulega o le Ofisa o Fuainumera Fa'amauina a Samoa, o se tofiga na ia ta'utino, o se fa'amanuiaga mai le Atua, a'o se miti fo'i ua loa tausaga o ia finau i ai.

O se tamāli'i ua 50 tausaga o le soifua mai le afio'aga o Avao i Savai'i, ua fa'aipoipo atu i lona faletua iā Fereita Simanu mai Sāluafata ma Saleilua ma e to'afā o la alo.

O Leota, o se tamāli'i sa amata faigaluega mai i le tausaga e 1992 i le mae'a ai o afā tetele na afātia ai Samoa i lenā vaitau, o 'Ofa ma Valelia, i le fa'atoā mae'a ai o lana vasega 13 i le Kolisi o Samoa.

I lona ulua'i galue ai i le Ofisa o Fuainumera Fa'amauina i lenā tausaga, sa malaga ai i atunu'u i fafo mo a'oa'oga mo le 6 vaiaso i le masina o Iulai 1992 sa ta'imua ai le S.P.C.

O lea a'oa'oga sa fitoitonu i galuega tau su'esu'ega ma le tu'ufa'atasia o lipoti i fa'amaumauga i itutino 'ese'ese o matafaiioi tau'ave a le Mālō ma le talitonuga o le lalolagi, o le fatu lea o so'o se atunu'u, o le sa'o ma moni fa'amaumauga e aoina mai lea taimi i lea taimi.

Mulimuli ane filifilia o ia, e malaga mo le ono masina i Iapani auā lava a'oa'oga patino i fa'amaumauga ma le aoina o fuainumera sa'o mo lipoti e fa'alagolago i ai fuafuaga mamao a le Mālō.

O ia a'oa'oga o se sao tāua lea i le unā'ia o lona ola finafinau



Afioga iā Leota Fa'amatua'ina Ali'ielua Salani, e avea ma Ofisa Sili o Pulega o le Ofisa o Fuainumera Fa'amauina a Samoa.

a'o feagai ai ma lona valā'auina, na ia fa'ailoa fo'i ina ua fa'atoā maua lana galuega, o lana miti lea sa va'ai mamao i ai, ia avea o ia ma Ta'ita'i i le lumana'i peita'i e ao ona amata sa le ipu vai ma tautua mo e o lo'o mua i malae.

E lē ma faitaulia fo'i le tele o isi a'oa'oga ma fonotaga fa'avāomālō sa fai ai Leota ma 'ave fu'a a Samoa e lotolotoi ai i tonu fai ma le talanoaina o tulaga i fa'amaumauga mo le manuia o atunu'u uma o le lalolagi aemaise

o Samoa lava ia.

Na galue Leota i le galuega fa'aOfisa i le Matāgaluega o Tupe i le 1997, a'o le 2001 na filifilia ai o ia e avea ma Ofisa Sinia Autū (Principal Officer) i le Vaega o le Statistic Unit, i lenā vaitau na'o e leai se avanoa Sinia sa i lea Vaega (Senior Officer).

Ina ua toe fetu'una'i faiga fa'avae ma Tulafono a le Mālō mo le Matāgaluega o Tupe ma le Ofisa o Fuainumera Fa'amauina mo le Fa'atuto'atasi o lea Ofisa o

le Mālō, na fa'avae ai loa le Vaega fou lea i lalo o le fa'amalu a le Ofisa o Fuainumera Fa'amauina a Samoa i le na'o le to'alua o le aufaigaluega, ma tofia ai Leota e le Kapeneta i lenā vaitau, e avea ma Ofisa Sili Lagolago mai le 2008 se'ia o'o mai i le 2022.

I lenā vaitau sa na'o le to'alua ai le aufaigaluega ua to'aiva lea ua i ai i le taimi nei, o le pine fa'amau lea, o le tupu ma ola lea itutino o le Ofisa, o se lamepa sa amata fa'asusulu e Leota i ona taimi a'o

fa'atoā amata fa'avaeina ai.

Fa'ailoa e Leota, e to'alua Ofisa Sili o Pulega sa tautua ai, o le afioga iā Muāgututi'a Sefuiva Reupena ma le afioga iā Ali'imuaumua Malaefono Ta'aloga ae fa'atolu fo'i ona ia tusi talosaga i le avanoa o le Ofisa Sili o Pulega, e fa'alua ona lē manuia lana taumafaiga ma le lona tolu, lea ua tali fa'aaliali mai ai le Atua.

Saunoa manino Leota, sa ia asu malie le ipu vai mo ona ta'ita'i ua mavae atu, na ia tautua fo'i ma fai le faiva o le faufautua a'o alo i faiva manaia a'o se'ei ai i lea tofiga.

Lenei ua ia pale mai, ma o le a fa'aauau pea galuega lelei ua tino mai, ma ia saga fa'atumauiina pea le mauālugaga ma le aloāia o auuanaga tau fa'amaumauga e momoli atu mo Samoa aoao aemaise fa'ai'uga fai a o tatou Ta'ita'i mo le atina'e ma le tamāo'āiga o le atunu'u atoa.

Na momoli le fa'afetai fa'apitoa a le afioga iā Leota, i le Palemia ma le Kapeneta, ona o le fa'atuatua ua tu'uina atu iā te ia, na te tau'aveina ai lenei tofiga tāua o le Mālō. Ua ia mautinoa fo'i o le 30 tausaga o lana tautua iā Samoa e ala i lea galuega, ua lava ta'oso ai ia, e ta'ita'ia le Ofisa o Fuainumera Fa'amauina mo lenei 3 tausaga.

Na ia fa'afetaia fo'i le nofo tatalo a ona 'āiga ua a'e manuia ai lana fa'atamasoāli'iga sa fitaituga i ai. O le pale ai o Leota i lenei tofiga, na ia fa'ailoa o le a tu'u atoa i ai le selau pasene o lona tomai ma lona agava'a, e faia ai mea sili mo le auuanaga ma le tautua auā Samoa ma ona tagata.

Mata'itū suiga o le mauga mu i Vailulu'u, Am. Samoa

Mai Ifulau muamua

"O mafui'e o se foliga va'aia muamua lea o mauga mu pe a pa."

Saunoa Fuimaono, o le mauga mu ua tupu mai i se vaega o Manu'a, o vaega vevela ia o mauga mu, ma e lē taitai tutusa le pa ma le tulaga lea sa tula'i mai i le mauga mu i Toga.

"O le itu tatou te popole ai o se galu, o lefulefu aemaise o le asu e sau mai le mauga mu, ona e 'o'ona.

"Afai ae pa le mauga mu i Vailulu'u, e mafai ona sau ai se sunami, ma e 5 i le 10 minute le vave e mafai ai ona o'o mai i Samoa.

"O le saosasoa o le galu sunami pei o le alu a le va'alele, e 500km i le 600km i le itula, ma e ono a'afia ai Samoa atoa, ae pito sili ona a'afia atu ai vaega po'o nofoaga mauālalalo o le atunu'u.

"E tatau ona fa'aeteete le atunu'u i le lefulefu e sau mai mauga mu, ona e mafai ona aumai e le savili ma le To'elau, ona o le itu tonu lea o lo'o tupu ai lea fa'afitauli.

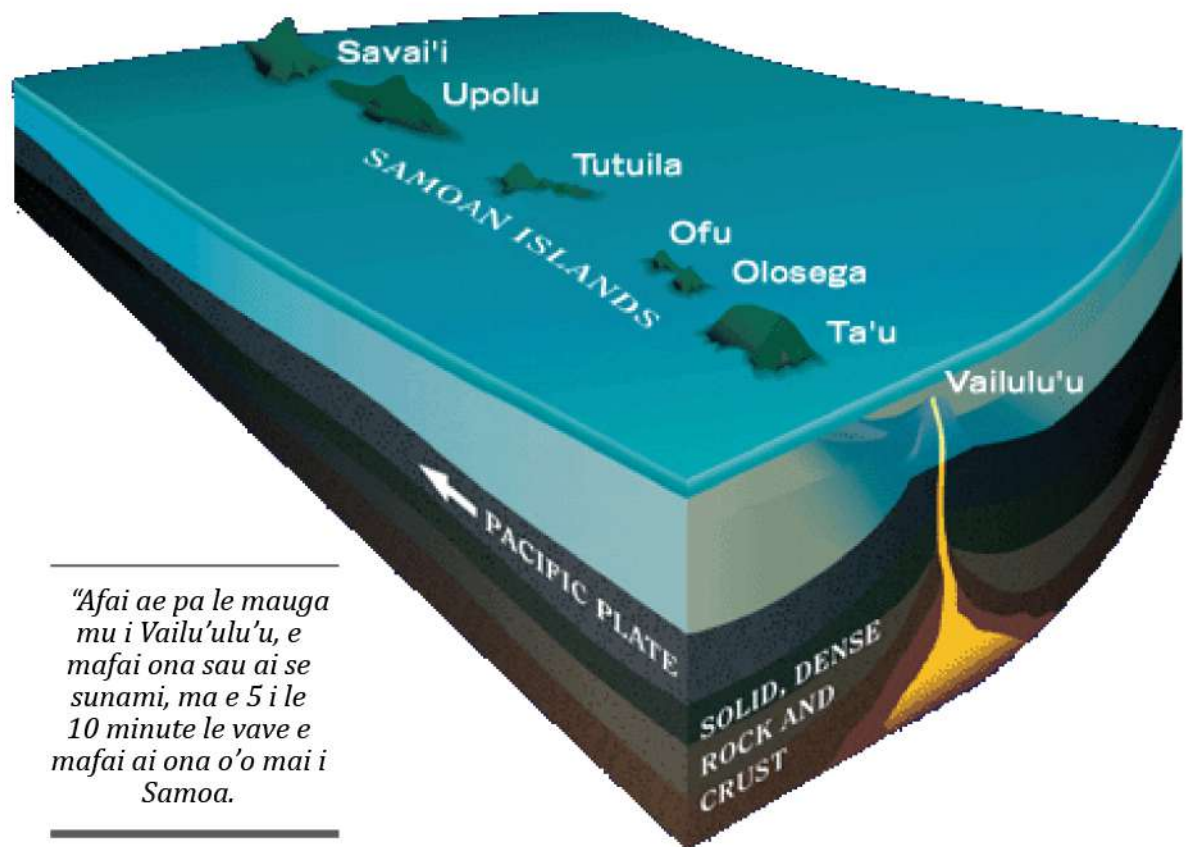
"E umi se taimi e upeupea ai le lefulefu i luga o ao, a o'o ina timu, ona sau lea o le 'o'ona o le lefulefu i le suātimu.

"O aso ua mavae sa ta'u e tagata mātutua lea tulaga, o le uasami, ona o le 'o'ona o le suātimu e mafua mai i le lefulefu o mauga mu.

"Ma e telē lona a'afiaga i tatou tagata, ona o le kasa 'o'ona lea e sau mai le lefulefu, ma e ono a'afia ai le kanesa o māmā."

Ua fautuaina mai ai fo'i le atunu'u, ina ia fai tali fofoga pe a alia'e le mauga mu, ma nonofo lelei i totonu o fale, aemaise lava i tamaiti lāiti, ona e tugā a'afiaga o le kasa o lo'o aumai e le mauga mu.

"O lo'o fa'aauau pea ona mata'itū tulaga o i ai le mauga mu, ona e le'o i ai se suiga, ma o le a logo puial'i pea le mamalu o le atunu'u i suiga ma gaoiga e tatau ona fa'atino i taimi uma."



"Afai ae pa le mauga mu i Vailulu'u, e mafai ona sau ai se sunami, ma e 5 i le 10 minute le vave e mafai ai ona o'o mai i Samoa."

Ia toe fuatā'ina e ua nofo sala i le to'ese



Tusia: Taunuuga Toatasi

O le Ola Toe Fuatā'ina, o se tasi lea o polokalame o lo'o faia i totonu o le to'ese i Tanumalala.

O se polokalame o lo'o toe aputiputi ai le ola fa'afouina o e ua nofo sala i le to'ese, ina ia mafai ona latou fa'atino ni galuega e tausi ai o latou 'aiga, pe ā mae'a ona tuli o latou fa'asalaga.

O ananafi (Aso Tofi, 18 Aokuso 2022) sa tatala aloāia ai le Polokalame Tusiata aemaise o le foa'i o Tusi Pāia mai le Faletusi o le S.S.A.B.

O lea pololamae Tusiata, o lo'o fa'atupe e le Mālō Peretania, a'o le foa'i o Tusi Pāia e 400 sa mā'au i ai le Kamupanī o le S.S.A.B.

I le saunoaga autū a le Komesina o le Matāgaluega o Leoleo ma Falepuipui ma le Ola Toe Fuatā'ina iā Au'apa'au Logoitino Filipino, na ia fa'ailoa ai le tāua tele o lea fa'amoemoe, ona ua le gata o le polokalame e fa'aauau ai pea le olaga fa'afouina o talavou, ae o le unā'ia fo'i e faitau le Tusi Pāia, ina ia maua ai pea e i latou a'oa'oga a le Ali'i mo le ola fa'aleagaga.

"Fa'afetai i le Mālō o Peretania

e tauala atu i lau susuga i le Komesina o Peretania i Samoa nei iā Robert Ower ona o le fesoasoani tāua ua mafai ai ona fa'atino lenei fa'amoemoe tāua mo tatou tagata o lo'o tuli o latou fa'asalaga."

"E fa'afetaia fo'i lau afioga Tofilau Fiti Leung Wai o le Pule Sili o le S.S.A.B. ma le Faletusi atoa, ona o lō outou sao tāua e ala i Tusi Pāia e 400 ua foa'iina mo le Falepuipui i Tanumalala.

"E i ai le talitonuga o nei meaalofa, o le a le gata ina ia tapu'e ai le ola fa'aleagaga, ae fesoasoani fo'i mo latou soifua a'oa'oina e ala i le faitautusi.

"O 'upu a le Tusi, e sili le manuia o le foa'i nai lo le na te talia."

Na fa'afetaia fo'i e le Komesina o Leoleo, le fesoasoani malosi o se tasi o Fa'amasino Sinia iā Vui Clarence Nelson i le polokalame o le toe fuatā'ina o olaga o e ua nofo sala i le falepuipui.

Na tā'ua e Vui, e tāua tele lenei polokalame tusiata, ona e le gata e tapena ai i latou e i ai le taleni o le tusiata mo le fa'aaliga tusitala i le masina o Novema, ae ua maua ai fo'i le itu fa'aleagaga e pei ona i ai Tusi Pāia ua tau'a'aina.

"Atonu e fesili se isi po'o le a le tāua o lenei polokalame?

"Ae i so'u manatu fa'atauva'a, e tolu vaega e mafai ona vaevaeina ai le āoga o lenei polokalame.

"Muamua, to'atele o e tuli fa'asalaga, e umi le taimi lea e nofo ai i totonu o le fale puipui, ma o le tāua lea o le polokalame lenei, e fa'aāoga ai le taimi, auā tasi lea auala e fa'aalu ai le taimi a'o tuli ai fa'asalaga, nai lo le nofonofo ma moe i totonu o le potu i le aso atoa e lei se āoga.

"O le vaega lua, e maua le seleni i le polokalame lea, auā e mafai ona fa'atau maua ai le seleni, o se tulaga manuia lea.

"Ma le vaega mulimuli, ia manatua e lē nonofo ai pea i totonu o le falepuipui, e i ai masina ma tausaga e mae'a ai ona tuli fa'asalaga ona aga'i lea i tua i 'aiga.

"Tasi lea auala e sa'ili ai seleni mo le tausiga o 'aiga ma fanau, ma o le ala fo'i lea e tāua ai polokalame nei, auā e uma ona fa'atino i totonu o le to'ese, ae toe fa'atino fo'i pe a aga'i i 'aiga, ma maua ai tupe e tausi ai 'aiga."



Tatalo, fautua ma tima'i i fanau; Leatinu'u



Minisitā o le Matāgaluega o Pisinisi, Alāmanuia ma Leipa iā Leatinu'u Wayne So'oialo.

Tusia: Tusiga Taofiga

A'o va'aia ai le fa'atupulā'ia pea o nisi o fa'afitauli e tutupu mai i 'ai latou ua fa'amanuiaina i galuega fa'avaitaimi i Niu Sila, Ausetalia ma Amerika Samoa, ua toe tu'uālalo ma tima'i mai ai le afioga i le Minisitā o le Matāgaluega o Pisinisi, Alāmanuia ma Leipa iā Leatinu'u Wayne So'oialo i mātua, ina ia galulue fa'atasi e 'ave le fautuaga sili ona lelei mo le lumana'i manuia ma le ta'uleleia o nei fanau.

O le fa'amalosi a Leatinu'u, ia momoli le lesone tāua i fanau ua fa'amanuiaina, ina ia tatalo ma anapogi, fa'atoga i le Atua o le talia o fa'afitauli o feagai pea ma le tagata mai lea taimi i lea taimi.

Aemaise o le tu'uālalo fa'amatua, ina ia 'aua ne'i mapu le lamepa o le ola finafinai i mea sili, fa'amaoni i le vala'auina, ma ia fa'aāoga tatau avanoa faigaluega ua aeae ai.

"Amuia outou ua outou pale i na galuega lelei, mauāluluga totogi ma vave tali i manaoga o 'āiga ma fanau o lo'o tapua'i atu, aea mea fai a ekalesia ma nu'u.

"Ae a tatou va'ai i nai isi tagata o lo'o tau sa'ili pea ni avanoa faigaluega, e le'o fa'amanuiaina i le taimi nei, o se tali fa'aaliali lenā o le tāua o le felagolagoma'i ma ia fa'amaoni i le galuega ua vala'auina ai."

Fa'aailoa e le afioga i le Minisitā, e tofule tagata ma lona fa'asinomaga, o lona uiga, o le pitolā'au tausoa fa'atasi a mātua, faifeau, pulega mamalu a ali'i ma faipule ma le Mālō le momoli o le 'upu alofa, e fautuaina ai fanau ina ia galulue ma le fa'amaoni ma usita'i.

O le ki lenā e talepe ai fa'afitauli ua alia'e mai, pe afai ua ulutino le fautuaga fa'amatua alofa i lana tama, ina ne'i ta'uvalea ma fa'atāsina i le ala.



Galuega fa'avaitaimi o lo'o galulue ai le mamalu o le atunu'u.

Sao tāua o galuega fa'avaitaimi iā Samoa

Mai le itulau muamua

le agaga lelei na fa'ama'ite ai le faigāpa'aga a Samoa, Niu Sila, Ausetalia ma Amerika Samoa mo le fa'afaigaluegaina o tatou tagata o lo'o tau sa'ili ni galuega auā se tupe maua mo le tausiga o 'āiga, a'o le tautuaina o nu'u ma ekalesia.

Peita'i so'o se mea lelei lava, e tatau fo'i ona i ai ni ona lu'itau ma ni fa'afitauli, ma o na vala tāua, o se a'oa'oga lelei lea e futua'i ai se taeao fou mo so'o se auunaga a le Mālō auā le lumana'i manuia o Samoa mo nei ma taeao.

I le fa'atupulā'ia o nisi o fa'afitauli i galuega fa'avaitaimi, e ala i le malaga o nisi o lo'o maua galuega lelei i Samoa nei i ia avanoa, avaga o nisi a'o i ai i atunu'u i fafo, o le 'onanā i luga o galuega, o le fananau o nisi o tama'ita'i ae le'i mae'a konekarate, malaga o nisi o lo'o i ai soligātulafono ma isi, o se itu lea na silasila toto'a i ai le Mālō e tatau ona toe iloilo lelei faiga fa'avae ma tulafono o lo'o lima ta'ita'iina ai le filifiliga o e agava'a i nei galuega.

Na tofia ai e le Kapeneta, le Komiti Fa'apitoa latou te tagofia lea matā'upu ma sa'ili uma lape ua alia'e mai a'o a fo'i ni fofō talafeagai e foia ai nei mau fa'afitauli ma lu'itau.

O iinā na faia ai le Fa'ai'uga a le Kapeneta (F.K.) ma fa'ai'ugāfonoina ai le ta'itasi o malaga i masina uma mo Niu Sila ma Ausetalia e auina atu ai o tatou tagata i galuega fa'avaitaimi se'ia

mae'a le su'esu'ega ua fa'agasolo nei.

O i latou fo'i e talosaga, e 'ave uma i le Kapeneta mo lana fa'amaoniga, po'o ai o le a malaga e talafeagai tonu mo nei galuega, o lona uiga, mo le taimi nei, e lē faia e le Pulega ma le Ofisa o le M.C.I.L. se fa'ai'uga e fa'amaonia ai se malaga e alu, aemaise le filifiliga o e tatau ona malaga.

Peita'i o se lape lea i le Matāgaluega, le fa'amaonia o se malaga ma e malaga ai i nai masina ua mavae, e aunoa ma se silafia e le Minisitā fa'apea ai ma le Kapeneta.

O itu ia, na fa'aailoa manino e Leatinu'u, e le'o se fa'aletonu o se to'atasi, ae o le tiute tau'ave o le Vaega atoa o lo'o fitoitonu i ai lea tiute i totonu o le M.C.I.L. sa tatau ona felagolagoma'i ma fautua le isi i le tasi i ala o mea e tatau ona uia, e tusa o le Fa'ai'uga a le Kapeneta ua tu'uina atu.

Saunua Leatinu'u, o le filifiliga o e malaga ma taimi o malaga, e le'o se galuega lenā e tatau ona faia e le Kapeneta, peita'i ona o fa'afitauli ua tutupu mai, o le tulaga pito sili ona amiotonu ma sa'o atoatoa, o le ta'imua ma lotolotoi le Kapeneta i le taimi nei, e mata'itū vala tāua nei, se'ia maua le fa'ai'uga atoa o le lipoti a le Komiti Fa'apitoa e iloa ai le lumana'i o lea auunaga tāua i le atunu'u.

O le fa'anoanoaga o le Minisitā, ona o le solia o le Fa'ai'uga a le Kapeneta ua tu'uina atu, aemaise o lea e tau fofō fa'afitauli ona o fa'aletonu ua va'aia, ae o lo'o molimauina pea le faia e nisi o le

Ofisa o ia gaioga e aunoa ma le usitā'ia o fa'atonuga ua avatu.

I le taimi nei, fa'aailoa e Leatinu'u, ona o le to'atele o nisi o lo'o faigaluega lelei i Samoa nei, ua māua ua malaga i ia galuega fa'avaitaimi, o le ala lea ua se'e ai le Matāgaluega ma le Mālō, so'o se tasi lava e talosaga, e tāpā lava le Fa'alapotopotoga o Fa'aputugātupe mo le Lumana'i Manuia o Tagata Samoa (S.N.P.F.) e fa'amaonia o sea tagata o lo'o totogi pea lana saofaga, o se faiga lea e iloa lelei ai latou e lē tatau ona malaga, ae se'i 'ave le fa'amua i nai o tatou tagata o lo'o sa'ili galuega.

O le tasi o va'ai mamao a le Mālō, mo le filifiliga o e agava'a, o le a tu'uina atu i Ofisa o Fono Fa'avae mo Itumālō ta'itasi, e filifiliga mai ai e o le a talosaga, ma tu'uina mai i le Mālō e ala i le Matāgaluega o Pisinisi, Alāmanuia ma Leipa, o lea auala, e faigofie ai ona toe fe'utaga'i le Mālō ma nu'u ma 'āiga o e o le a malaga, pe a solia e se tasi aiaiga o ia konekarate i atunu'u o le a galulue ai.

Saunua le Minisitā, o tausaga ta'itasi e silia ma le ta'i \$500 miliona le seleni o lo'o fa'ata'avale i lo tatou tamāo'āiga e ala mai i ia galuega fa'avaitaimi, aemaise o 'āiga lima vaivai ua lelei fale e nonofo ai, o ta'avale e feoa'i ai ae fa'apea fo'i i seleni mo mea fai a 'āiga ma pili 'āoga o le fanau, o pine fa'amau tetele ia, e avea ma ta'utinoga ola, i le tāua ma le āoga o lenei auunaga, e ui o lo'o fa'aāoga sesē e nisi.



Galuega fa'avaitaimi i atunu'u i fafo.



Ofisa Fou o le M.W.T.I. i Savai'i

Tusia: Taunuuga Toatasi

Ua mae'a fa'apāia ma tatala aloāia le Ofisa Fou o le Matāgaluega o Galuega Tetele, Fela'uā'iga ma Atina'e 'Ese'ese (M.W.T.I.) i le fogāfale lua o le Maketi i Salelologa, Savai'i.

Mo le silafia, o le 2019 sa mua'i fa'atuina ai le lālā o le Matāgaluega i Salāfai i le nofoaga tonu o lo'o i ai le Ofisa o Pulega o Fela'uā'iga i le Lau'ele'ele (L.T.A.) peita'i ona o le silasila mamao o le Mālō i le faigofie mo feuiā'iga a le mamalu o le atunu'u o lo'o afifio i le Motu Tele, aemaise i talosaga mo pemita mo le fausia o fale, o le ala lea o le fa'atuina o lona Ofisa Fou.

Olenei galuega tele e \$22,249.90 lona tau atoa, ma na fausia lea e le Kamuta fau fale iā Fonoia Siaosi ma lana aufaigaluega.

I le saunoaga autū a le afioga i le Minisitā o le Matāgaluega iā 'Olo Afoa Fiti Va'ai, sa ia fa'ailoa ai le tāua tele o lea Ofisa mo le mamalu o le atunu'u o lo'o aumau i Salāfai i so'o se taimi e mo'omia ai le auauunaga.

"O le fuafuaga ina ia fa'ase'e mai le Ofisa i luga nei o le maketi, ona

ua fai si vā - apiapi o le nofoaga o lo'o i ai i le taimi nei."

E lua Vaega ma'oti o le Matāgaluega o le a 'ave i ai le fa'amuumua mo Savai'i, o le Vaega o le P.U.M.A. e ala i talosaga o maliega tau atina'e (Development Consent Application) ma le Auauunaga e feagai ma talosaga tau pemita mo le fausiaina o fale (Building Permit).

O le fa'atino ai o ia auauunaga a le Matāgaluega i Savai'i, ua fa'ailoa manino ai e le afioga iā 'Olo, o le a i ai lava le aufaigaluega tumau i lona lālā lea, e fa'a'itiitia ai le toe feoa'i mai o le aufaigaluega o lo'o galulue tumau i Upolu.

Saunoa le Minisitā, o se tasi lea o mafua'aga sa faigatā ai ona atoa le auauunaga mo le Puleono, ona o le fetu'unā'iga ma le fa'avasegaina o taimi avanoa mo le aufaigaluega e malaga i Savai'i e galulue ai, aemaise fo'i o le fetu'unā'iga o galuega fa'atino a nei tagata faigaluega pe a tu'ua Upolu mo le auauunaga i Salāfai.

"O lenei faiga fou o le ā mafai ai ona tatala le tatou Ofisa Fou lenei, mai le Aso Gafua i le Aso Faraile i le 9:00 i le taeao se'ia tapunia i le 5:00 i le afiafi."



Tapena le toe tatala o le malae va'alele i Fagali'i

Tusia: Tusiga Taofiga

Ua fa'ailoa manino e le afioga i le Minisitā o le Pulega o Malae Va'alele a Samoa iā 'Olo Afoa Fiti Va'ai ua toe tapena galuega mo le toe tatalaina o faigāmalaga masani a va'alele i Fagali'i mo Samoa e lua.

Ua ta'utino e le Minisitā, o le talosaga lea sa tu'uina mai pea e Amerika Samoa ina ua feiloa'i Ta'ita'i o Mālō e lua, ma folasia manino mai, ina ia toe tatala Fagali'i fa'afaigofie mo faigāmalaga aemaise tulaga tau pisinisi.

O le agaga fo'i lea e tasi o lo'o i le finagalo o le afioga i le Minisitā o le Samoa Airways iā Leatinu'u Wayne So'oialo e vave mo faigāmalaga ma feuiā'iga a le mamalu o le atunu'u aemaise lava o tulaga tau pisinisi.

Fa'ailoa e 'Olo, e leai se tulaga fa'aletonu o i ai le malae va'alele lenei, o tulafono fo'i i le saogālēmū ma le malu puipuia o 'aiga tu lalata ane, e le'o māmā i le va'ai mauāluga a Pulega o Malae Va'alele.

Ae sa fa'ailoa manino e 'Olo, e fa'aaauu pea ona toe tatala lea auauunaga, auā tupe maua ma pisinisi mo le va o Samoa e lua. O le mae'a ai ona toe tapena atoa lea malae va'alele ua mautinoa le lelei atoatoa mo le toe amatalia o lana tautua, ona tu'uina atu fo'i lea o le fautuaga i le Kapeneta mo se aso talafeagai e toe amatalia galuega masani a le malae va'alele i Fagali'i.

O lea malae, ua lē taunu'u ai le malae va'alele sa fuafua e le Faigāmālō ua mavae mo Ti'avea.



Minisitā o le Pulega o Malae Va'alele iā 'Olo Afoa Fiti Va'ai ma le Minisitā o le Kamupani Va'alele a le Samoa Airways iā Leatinu'u Wayne So'oialo.

Fa'afetaia e Tapu'ele'ele ma Vaegā Satupa'itea o latou auala fou

Tusia: Taunuuga Toatasi

E ui i le tulaga pagātia o feagai pea ma le lalolagi ona o uiga fesuisuia'i o le olaga ua tatou ola ai i lenei vaitau, ae le'o taofia ai le silasila mamao o le Faigāmālō a Samoa, i le fa'aleleia atili ma le fa'atupulā'ia o atina'e 'ese'ese e tali ai i manaoga fa'aauau o nai o tatou tagata i lenei vaitau faigatā.

O le isi lea tali fa'aauau a le tatou Mālō e fesoasoani ai i le galueā'ina o le vaomatua i tuā-maota ma tuā-laoa o nu'u ta'itasi, o le fa'atāina ma le fa'aleleia lea o auala galue, e faigofie ai mo feoā'iga a le aufaifa'ato'aga aemaise le aufailafumanu.

Na patipatia ma le agaga fa'afetai e le pāia o afio'aga o Vaegā Satupa'itea ma Tapu'ele'ele, le fa'asoa lima lelei o le Mālō e taua atu i le Pulega o Fela'ua'iga i le Lau'ele'ele (L.T.A.) i le toe fa'aleleia ma le fa'atāina o auala galue ua umusaina.

O le fa'amuumua a le Mālō, ia ogātonugālēmū atina'e e manuia ma saogālēmū ai tagata lautele e ala i auaunaga 'ese'ese e ofoina atu mo Samoa i taimi uma.

Mo le silafia, o le auala fou i Tapu'ele'ele sa feagai lea ma le Konekarate a le F.I.C.O. i lona tau aofa'i e \$895,934.81 a'o le auala i Vaegā Satupa'itea e \$748,897.54 ae sa gafa lea galuega tele ma le Konekarate a le Savai'i Transport Ltd.

O le auala tuai sa i ai i Tapu'ele'ele, e na'o le 1.5 kilomita lona umi peita'i na toe fa'aopoopo i ai le isi 700 mita i le fa'atāina ma atoa ai loa le 2.2 kilomita sa aofia i lenei galuega tele, ae na'o le 4.5 mita lona lautele. A'o Vaegā Satupa'itea, e 1.5 mita lona umi ae 4.5 mita lona lautele.

O ia galuega sa fa'atupe uma i lalo o vaega tupe ua fa'aagaga mo galuega tetele a le Mālō.

I le saunoaga autū a le afioga i le Minisitā o le Matāgaluega Galuega Tetele, Fela'ua'iga ma Atina'e 'Ese'ese a le Mālō ia 'Olo

O le fa'amuumua a le Mālō, ia ogātonugālēmū atina'e e manuia ma saogālēmū ai tagata lautele e ala i auaunaga 'ese'ese e ofoina atu mo Samoa i taimi uma.

Afoa Fiti Va'ai, sa ia momoli ai le fa'amālō ma le fa'afetai i pulega fa'amalumalu a ali'i ma faipule o Tapu'ele'ele ma Vaegā Satupa'itea, i le onosā'ia o lu'itau ma fa'afitauli sa feagai ma latou a'o i fa'agasolo le fausiaina o nei galuega tetele.

O le galuega i Tapu'ele'ele, o le isi lea fuafuaga mamao a le Mālō i le toe fausia o auala simā u'amea, lea fo'i na molimauina i le taeao na fa'apāia ai lea auala galue fou o le afio'aga, le poloka o ta'avale ona ua mamafa timuga ma tetele ai tafega.

"E i ai le vai lea e aga'i mai totonu o Tapu'ele'ele, a tetele timuga, ona lē mafai lea ona sao mai ai se ta'avale.

"O le amataga o le nofoā'iga a le Mālō fou, sa talosaga ai le afio'aga o Vaegā Satupa'itea mo le toe fausia o lona auala galue ona ua fa'aletonu mo femalagā'iga a tagata.

"Fa'afetai i lua afioga i Faipule, ona o le lagalaga i mea lelei e manuia ai nu'u ma itumālō."

Na i ai nisi o talosaga a Tapu'ele'ele ma Vaegā Satupa'itea sa folasia atu mo le silafia e le Minisitā ia 'Olo Afoa Fiti Va'ai ma ua ta'oto atu e taga'i ai le Mālō auā sana fa'ai'uga talafeagai i le lumana'i.



Lautafi Selafi Purcell ma le Afioaga i le Minisitā o le Matāgaluega Galuega Tetele, Fela'ua'iga ma Atina'e 'Ese'ese a le Mālō ia 'Olo Afoa Fiti Va'ai.

Si'itia le auaunaga a le Pulega o Malae Va'alele a Samoa

Tusia: Tusiga Taofiga

E le'o nofonofo le Mālō i le sa'ili pea o ni fesoasoani e fa'aleleia atili ai le auaunaga a le Pulega o Malae Va'alele a le atunu'u auā tagata femalagā'a'i ma le puipuiga lava o o tatou tuāoi fa'avāomālō i le ono sao mai ai o ni oloa e lē fa'atagaina fa'aletulafono.

O le agalelei o le Mālō o Niu Sila, ua fesoasoani ai iā Samoa mo le fa'atupeina o se masini fou fa'aneionapo, mo le faia lea o ID's mo le aufaigaluega galulue i luga o le malae va'alele fa'apea ai le nisi o auaunaga a le Mālō i taimi o taligāmālō.

O le agaga atoa o lea fa'amoemoe a le Mālō ia 'auna ne'i so'ona sopoia e se tasi nofoaga fa'apitoa o lo'o kilia ma fa'ae' ai pasese aemaise o nisi e ono soloia luga o nofoaga fa'apitoa e sese'e mai ai va'alele ma tu'uva'a 'ese atu ai.

Fa'ailoa e le afioga i le Minisitā o le Matāgaluega o Galuega Tetele, Fela'ua'iga ma Atina'e 'Ese'ese iā

'Olo Afoa Fiti Va'ai o ia IDs e lē so'ona fa'aāogaina, o so'o se tasi fo'i mai nisi o Ofisa o le Mālō e tu'uina atu ai nei IDs, e fa'atulaga lava le umi e āoga ai ia IDs, o lona uiga afai e na'o le tasi le itulā sa fa'atagaina mo se galuega e faia i le malae va'alele, e mae'a loa le taimi fa'atulagaina okomeki lava ona uma le āoga o lenā ID sa tu'uina atu i sea tagata.

Ona o aiaiga o faiga fa'avae ma tulafono fa'avāomālō tau va'alele savili, e ao ai ona matuā mata'itū toto'a ia auaunaga ina ia mautinoa le mulimulitā'ia ma amanaia.

O le tasi fo'i o meaalofo faitau miliona ua agalelei ai le Mālō o Niu Sila o lo'o fuafuaina nei, o le masini fa'aata fa'apitoa - CT Scanner e iloa uma ai vaega 'ese'ese o i totonu o ato ma fa'amomoli a so'o se tagata malaga, fa'atasi ai ma vaega po'o ni oloa fo'i o tau'aveina e se tagata malaga.

O le naunautā'iga o le Mālō, o le i ai o sea masini o le a matuā mata'itū toto'a ai tulaga o le ono



Malae Va'alele Fa'avāomālō i Faleolo.

aumai fa'ananā fa'asolitulafono o ni fuālā'au fa'asāina i Samoa po'o ni lā'au malosi fo'i po'o nisi lava oloa e lē fa'atagaina.

O le fa'amoemoe o le Pulega o Malae Va'alele a le atunu'u, ia lē gata na'o le Malae Va'alele

Fa'avāomālō i Faleolo, a ia i ai fo'i se isi masini mo le malae va'alele i Fagali'i ma le Uafu Fa'avāomālō a le atunu'u i Matā'utu - Tai mo va'a e taunu'u mai ma taula i o tatou laufanua mo sina taimi.

O le naunautā'iga o le Mālō e pei

ona fa'ailoa e 'Olo, ina fa'aitiitia fa'afitauli i nei auaunaga tāua ma tineia ai nisi o uiga fa'asolitulafono e ono tutupu mai i le lumana'i ona o oloa e fe'avea'i e tagata femalagā'a'i.



Auala fou mo Tapu'ele'ele ma Vaegā Satupa'itea, Savai'i

Na patipatia ma le agaga fa'afetai e le pāia o afio'aga o Tapu'ele'ele ma Vaegā Satupa'itea le fa'asoa lima lelei o le Mālō tauala atu i le Pulega o Fela'uā'iga i le Lau'ele'ele (L.T.A.) e ala i le fa'atupeina o a la auala galue fou ma le fa'atāina, e fesoasoani tele i le gagauina o le vaomatua auā fa'ato'aga ma lafumanu mo le tausiga o 'āiga, a'o le tautuaina fo'i o ekalesia ma nu'u. *Ata Pu'eina: Taunuuga Toatasi*



