



COVID-19 Situational Report No. 430-436

WEEKLY REPORT

Ministry of Health

Date of report: **September 04, 2022**

Email: surveillance@health.gov.ws

Distribution: **Health Emergency Operations Centre (HEOC)**

Prepared by: **National Health Surveillance & IHR Division**

Tel: **66506/66507**

New information in BLUE

Key Dates:

- **Date Wuhan, China Declared Outbreak:** 31/12/2019
- **Date of Border Control activities commenced:** 22/01/2020 (Travel Advisory and Health screening for incoming passengers)
- **Date COVID-19 declared PHEIC:** 31/01/2020
- **Date Global Pandemic for COVID-19 Declared:** 12/03/2020
- **Samoa Declares State of Emergency for COVID-19:** 21/03/2020
- **Date of first repatriation flight:** 24/03/2020
- **COVID-19 PCR Testing Cartridges Received in Country:** 08/05/2020 (controls received 15/05/2020)
- **Date of First Coronavirus PCR Test Processed Within Country:** 19/05/2020
- **Date of first COVID19 historical case:** 18/11/2020
- **Date of last repatriation flight 2020:** 08/12/2020
- **Date of first repatriation flight 2021:** 22/01/2021
- **Date of first COVID-19 case in Samoa:** 13/02/2021
- **Date first batch of AstraZeneca (AZ) vaccine from COVAX arrived:** 09/04/2021
- **Date of first dose administration of AstraZeneca:** 18/04/2021
- **Date of second dose administration of AZ vaccine:** 14/06/2021
- **Date of 2-day lockdown for COVID-19 vaccination:** 23/09/21 – 24/09/2021
- **Date of first batch of Pfizer vaccine from New Zealand arrived:** 21/10/2021
- **Date of first dose administration of Pfizer:** 22/10/2021
- **Date of Pfizer vaccination roll out in schools for 12-17yrs:** 25/10/2021
- **Date of 1-day national vaccination drive:** 19/11/2021
- **National Lockdown commenced:** 6pm 22/01/22 - 6pm 28/01/22
- **Alert Level 2 commenced:** 6pm 28/01/22 – 6pm 11/02/22
- **Alert Level 1 commenced:** 6pm 11/02/22 – 12am 19/03/22
- **Date of school vaccination roll out for 5-11yrs:** 05/03/22
- **Alert Level 3 lockdown commenced:** 12am 19/03/22 - 6am 06/04/22
- **Alert Level 2 commenced:** 6am 06/04/2022 – 12am 01/06/2022
- **Alert Level 1 commenced:** 12am 01/06/2022
- **Date of last repatriation flight:** 30/06/2022 (Flight origin – New Zealand)
- **Date international borders officially opened:** **01/08/2022**
- **Date of most recent commercial flight:** **03/09/2022** (Flight origin – New Zealand)

SECTION A. SAMOA SITUATION

I. Surveillance update

Reporting period: **August 28 at 2pm – September 04 at 2pm, 2022**

SAMOA COVID-19 SITUATION	Number of cases
Total of new COVID-19 positive cases over the last 7 days (both PCR and rapid antigen test - RAT from all sites*)	50
Cumulative number of COVID-19 positive cases since community transmission detected in March 17, 2022	15,710
Border Surveillance Cumulative number of COVID-19 positive cases detected at the Port of Entry (POE) since November 2020 <u>International POE:</u> <ol style="list-style-type: none"> 1. Faleolo International Airport <ul style="list-style-type: none"> • FJ255 15th August – 1 new case • NZ990 25th August – 2 new cases • NZ998 1st September – 1 new case 2. Matautu Wharf <ul style="list-style-type: none"> • No cases detected 	179

Cumulative number of COVID-19 positive cases (border and community cases)	15,889
COVID-19 admissions Total number of COVID-19 positive cases admitted to TTM Hospital since community transmission in March 17, 2022 – 335 admissions Total number of cases discharged from TTM hospital – 303 discharged home <u>Currently in the last 24hrs:</u> <ul style="list-style-type: none"> • 5 hospital admissions – No ICU patient 	
Total of new COVID-19 related deaths in the last 7 days	0
Cumulative number of COVID-19 related deaths since community transmission detected in March 17, 2022**	29
Rapid antigen testing (RAT) Cumulative number of RATs conducted (as of 16/08/22 at 02:00pm)***	187,397

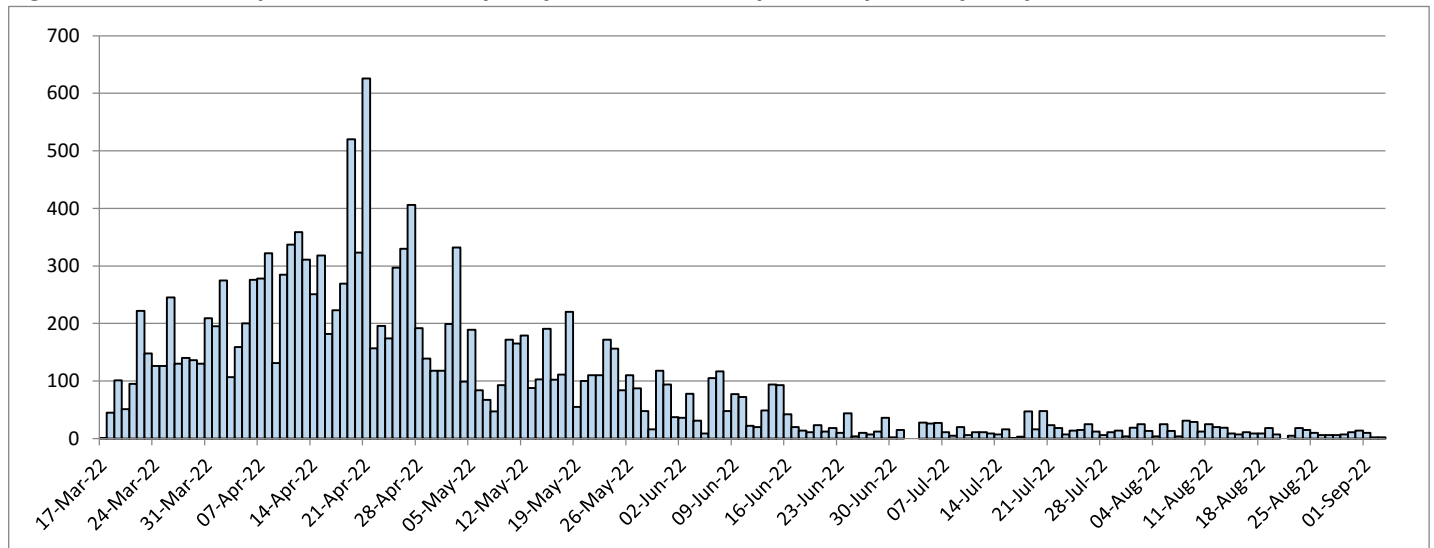
* The sites include all health facilities, private clinics, testing sites and self-reporting

**The death count is subject to change following full verification of all reported COVID-19 deaths from all health facilities.

Note: There are other deaths among registered cases that are not primarily caused by COVID-19.

***The test count is subject to change to data cleaning and when data becomes available

Figure 1. COVID-19 epicurve – New daily confirmed community cases by date of notification



Note: The cut off for daily reporting is 2pm, therefore numbers reporting after 2pm will be reflected in the next reporting periods' count.

Figure 2. Weekly total of community cases vs 7-day rolling average

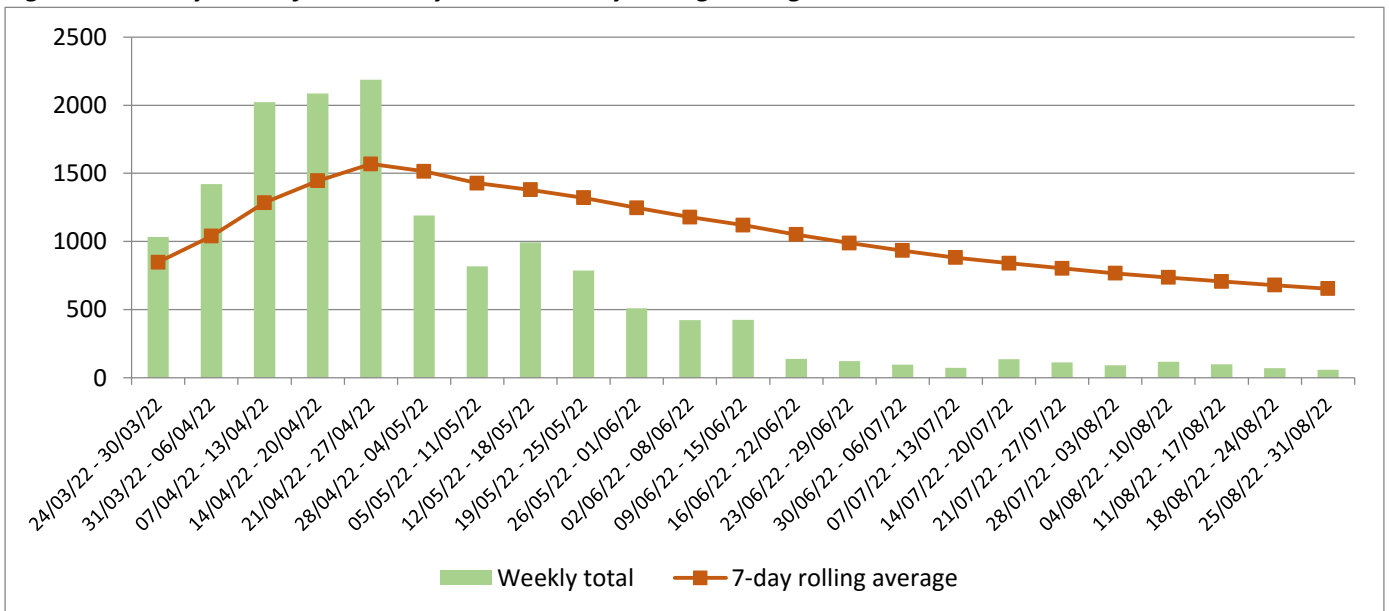
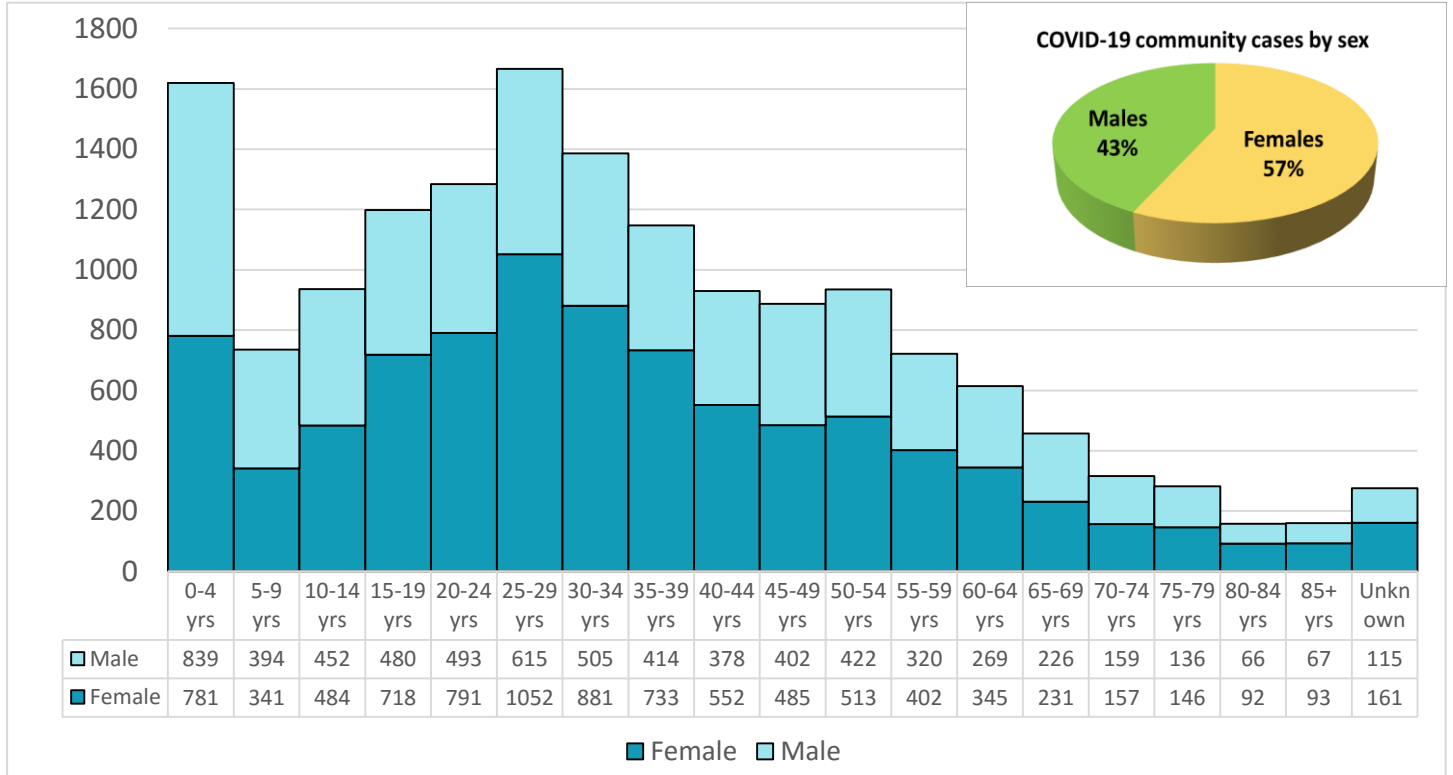


Figure 3. Cumulative community cases since community transmission on March 17, 2022 by age group and sex



Note: Of the total reported community cases, 10.3% are children between 0-4 years and about 1.5% were reported to have been admitted.

Table 1. Cumulative community cases since March 17th by Island of Current Residence

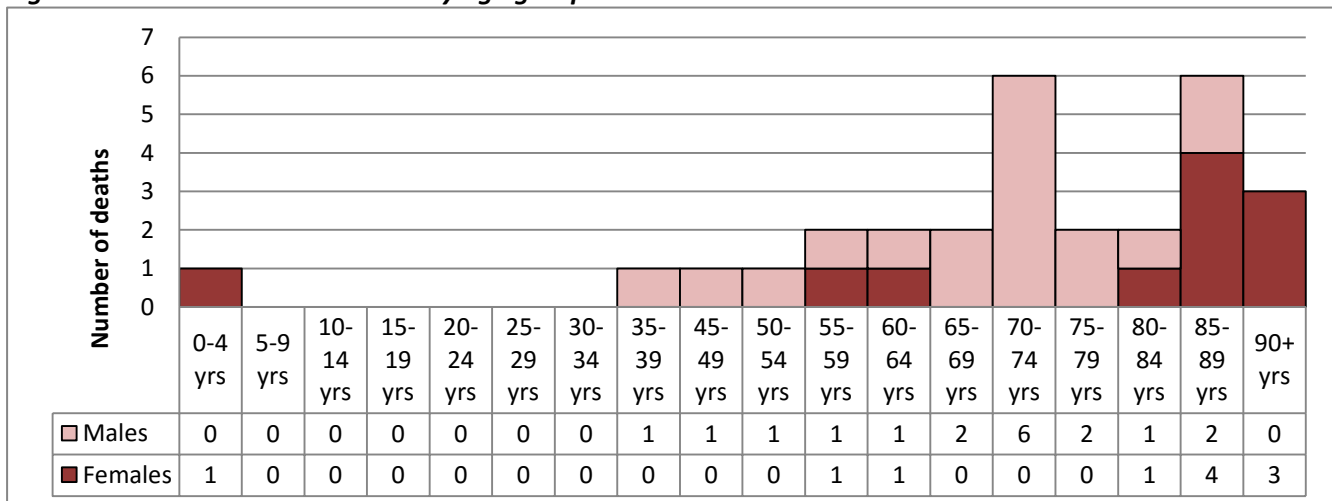
Island	Number of cases	% of cases
Upolu	12,798	81.5%
Savaii	2,894	18.4%
Manono Tai	18	0.1%
TOTAL	15,710	100.0%

Sources of notification of COVID-19 community cases are summarized in Annex A. COVID-19 community cases by districts are summarized in Annex B.

COVID-19 MORTALITY ANALYSIS

Cumulative number of COVID-19 related deaths	29 deaths
Age range	1 yr – 94 yrs
Average age	71 yrs

Figure 4. COVID-19 related deaths by age group and sex



II. COVID-19 vaccination update

As of **08:00am Local Time September 04, 2022**

- AEFI for COVID-19 vaccines continue to be monitored without any major reactions to report.
- First round of booster doses administered to date is **78,349**.
- Second round of booster doses administered to date is **855**.

Table 2. Samoa's COVID-19 vaccination status

Age group	Target Population	FIRST DOSE		SECOND DOSE	
		Number	%	Number	%
18yrs +	121,891	122,285	>99%	114,259	94%
12 – 17 yrs	27,880	28,404	>99%	25,839	93%
5 – 11 yrs*	40,638	40,363	99%	37,358	92%

*The 5-11 year old vaccination roll out commenced on March 05, 2022. The administration of the second dose started on April 04, 2022.

Table 3. Details of donation and supply of COVID-19 vaccines

Date Received	Vaccine Type	Vials	Doses	Supplier/Donated by
9-Apr-21	AstraZeneca	2,400	24,000	COVAX
14-May-21	AstraZeneca	2,880	28,800	COVAX
9-Jul-21	AstraZeneca	1,000	10,000	DFAT AUS
15-Jul-21	AstraZeneca	1,000	10,000	DFAT AUS
26-Jul-21	AstraZeneca	3,000	30,000	DFAT AUS
5-Aug-21	AstraZeneca	2,640	26,400	COVAX
19-Aug-21	AstraZeneca	11,200	112,000	Japan via COVAX
21-Oct-21	Pfizer	3515	17,575	New Zealand
28-Oct-21	Pfizer	1,670	8,350	New Zealand
28-Oct-21	AstraZeneca	2,400	24,000	New Zealand via COVAX
6-Nov-21	Pfizer	1,455	7,275	New Zealand
20-Nov-21	Pfizer	1,670	10,020	New Zealand
27-Nov-21	Pfizer	1,000	6,000	New Zealand
18-Dec-21*	AstraZeneca	270	2,700	DFAT AUS
08-Jan-22	Pfizer	585	3,510	New Zealand
19-Jan-22	AstraZeneca	200	2,000	DFAT AUS
01-Feb-22	AstraZeneca	1,000	10,000	DFAT AUS
05-Feb-22	Pfizer	750	4,500	New Zealand
12-Feb-22	Pfizer	830	5,000	New Zealand
19-Feb-22	Pfizer	420	2,520	New Zealand
26-Feb-22	Pfizer	386	2,320	New Zealand
06-Mar-22	Paediatric Pfizer	3,000	30,000	New Zealand
19-Mar-22	Paediatric Pfizer	1,000	10,000	New Zealand
22-Mar-22	Adult Pfizer	1,620	9,720	New Zealand
30-Mar-22	Adult Pfizer	11,700	70,200	DFAT Australia
09-Apr-22	Paediatric Pfizer	3,000	30,000	New Zealand
24-Apr-22	Adult Pfizer	6,825	40,950	DFAT AUS
01-May-22	Paediatric Pfizer	1,000	10,000	New Zealand
01-May-22	Adult Pfizer	7,605	45,630	US donation via COVAX
06-Jul-22	Paediatric Pfizer	3,000	30,000	New Zealand
Total		79,006	623,380	

*This batch was discarded due to breach of cold chain; exceeded 8°C for more than 24hrs prior to arrival into Samoa

III. Laboratory Update

As of **08:00am Local Time September 02, 2022**

- Total of **3,881 PCR GeneXpert cartridges** for COVID-19 testing were in stock for processing within country.
- COVID tests processed in country is summarized in the tables below.

Table 4. Classification of COVID-19 tests requested

Samples requested for	2020	2021	2022									TOTAL
			Jan	Feb	Mar	Apr	May	Jun	Jul	Aug	Sep	
Persons under investigation	52	35	6	3	230	1,250	793	872	450	251	6	3,948
Immigration	43	3,317	259	77	199	123	636	337	147	134	23	5,295
Isolation ward	-	-	51	133	105	1,524	1,534	2,282	39	77	0	33,421
Quarantined Passengers/staff	5,442	14,794	704	1360	1,804							
RAT confirmation	-	-	-	-	61							
Frontline workers	0	462	1,139	987	923							
Total	5,537	18,608	2,159	2,560	3,322	2,897	2,963	3,491	636	462	29	42,664

Source: Clinical Laboratory, TTM Hospital, MOH

*All people travelling overseas are assessed by the public health doctors for medical clearance and tested for COVID-19 (if required) prior to their travel.

IV. Commercial flights update

As of **02:00pm Local Time September 04, 2022**

1. A commercial flight NZ998 from New Zealand on September 03, 2022 with 172 passengers.
2. A commercial flight FJ852 from Fiji arrived on September 03, 2022 with 51 passengers.
3. A commercial flight FJ853 from Fiji on September 02, 2022 with 168 passengers.
4. A commercial flight NZ998 from New Zealand on September 01, 2022 with 266 passengers.
 - Of the self-reports on Day 3 (September 04, 2022) 1 tested positive, 183 reported negative and 82 did not report.
5. A commercial flight FJ255 from Fiji on August 31, 2022 with 168 passengers.
 - Of the self-reports on Day 3 (September 03, 2022), 119 reported negative and 49 did not report.
6. A commercial flight NZ990 from New Zealand on August 30, 2022 with 144 passengers.
 - Of the self-reports on Day 3 (September 02, 2022), 76 reported negative and 68 did not report.
7. A commercial flight FJ255 from Fiji on August 29, 2022 with 170 passengers.
 - Of the self-reports on Day 3 (September 01, 2022), 102 reported negative and 68 did not report.
8. A commercial flight NZ990 from New Zealand arrived on August 28, 2022 with 177 passengers.
 - Of the self-reports on Day 3 (September 01, 2022), 105 reported negative and 72 did not report.
9. A commercial flight FJ255 from Fiji arrived on August 28, 2022 with 169 passengers.
 - Of the self-reports on Day 3 (August 31, 2022) 130 reported negative and 39 did not report.
10. A commercial flight NZ990 from New Zealand arrived on August 25, 2022 with 270 passengers.
 - Of the self-reports on Day 3 (August 28, 2022), 2 tested positive, 172 reported negative and 96 did not report.
11. A commercial flight FJ255 from Fiji arrived on August 15, 2022 with 159 passengers.
 - Of the self-reports on Day 3 (August 18, 2022), 1 tested positive, 88 reported negative and 70 did not report.

V. Port health update

Reporting period: **August 28 – September 03, 2022**

Port Health clearance summary on the following vessels at the Matautu Wharf and aircrafts at Faleolo International Airport in this reporting period:

- **Vessels**
 - 8 fishing vessels
 - 1 container vessel
 - 1 cargo/passenger vessel
 - 5 yachts
- **International flights**
 - 50 commercial flights
 - 2 Air forces
 - 1 Medevac

Table 5. Matautu Wharf health clearance

Date	Vessel name	ETA	Vessel type	Cre w	PAX	Last port	Remarks
29-Aug-22	Hua Nan Yu 717	0600hrs	Fishing	14	0	Apia	Health Clearance Granted
29-Aug-22	Shun Rong 168	0800hrs	Fishing	18	0	Taiwan	Health Clearance Granted
29-Aug-22	Infinity	1400hrs	Yacht	2	0	Bora Bora, French Polynesia	Health Clearance Granted
29-Aug-22	Merman	1500hrs	Yacht	4	0	Rarotonga	Health Clearance Granted
31-Aug-22	Hai Xing 715	0700hrs	Fishing	12	0	FSM	Health Clearance Granted RAT Swab on arrival
31-Aug-22	Hai Xing 716	0700hrs	Fishing	19	0	Fishing Ground	Health Clearance Granted RAT Swab on arrival
31-Aug-22	Hai Xing 815	0800hrs	Fishing	20	0	Busan Korea	Health Clearance Granted
01-Sep-22	Yuh Chang 2	0600hrs	Fishing	13	0	Apia	Health Clearance Granted RAT Swab on arrival
01-Sep-22	WASTREL	0800hrs	Yacht	2	0	French Polynesia	Health Clearance Granted
02-Sep-22	Yuh Yi 21	0700hrs	Fishing	13	0	Fishing Ground	Health Clearance Granted
02-Sep-22	Leni	0800hrs	yacht	1	0	Bora Bora	Health Clearance Granted RAT Swab on arrival
02-Sep-22	Revision II	0800hrs	yacht	2	0	Bora bora	Health Clearance Granted
02-Sep-22	MV Imua	1500hrs	Container	12	0	Pagopago	Health Clearance Granted
03-Sep-22	Hua Nan Yu 736	0800hrs	Fishing Vessel	16	0	FSM	Health Clearance Granted RAT Swab on arrival
03-Sep-22	MV Lady Naomi	1030hrs	Cargo/ Passenger	18	94	Pagopago	Health Clearance Granted

All 15 vessels complied with Samoa's entry requirements

Table 6. Faleolo International Airport

Date	Aircraft reg.	Flight #	Flight type	ETA	POE	PAX	CREW	Refused entry pax	Remarks
28-Aug-22	ZKNNND	NZ0990	Commercial	1350hrs	AKL	177	7	0	Health Clearance Granted
28-Aug-22	DQFAF	FJ255	Commercial	1610hrs	NAN	169	8	0	Health Clearance Granted 12 RATs
28-Aug-22	5W-FAW	OL219	Commercial	1731hrs	PPG	10	2	0	Health Clearance Granted
29-Aug-22	5W-LOR	TA502	Commercial	0953hrs	PPG	5	1	0	Health Clearance Granted
29-Aug-22	5W-LOR	TA508	Commercial	1152hrs	PPG	8	1	0	Health Clearance Granted
29-Aug-22	5W-LOR	TA512	Commercial	1428hrs	PPG	5	1	0	Health Clearance Granted
29-Aug-22	DQFAE	FJ225	Commercial	1615hrs	NAN	170	7	7	Health Clearance Granted 6 RAT
29-Aug-22	5W-LOR	TA518	Commercial	1630hrs	PPG	9	1	0	Health Clearance Granted
30-Aug-22	5W-FAW	OL291	Commercial	0933hrs	PPG	14	2	0	Health Clearance Granted
30-Aug-22	5W-LOR	TA02	Commercial	0936hrs	PPG	1	1	0	Health Clearance Granted
30-Aug-22	5W-LOR	TA508	Commercial	1130hrs	PPG	6	1	0	Health Clearance Granted
30-Aug-22	5W-FAW	OL219	Commercial	1200hrs	PPG	12	2	0	Health Clearance Granted

30-Aug-22	NZ7571	NGB629	AIRFORCE	1245hrs	When uapai (NZ)	94	12	0	Health Clearance Granted
30-Aug-22	ZKNNG	NZ0990	Commercial	1330hrs	AKL	144	7	0	Health Clearance Granted 4 RAT
30-Aug-22	5W-FAW	OL221	Commercial	1426hrs	PPG	12	2	0	Health Clearance Granted
30-Aug-22	5W-LOR	TA512	Commercial	1427hrs	PPG	4	1	0	Health Clearance Granted
30-Aug-22	ZK JCL		Medivac	1400hrs	Christ church, NZ	nil	5	0	Health Clearance Granted
30-Aug-22	5W-LOR	TA 518	Commercial	1621hrs	PPG	4	1	0	Health Clearance Granted
30-Aug-22	5W-FAW	OL223	Commercial	1705hrs	PPG	9	2	0	Health Clearance Granted
30-Aug-22	VHQPF	QFA0333	Commercial	1750hrs	BNE	292	14	0	Health Clearance Granted
31-Aug-22	5W-FAW	OL221	Commercial	1324hrs	PPG	12	2	0	Health Clearance Granted
31-Aug-22	DQFAH	FJ255	Commercial	1600hrs	NAN	168	7	2	Health Clearance Granted 2 PCR and 3 RAT
31-Aug-22	5W-FAW	OL219	Commercial	1610hrs	PPG	12	2	0	Health Clearance Granted
31-Aug-22	5W-FAW	OL223	Commercial	1822hrs	PPG	2	2	0	Health Clearance Granted
01-Sep-22	5W-LOR	TA502	Commercial	0944hrs	PPG	7	1	0	Health Clearance Granted
01-Sep-22	5W-LOR	TA528	Commercial	1129hrs	PPG	7	1	0	Health Clearance Granted
01-Sep-22	5W-FAW	OL219	Commercial	1158hrs	PPG	14	2	0	Health Clearance Granted
01-Sep-22	ZKNZL	NZ0990	Commercial	1245hrs	AKL	266	15	0	Health Clearance Granted 3RATs
01-Sep-22	5W-FAW	OL221	Commercial	1438hrs	PPG	14	2	0	Health Clearance Granted
01-Sep-22	5W-LOR	TA512	Commercial	1450hrs	PPG	7	1	0	Health Clearance Granted
01-Sep-22	Royal Australian Air Force	A30-003	AIRFORCE	1540hrs	RAAF BASE AMB ERLEY -BNE	0	6	0	Health Clearance Granted
01-Sep-22	5W-LOR	TA512	Commercial	1637hrs	PPG	7	1	0	Health Clearance Granted
01-Sep-22	5W-FAW	OL223	Commercial	1800hrs	PPG	14	2	0	Health Clearance Granted
02-Sep-22	DQFJN	FJ2822	Commercial	0225hrs	NAN	32	10	0	Health Clearance Granted
02-Sep-22	5W-LOR	TA502	Commercial	0932hrs	PPG	7	1	0	Health Clearance Granted
02-Sep-22	5W-LOR	TA508	Commercial	1132hrs	PPG	7	1	0	Health Clearance Granted
02-Sep-22	5W-FAY	OL221	Commercial	1251hrs	PPG	15	2	0	Health Clearance Granted
02-Sep-22	5W-LOR	TA512	Commercial	1443hrs	PPG	10	1	0	Health Clearance Granted
02-Sep-22	5W-LOR	TA518	Commercial	1628hrs	PPG	8	1	0	Health Clearance Granted
02-Sep-22	5W-FAW	OL219	Commercial	1638hrs	PPG	12	2	0	Health Clearance Granted
02-Sep-22	DQFAE	FJ853	Commercial	1640hrs	NAN	168	7	0	Health Clearance Granted
03-Sep-22	DQFAE	FJ852	Commercial	0630hrs	HNL	51	6	0	Health Clearance Granted 1 RAT
03-Sep-22	5W_LOR	TA502	Commercial	0948hrs	PPG	9	1	0	Health Clearance Granted
03-Sep-22	5W-LOR	TA508	Commercial	1145hrs	PPG	7	1	0	Health Clearance Granted
03-Sep-22	5W-FAY	OL219	Commercial	1220hrs	PPG	14	2	0	Health Clearance Granted
03-Sep-22	5W-FAW	OL891	Commercial	1231hrs	PPG	10	2	0	Health Clearance Granted
03-Sep-22	5W-FAY	OL221	Commercial	1442hrs	PPG	13	2	0	Health Clearance Granted
03-Sep-22	5W-LOR	TA512	Commercial	1451hrs	PPG	7	1	0	Health Clearance Granted
03-Sep-22	5W-FAW	OL225	Commercial	1532hrs	PPG	15	2	0	Health Clearance Granted
03-Sep-22	5W-LOR	TA518	Commercial	1633hrs	PPG	6	1	0	Health Clearance Granted
03-Sep-22	5W-FAY	OL223	Commercial	1712hrs	PPG	13	2	0	Health Clearance Granted
03-Sep-22	5W-FAW	OL227	Commercial	1735hrs	PPG	13	2	0	Health Clearance Granted
03-Sep-22	ZKNNB	NZ0998	Commercial	2100hrs	AKL	172	7	0	Health Clearance Granted 5 RATs

All 53 flights complied with Samoa's entry requirements

***A total of nine (9) passengers in this reporting period were denied entry due to failure to provide a negative COVID-19 test result.**

Some passengers were swabbed on arrival either PCR or RAT due to the following reasons:

1. Symptomatic passengers identified during the health screening and public health observations

2. *Passengers that lost the hard copy of their covid test/vaccination card but they have the electronic copy on their phones*
3. *Passengers who have exceeded hours of their covid test due to flight delays*
4. *Passengers who travel from high risk areas, and those with multiple transits*

All passengers tested upon arrival have returned negative results for COVID-19.

VI. Risk communication and community engagement update

- Continue to Disseminate all health information on preventive measures of COVID-19 through Vaccination Sites and media outlets
- Most Calls received at the MOH Call Centre since the 14th April, 2022 were public inquiries on vaccination sites and operations.
- Several issues raised through the media monitoring reports have been addressed by way of public notices, statements and reminders to the public to utilize government websites and Facebook to manage COVID-19 'infodemic' and misinformation.

ANNEX A. COVID-19 community cases by source of notification

Source of notification	Community Cases Notified in the last 7 days (August 28 - September 04, 2022)	Cumulative Community Cases Notified
Private Health Providers		
Others	0	940
Health Facilities		
TTMH	40	5386
Others	0	5258
HEOC Surveillance and Case Finding		
Self report online	3	1009
Call Centre	3	604
Others	0	1481
Workplaces		
Others	0	1032
Total notified	46	15,710

ANNEX B. COVID-19 community cases by district

Weekly COVID-19 District Statistics Report		Confirmed Community Cases (15,710) as of 04/09/2022, Time: 5:00pm	
Geographic Area	Confirmed Community Cases	Population (SBS PHC 2020)	Population Rate per 1,000 Population
Samoa	15,710	215,469	72.9
Upolu	12,812	168,186	76.2
Faleata 1	1,344	14,399	93.3
Vaimauga 4	1,267	7,248	174.8
Vaimauga 3	1,146	11,526	99.4
Faleata 2	944	12,301	76.7
Faleata 3	941	8,867	106.1
Vaimauga 1	682	8,890	76.7
Vaimauga 2	580	5,948	97.5
Sagaga 1	545	8,681	62.8
Anoamaa 2	429	5,336	80.4
Sagaga 2	378	6,914	54.7
Sagaga 3	366	6,191	59.1
Anoamaa 1	329	4,874	67.5
Faleata 4	325	4,827	67.3
Falealili 1	317	3,590	88.3
Sagaga 4	306	6,183	49.5
Aana Alofi 4	296	5,813	50.9
Aleipata Itupa I Lalo	271	4,489	60.4
Safata 1	241	4,151	58.1
Aana Alofi 1	226	4,716	47.9
Lefaga & Faleaseela	224	4,192	53.4
Siumu	215	2,534	84.8
Aiga I le Tai	213	6,154	34.6
Aana Alofi 3	197	3,637	54.2
Falelatai & Samatau	189	3,420	55.3
Safata 2	161	3,121	51.6
Lepa	157	1,482	105.9
Aleipata Itupa I Luga	156	1,383	112.8
Aana Alofi 2	127	2,500	50.8
Vaa O Fonoti	81	1,476	54.9
Falealili 2	81	1,429	56.7
Lotofaga	78	1,914	40.8
Savaii	2,894	47,283	61.2
Palauli 1	303	3,591	84.4
Faasaleleaga 2	250	3,813	65.6
Faasaleleaga 3	207	2,992	69.2
Vaisigano 1	193	2,277	84.8
Faasaleleaga 4	192	3,174	60.5
Vaisigano 2	187	1,717	108.9
Faasaleleaga 1	187	4,138	45.2
Salega 2	138	1,426	96.8

Palauli 3	133	2,503	53.1
Satupaitea	131	2,092	62.6
Gagaifomauga 2	127	2,058	61.7
Alataua Sisifo	126	1,817	69.3
Gagaifomauga 1	125	1,510	82.8
Palauli 2	110	3,420	32.2
Gagaemauga 2	104	1,785	58.3
Salega 1	99	2,177	45.5
Faasaleleaga 5	84	1,657	50.7
Gagaemauga 1	81	2,481	32.6
Gagaifomauga 3	77	1,512	50.9
Falealupo	40	1,143	35.0
(Unknown - no info reported for village or district of case)	4		