



COVID-19 Situational Report No. 437-443

WEEKLY REPORT

Ministry of Health

Date of report: September 11, 2022

Email: surveillance@health.gov.ws

Distribution: Health Emergency Operations Centre (HEOC)

Prepared by: National Health Surveillance & IHR Division

Tel: 66506/66507

New information in BLUE

Key Dates:

- Date Wuhan, China Declared Outbreak: 31/12/2019
- Date of Border Control activities commenced: 22/01/2020 (Travel Advisory and Health screening for incoming passengers)
- Date COVID-19 declared PHEIC: 31/01/2020
- Date Global Pandemic for COVID-19 Declared: 12/03/2020
- Samoa Declares State of Emergency for COVID-19: 21/03/2020
- Date of first repatriation flight: 24/03/2020
- COVID-19 PCR Testing Cartridges Received in Country: 08/05/2020 (controls received 15/05/2020)
- Date of First Coronavirus PCR Test Processed Within Country: 19/05/2020
- Date of first COVID19 historical case: 18/11/2020
- Date of last repatriation flight 2020: 08/12/2020
- Date of first repatriation flight 2021: 22/01/2021
- Date of first COVID-19 case in Samoa: 13/02/2021
- Date first batch of AstraZeneca (AZ) vaccine from COVAX arrived: 09/04/2021
- Date of first dose administration of AstraZeneca: 18/04/2021
- Date of second dose administration of AZ vaccine: 14/06/2021
- Date of 2-day lockdown for COVID-19 vaccination: 23/09/21 – 24/09/2021
- Date of first batch of Pfizer vaccine from New Zealand arrived: 21/10/2021
- Date of first dose administration of Pfizer: 22/10/2021
- Date of Pfizer vaccination roll out in schools for 12-17yrs: 25/10/2021
- Date of 1-day national vaccination drive: 19/11/2021
- National Lockdown commenced: 6pm 22/01/22 - 6pm 28/01/22
- Alert Level 2 commenced: 6pm 28/01/22 – 6pm 11/02/22
- Alert Level 1 commenced: 6pm 11/02/22 – 12am 19/03/22
- Date of school vaccination roll out for 5-11yrs: 05/03/22
- Alert Level 3 lockdown commenced: 12am 19/03/22 - 6am 06/04/22
- Alert Level 2 commenced: 6am 06/04/2022 – 12am 01/06/2022
- Alert Level 1 commenced: 12am 01/06/2022
- Date of last repatriation flight: 30/06/2022 (Flight origin – New Zealand)
- Date international borders officially opened: 01/08/2022
- Date of most recent commercial flight: 10/09/2022 (Flight origin – New Zealand)

SECTION A. SAMOA SITUATION

I. Surveillance update

Reporting period: **September 04 at 2pm – September 11 at 2pm, 2022**

SAMOA COVID-19 SITUATION	Number of cases
Total of new COVID-19 positive cases over the last 7 days (both PCR and rapid antigen test - RAT from all sites*)	36
Cumulative number of COVID-19 positive cases since community transmission detected in March 17, 2022	15,746
Border Surveillance Cumulative number of COVID-19 positive cases detected at the Port of Entry (POE) since November 2020 International POE: <ol style="list-style-type: none"> 1. Faleolo International Airport <ul style="list-style-type: none"> • No cases detected 2. Matautu Wharf <ul style="list-style-type: none"> • No cases detected 	179
Cumulative number of COVID-19 positive cases (border and community cases)	15,925
COVID-19 admissions Total number of COVID-19 positive cases admitted to TTM Hospital since community transmission in	

March 17, 2022 – 345 admissions Total number of cases discharged from TTM hospital – 307 discharged home <u>Currently in the last 24hrs:</u> <ul style="list-style-type: none"> • 3 hospital admissions <ul style="list-style-type: none"> – No ICU patient 	
Total of new COVID-19 related deaths in the last 7 days	0
Cumulative number of COVID-19 related deaths since community transmission detected in March 17, 2022**	29
Rapid antigen testing (RAT) Cumulative number of RATs conducted (as of 16/08/22 at 02:00pm)***	187,397

* The sites include all health facilities, private clinics, testing sites and self-reporting

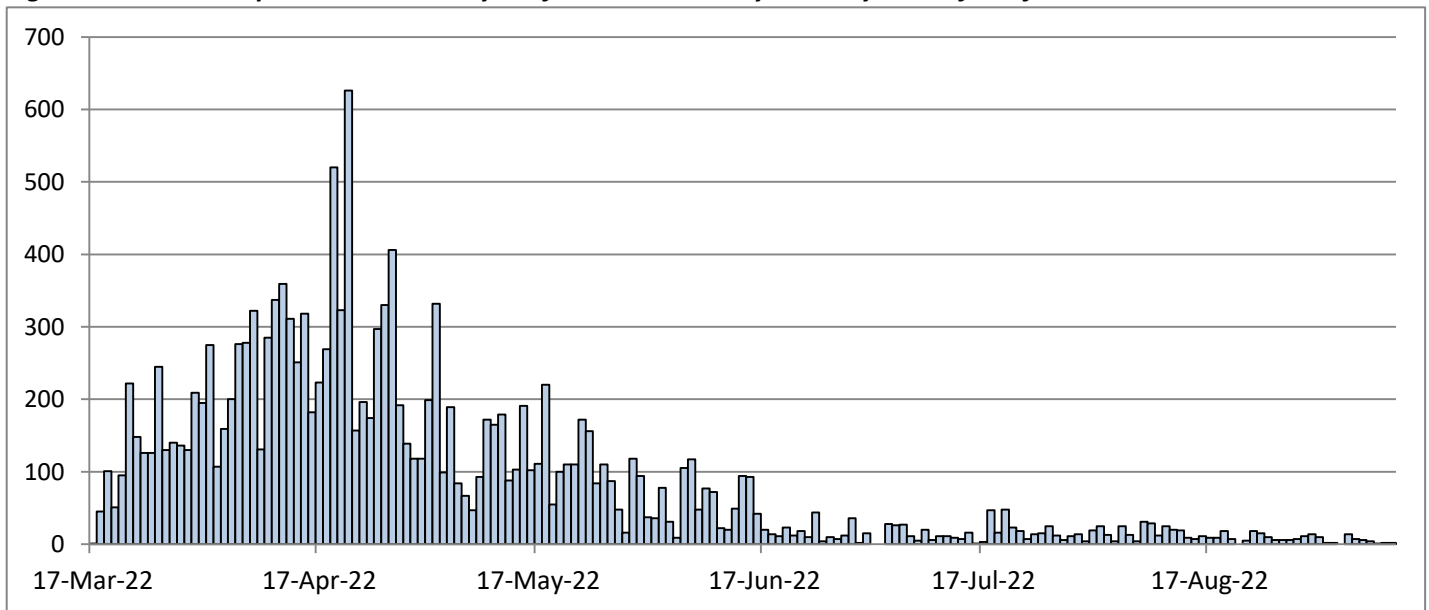
**The death count is subject to change following full verification of all reported COVID-19 deaths from all health facilities.

** Last COVID-19 related death was recorded on June 20, 2022

Note: There are other deaths among registered cases that are not primarily caused by COVID-19.

***The test count is subject to change to data cleaning and when data becomes available

Figure 1. COVID-19 epicurve – New daily confirmed community cases by date of notification



Note: The cut off for daily reporting is 2pm, therefore numbers reporting after 2pm will be reflected in the next reporting periods' count.

Figure 2. Weekly total of community cases vs 7-day rolling average

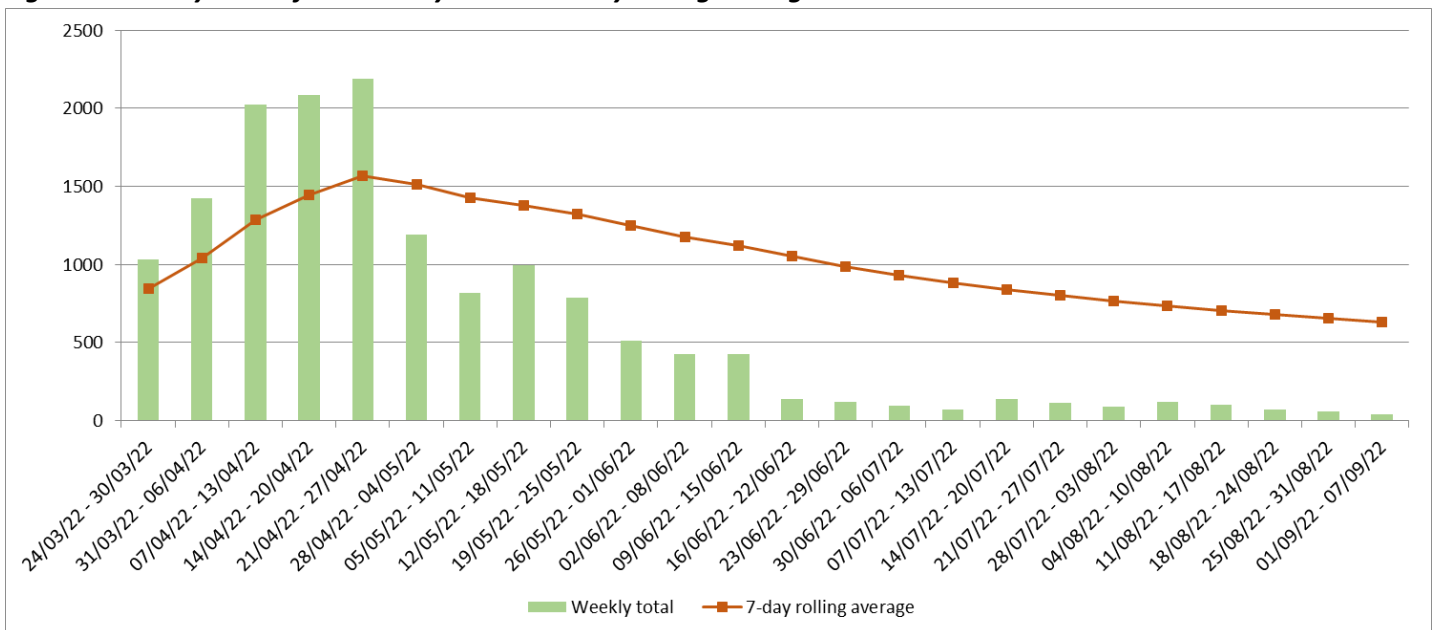
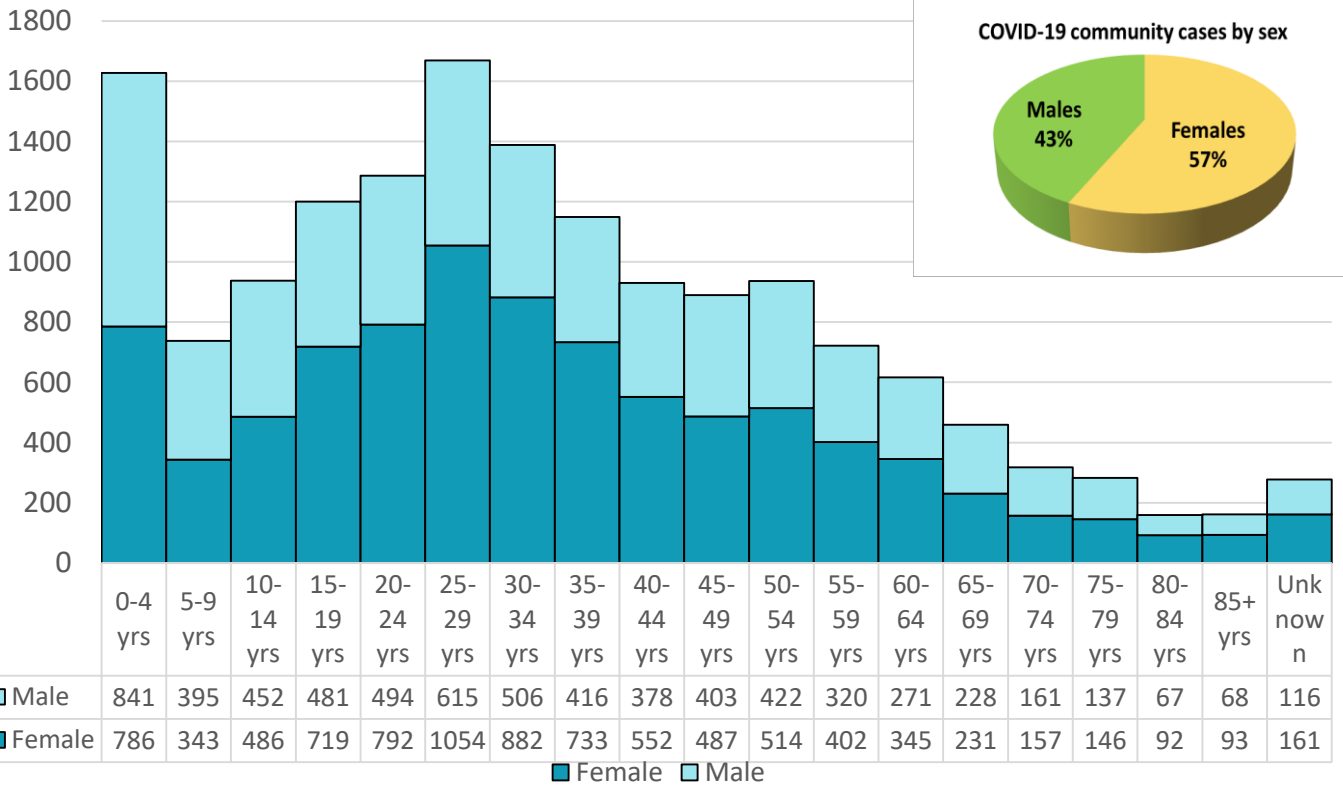


Figure 3. Cumulative community cases since community transmission on March 17, 2022 by age group and sex



Note: Of the total reported community cases, 10.3% are children between 0-4 years and about 1.5% were reported to have been admitted.

Table 1. Cumulative community cases since March 17th by Island of Current Residence

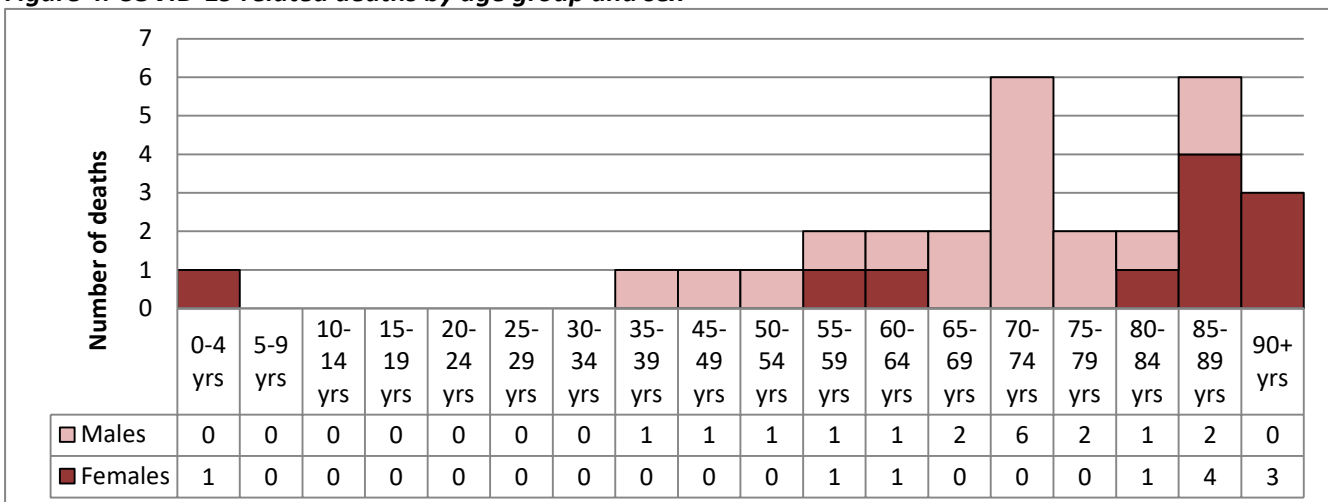
Island	Number of cases	% of cases
Upolu	12,832	81.5%
Savaii	2,896	18.4%
Manono Tai	18	0.1%
TOTAL	15,746	100.0%

Sources of notification of COVID-19 community cases are summarized in Annex A. COVID-19 community cases by districts are summarized in Annex B.

COVID-19 MORTALITY ANALYSIS

Cumulative number of COVID-19 related deaths	29 deaths
Age range	1 yr – 94 yrs
Average age	71 yrs

Figure 4. COVID-19 related deaths by age group and sex



II. COVID-19 vaccination update

As of **08:00am Local Time September 11, 2022**

- AEFI for COVID-19 vaccines continue to be monitored without any major reactions to report.
- First round of booster doses administered to date is **78,510**.
- Second round of booster doses administered to date is **939**.

Table 2. Samoa's COVID-19 vaccination status

Age group	Target Population	FIRST DOSE		SECOND DOSE	
		Number	%	Number	%
18yrs +	121,891	122,290	>99%	114,275	94%
12 – 17 yrs	27,880	28,404	>99%	25,848	93%
5 – 11 yrs*	40,638	40,377	99%	37,366	92%

*The 5-11 year old vaccination roll out commenced on March 05, 2022. The administration of the second dose started on April 04, 2022.

Table 3. Details of donation and supply of COVID-19 vaccines

Date Received	Vaccine Type	Vials	Doses	Supplier/Donated by
9-Apr-21	AstraZeneca	2,400	24,000	COVAX
14-May-21	AstraZeneca	2,880	28,800	COVAX
9-Jul-21	AstraZeneca	1,000	10,000	DFAT AUS
15-Jul-21	AstraZeneca	1,000	10,000	DFAT AUS
26-Jul-21	AstraZeneca	3,000	30,000	DFAT AUS
5-Aug-21	AstraZeneca	2,640	26,400	COVAX
19-Aug-21	AstraZeneca	11,200	112,000	Japan via COVAX
21-Oct-21	Pfizer	3515	17,575	New Zealand
28-Oct-21	Pfizer	1,670	8,350	New Zealand
28-Oct-21	AstraZeneca	2,400	24,000	New Zealand via COVAX
6-Nov-21	Pfizer	1,455	7,275	New Zealand
20-Nov-21	Pfizer	1,670	10,020	New Zealand
27-Nov-21	Pfizer	1,000	6,000	New Zealand
18-Dec-21*	AstraZeneca	270	2,700	DFAT AUS
08-Jan-22	Pfizer	585	3,510	New Zealand
19-Jan-22	AstraZeneca	200	2,000	DFAT AUS
01-Feb-22	AstraZeneca	1,000	10,000	DFAT AUS
05-Feb-22	Pfizer	750	4,500	New Zealand
12-Feb-22	Pfizer	830	5,000	New Zealand
19-Feb-22	Pfizer	420	2,520	New Zealand
26-Feb-22	Pfizer	386	2,320	New Zealand
06-Mar-22	Paediatric Pfizer	3,000	30,000	New Zealand
19-Mar-22	Paediatric Pfizer	1,000	10,000	New Zealand
22-Mar-22	Adult Pfizer	1,620	9,720	New Zealand
30-Mar-22	Adult Pfizer	11,700	70,200	DFAT Australia
09-Apr-22	Paediatric Pfizer	3,000	30,000	New Zealand
24-Apr-22	Adult Pfizer	6,825	40,950	DFAT AUS
01-May-22	Paediatric Pfizer	1,000	10,000	New Zealand
01-May-22	Adult Pfizer	7,605	45,630	US donation via COVAX
06-Jul-22	Paediatric Pfizer	3,000	30,000	New Zealand
08-Sep-22	Paediatric Pfizer	50	500	New Zealand
Total		79,056	623,880	

*This batch was discarded due to breach of cold chain; exceeded 8°C for more than 24hrs prior to arrival into Samoa

III. Laboratory Update

As of **08:00am Local Time September 11, 2022**

- Whole Genome Sequencing results were reported by ESR Lab in New Zealand for the 58 samples sent overseas from recent COVID-19 cases. The majority of the samples from which a genome could be obtained are of the BA.5 subvariant of the Omicron Variant of Concern. This variant is currently the globally dominant lineage of SARS-CoV-2. The sub-variant BA.2 was also identified.
- Total of **3,792 PCR GeneXpert cartridges** for COVID-19 testing were in stock for processing within country.
- COVID tests processed in country is summarized in the tables below.

Table 4. Classification of COVID-19 tests requested

Samples requested for	2020	2021	2022									TOTAL
			Jan	Feb	Mar	Apr	May	Jun	Jul	Aug	Sep	
Persons under investigation	52	35	6	3	230	1,250	793	872	450	251	69	4,011
Immigration	43	3,317	259	77	199	123	636	337	147	134	43	5,315
Isolation ward	-	-	51	133	105	1,524	1,534	2,282	39	77	6	33,427
Quarantined Passengers/staff	5,442	14,794	704	1360	1,804							
RAT confirmation	-	-	-	-	61							
Frontline workers	0	462	1,139	987	923							
Total	5,537	18,608	2,159	2,560	3,322	2,897	2,963	3,491	636	462	118	42,753

Source: Clinical Laboratory, TTM Hospital, MOH

*All people travelling overseas are assessed by the public health doctors for medical clearance and tested for COVID-19 (if required) prior to their travel.

IV. Commercial flights update

As of **02:00pm Local Time September 11, 2022**

1. A commercial flight NZ998 from Fiji on September 10, 2022 with 179 passengers.
2. A commercial flight FJ852 from Fiji on September 10, 2022 with 58 passengers.
3. A commercial flight FJ853 from Fiji on September 09, 2022 with 152 passengers.
4. A commercial flight NZ990 from New Zealand on September 08, 2022 with 276 passengers.
 - Of the self reports on Day 3 (September 11, 2022), 199 reported negative and 77 did not report.
5. A commercial flight FJ255 from Fiji on September 07, 2022 with 176 passengers.
 - Of the self reports on Day 3 (September 10, 2022), 125 reported negative and 51 did not report.
6. A commercial flight QF333 from Australia on September 06, 2022 with 290 passengers.
 - Of the self reports on Day 3 (September 09, 2022), 220 reported negative and 70 did not report.
7. A commercial flight NZ990 from New Zealand on September 06, 2022 with 171 passengers.
 - Of the self reports on Day 3 (September 09, 2022), 133 reported negative and 38 did not report.
8. A commercial flight FJ255 from Fiji on September 05, 2022 with 161 passengers.
 - Of the self reports on Day 3 (September 08, 2022), 123 reported negative and 38 did not report.
9. A commercial flight FJ255 from Fiji on September 04, 2022 with 158 passengers.
 - Of the self reports on Day 3 (September 07, 2022), 99 reported negative and 59 did not report.
10. A commercial flight NZ990 from New Zealand on September 04, 2022 with 183 passengers.
 - Of the self reports on Day 3 (September 07, 2022), 73 reported negative and 110 did not report.

11. A commercial flight NZ998 from New Zealand on September 03, 2022 with 172 passengers.
 - **Of the self reports on Day 3 (September 06, 2022), 58 reported negative and 114 did not report.**
12. A commercial flight FJ852 from Fiji arrived on September 03, 2022 with 51 passengers.
 - **There were no reports received on Day 3 (September 06, 2022).**
13. A commercial flight FJ853 from Fiji on September 02, 2022 with 168 passengers.
 - **Of the self reports on Day 3 (September 05, 2022), 100 reported negative and 68 did not report.**

V. Port health update

Reporting period: **September 04 - 10, 2022**

Port Health clearance summary on the following vessels at the Matautu Wharf and aircrafts at Faleolo International Airport in this reporting period:

- **Vessels**
 - **5 fishing vessels**
 - **3 container vessels**
 - **3 yachts**
 - **2 cargo/passenger vessels**
 - **1 research vessel**
- **International flights**
 - **48 commercial flights**
 - **2 air forces**
 - **1 private**

Table 5. Matautu Wharf health clearance

Date	Vessel name	E.T.A	Vessel type	CREW	PAX	Last port	Remarks
04-Sep-22	LTC Kalopaga	2000hrs	Cargo/ Passenger	13	9	Tokelau	Health Clearance Granted
05-Sep-22	Yuh Yi 16	0600hrs	Fishing	13	0	Apia	Health Clearance Granted
05-Sep-22	Villa Veritas	0800hrs	Yacht	2	0	French Polynesia	Health Clearance Granted
05-Sep-22	Tahnee Mara	0830hrs	Yacht	4	0	French Polynesia	Health Clearance Granted
07-Sep-22	MV Papuan Chief	0600hrs	Container	24	0	Suva	Health Clearance Granted
07-Sep-22	PLAN B	1100hrs	Research	16	3	Tonga	Health Clearance Granted
08-Sep-22	ACUSHNET	0600hrs	Yacht	2	0	French Polynesia	Health Clearance Granted
08-Sep-22	Yuh Fa 88	0800hrs	Fishing	16	0	Taiwan	Health Clearance Granted
08-Sep-22	Huanan Yu 739	1000hrs	Fishing	16	0	FSM	Health Clearance Granted
08-Sep-22	Shen Lian Cheng 885	1200hrs	Fishing	16	0	FSM	Health Clearance Granted
08-Sep-22	MV SSC Fasefulu	2300hrs	Cargo/ Passenger	15	6	Tokelau	Health Clearance Granted
09-Sep-22	Toamoana 16	0700hrs	Fishing	13	0	Fishing Ground	Health Clearance Granted
09-Sep-22	Coral Islander	1800hrs	Container	20	0	Nukualofa, Tonga	Health Clearance Granted
10-Sep-22	Cap Salia	0700hrs	Container	17	0	Papeete	Health Clearance Granted

All 14 vessels complied with Samoa's entry requirements

Table 6. Faleolo International Airport

Date	Aircraft reg.	Flight #	Flight type	E.T.A	P.O.E	PAX	CREW	Denied entry PAX	REMARKS
4-Sep-22	ZKNGG	NZ0990	Commercial	1300hrs	AKL	183	7	0	Health Clearance Granted 1 emergency case
4-Sep-22	DQFAB	FJ255	Commercial	1615hrs	NAN	158	6	1	Health Clearance Granted
5-Sep-22	5W-LOR	TA502	Commercial	0940hrs	PPG	8	1	0	Health Clearance Granted
5-Sep-22	5W-LOR	TA508	Commercial	1143hrs	PPG	7	1	0	Health Clearance Granted
5-Sep-22	DQFAE	FJ255	Commercial	1600hrs	NAN	161	6	2	Health Clearance Granted 1 RAT
5-Sep-22	5W-LOR	TA518	Commercial	1629hrs	PPG	7	1	0	Health Clearance Granted
6-Sep-22	5W-LOR	TA502	Commercial	0918hrs	PPG	7	1	0	Health Clearance Granted
6-Sep-22	5W-LOR	TA508	Commercial	1155hrs	PPG	8	1	0	Health Clearance Granted
6-Sep-22	5W-FAW	OL219	Commercial	1216hrs	PPG	14	2	0	Health Clearance Granted
6-Sep-22	ZKNNC	NZ0990	Commercial	1425hrs	AKL	171	7	0	Health Clearance Granted

									2 RATs on arrival
6-Sep-22	5W-FAW	OL221	Commercial	1429hrs	PPG	15	2	0	Health Clearance Granted
6-Sep-22	5W-LOR	TA512	Commercial	1450hrs	PPG	8	1	0	Health Clearance Granted
6-Sep-22	5W-FAY	OL814	Commercial	1530hrs	PPG	2	2	0	Health Clearance Granted
6-Sep-22	5W-LOR	TA518	Commercial	1634hrs	PPG	7	1	0	Health Clearance Granted
6-Sep-22	5W-FAW	OL223	Commercial	1702hrs	PPG	2	10	0	Health Clearance Granted
6-Sep-22	VHQPB	QFA333	Commercial	1800hrs	BNE	290	14	0	Health Clearance Granted 7 RAT on arriva
7-Sep-22	5W-FAW	OL221	Commercial	108hrs	PPG	14	2	0	Health Clearance Granted All PAX RAT on arrival
7-Sep-22	5W-FAW	OL223	Commercial	1242hrs	PPG	10	2	0	Health Clearance Granted All PAX RAT on arrival
7-Sep-22	5W-FAW	OL224	Commercial	1550hrs	PPG	12	2	0	Health Clearance Granted All PAX RAT on arrival
7-Sep-22	DQFAE	FJ255	Commercial	1600hrs	NAN	176	6	1	Health Clearance Granted 3 RAT
7-Sep-22	NZ4201	NPO 732	AIRFORCE	1800hrs	NAN	0	14	0	Health Clearance Granted
8-Sep-22	5W-LOR	TA502	Commercial	0948hrs	PPG	8	1	0	Health Clearance Granted All PAX RAT on arrival
8-Sep-22	5W-LOR	TA508	Commercial	1139hrs	PPG	8	1	0	Health Clearance Granted All PAX RAT on arrival
8-Sep-22	5W-FAW	OL219	Commercial	1157hrs	PPG	15	2	0	Health Clearance Granted All PAX RAT on arrival
8-Sep-22	ZKNZL	NZ990	Commercial	1245hrs	AKL	276	14	0	Health Clearance Granted
8-Sep-22	NZ7571	NGB629	AIRFORCE	1300hrs	HNL	0	14	0	Health Clearance Granted
8-Sep-22	5W-FAW	OL221	Commercial	1430hrs	PPG	14	2	0	Health Clearance Granted All PAX RAT on arrival
8-Sep-22	5W-LOR	TA-512	Commercial	1437hrs	PPG	8	1	0	Health Clearance Granted All PAX RAT on arrival
8-Sep-22	5W-LOR	TA518	Commercial	1621hrs	PPG	7	1	0	Health Clearance Granted All PAX RAT on arrival
8-Sep-22	5W-FAW	OL223	Commercial	1655hrs	PPG	13	2	0	Health Clearance Granted All PAX RAT on arrival
9-Sep-22	5W-LOR	TA502	Commercial	0932hrs	PPG	8	1	0	Health Clearance Granted All PAX RAT on arrival
9-Sep-22	5W-FAW	OL221	Commercial	1000hrs	PPG	13	2	0	Health Clearance Granted All PAX RAT on arrival
9-Sep-22	5W-LOR	TA508	Commercial	1130hrs	PPG	8	1	0	Health Clearance Granted All PAX RAT on arrival
9-Sep-22	CFGGF	HRT381	Commercial	1220hrs	PHKO-KONA, HONOLULU	3	3	0	Health Clearance Granted
9-Sep-22	5W-FAW	OL223	Commercial	1230hrs	PPG	14	2	0	Health Clearance Granted All PAX RAT on arrival
9-Sep-22	5W-LOR	TA512	Commercial	1421hrs	PPG	7	1	0	Health Clearance Granted All PAX RAT on arrival
9-Sep-22	5W FAY	OL 219	Commercial	1521	PPG	14	2	0	Health Clearance Granted All PAX RAT on arrival
9-Sep-22	5W-LOR	TA518	Commercial	1625hrs	PPG	7	1	0	Health Clearance Granted All PAX RAT on arrival
9-Sep-22	DQFAB	FJ853	Commercial	1710hrs	NAN	152	6	0	Health Clearance Granted
10-Sep-22	DQFAB	FJ852	Commercial	0653hrs	HNL	58	6	5	Health Clearance Granted
10-Sep-22	5W-LOR	TA502	Commercial	0938hrs	PPG	7	1	0	Health Clearance Granted All PAX RAT on arrival
10-Sep-22	5W-LOR	TA508	Commercial	1137hrs	PPG	7	1	0	Health Clearance Granted All PAX RAT on arrival
10-Sep-22	5W-FAY	OL219	Commercial	1145hrs	PPG	14	2	0	Health Clearance Granted All PAX RAT on arrival
10-Sep-22	5W-FAW	OL891	Commercial	1317hrs	PPG	9	2	0	Health Clearance Granted All PAX RAT on arrival
10-Sep-22	5W-FAY	OL221	Commercial	1431hrs	PPG	14	2	0	Health Clearance Granted All PAX RAT on arrival
10-Sep-22	5W-LOR	TA512	Commercial	1440hrs	PPG	7	1	0	Health Clearance Granted All PAX RAT on arrival
10-Sep-22	5W-FAW	OL225	Commercial	1532hrs	PPG	15	2	0	Health Clearance Granted All PAX RAT on arrival

10-Sep-22	5W-LOR	TA512	Commercial	1631hrs	PPG	5	1	0	Health Clearance Granted All PAX RAT on arrival
10-Sep-22	5W-FAY	OL223	Commercial	1707hrs	PPG	15	2	0	Health Clearance Granted All PAX RAT on arrival
10-Sep-22	5W-LOR	TA522	Commercial	1815hrs	PPG	9	1	0	Health Clearance Granted All PAX RAT on arrival
10-Sep-22	ZKNNF	NZ998	Commercial	2048	AKL	179	6	0	Health Clearance Granted 1 RAT/ 3PCR / 1Fined

All 51 flights complied with Samoa's entry requirements

The American Samoa Department of Health released a letter on September 07, 2022 stating that they will no longer conduct COVID-19 tests for travellers to Samoa. Therefore, all inbound travellers from American Samoa are required to conduct a RAT test upon arrival.

***A total of nine (9) passengers in this reporting period were denied entry due to: (1) Failure to provide a negative COVID-19 test result; (2) Failure to complete vaccination 14 days prior to departure to Samoa; and (3) Failure to present a COVID-19 vaccination certificate upon arrival.**

Some passengers were swabbed on arrival either PCR or RAT due to the following reasons:

1. *Symptomatic passengers identified during the health screening and public health observations*
2. *Passengers that lost the hard copy of their covid test/vaccination card but they have the electronic copy on their phones*
3. *Passengers who have exceeded hours of their covid test due to flight delays*
4. *Passengers who travel from high risk areas, and those with multiple transits*

All passengers tested upon arrival have returned negative results for COVID-19.

VI. Risk communication and community engagement update

- Continue to Disseminate all health information on preventive measures of COVID-19 through Vaccination Sites and media outlets
- Most Calls received at the MOH Call Centre since the 14th April, 2022 were public inquiries on vaccination sites and operations.
- Several issues raised through the media monitoring reports have been addressed by way of public notices, statements and reminders to the public to utilize government websites and Facebook to manage COVID-19 'infodemic' and misinformation.

ANNEX A. COVID-19 community cases by source of notification

Source of notification	Community Cases Notified in the last 7 days (September 05 - 11, 2022)	Cumulative Community Cases Notified
Private Health Providers		
Enosa Clinic	3	181
Agape Clinic	2	4
Others	0	760
Health Facilities		
TTMH	28	5414
Others	0	5258
HEOC Surveillance and Case Finding		
Self report online	2	1011
Call Centre	1	605
Others	0	1481
Workplaces		
Others	0	1032
Total notified	36	15,746

ANNEX B. COVID-19 community cases by district

Weekly COVID-19 District Statistics Report		Confirmed Community Cases (15,746) as of 11/09/2022, Time: 5:00pm	
Geographic Area	Confirmed Community Cases	Population (SBS PHC 2020)	Population Rate per 1,000 Population
Samoa	15,746	215,469	73.1
Upolu	12,846	168,186	76.4
Faleata 1	1,348	14,399	93.6
Vaimauga 4	1,267	7,248	174.8
Vaimauga 3	1,153	11,526	100.0
Faleata 2	945	12,301	76.8
Faleata 3	945	8,867	106.6
Vaimauga 1	683	8,890	76.8
Vaimauga 2	583	5,948	98.0
Sagaga 1	549	8,681	63.2
Anoamaa 2	431	5,336	80.8
Sagaga 2	378	6,914	54.7
Sagaga 3	369	6,191	59.6
Anoamaa 1	329	4,874	67.5
Faleata 4	325	4,827	67.3
Falealili 1	317	3,590	88.3
Sagaga 4	306	6,183	49.5
Aana Alofi 4	296	5,813	50.9
Aleipata Itupa I Lalo	271	4,489	60.4
Safata 1	242	4,151	58.3
Aana Alofi 1	226	4,716	47.9
Lefaga & Faleaseela	225	4,192	53.7
Siumu	215	2,534	84.8
Aiga I le Tai	215	6,154	34.9
Aana Alofi 3	197	3,637	54.2
Falelatai & Samatau	189	3,420	55.3
Safata 2	162	3,121	51.9
Lepa	157	1,482	105.9
Aleipata Itupa I Luga	156	1,383	112.8
Aana Alofi 2	127	2,500	50.8
Vaa O Fonoti	81	1,476	54.9
Falealili 2	81	1,429	56.7
Lotofaga	78	1,914	40.8
Savaii	2,896	47,283	61.2
Palauli 1	303	3,591	84.4
Faasaleleaga 2	250	3,813	65.6
Faasaleleaga 3	207	2,992	69.2
Vaisigano 1	193	2,277	84.8
Faasaleleaga 4	192	3,174	60.5
Vaisigano 2	187	1,717	108.9
Faasaleleaga 1	187	4,138	45.2
Salega 2	139	1,426	97.5

Palauli 3	133	2,503	53.1
Satupaitea	131	2,092	62.6
Gagaifomauga 2	127	2,058	61.7
Alataua Sisifo	126	1,817	69.3
Gagaifomauga 1	125	1,510	82.8
Palauli 2	110	3,420	32.2
Gagaemauga 2	105	1,785	58.8
Salega 1	99	2,177	45.5
Faasaleleaga 5	84	1,657	50.7
Gagaemauga 1	81	2,481	32.6
Gagaifomauga 3	77	1,512	50.9
Falealupo	40	1,143	35.0
(Unknown - no info reported for village or district of case)	4		