



Ministry of Health

COVID-19 Situational Report No. 451-457

WEEKLY REPORT

Date of report: **September 25, 2022**

Email: surveillance@health.gov.ws

Distribution: **Health Emergency Operations Centre (HEOC)**

Prepared by: **National Health Surveillance & IHR Division**

Tel: **66506/66507**

New information in BLUE

Key Dates:

- **Date Wuhan, China Declared Outbreak:** 31/12/2019
- **Date of Border Control activities commenced:** 22/01/2020 (Travel Advisory and Health screening for incoming passengers)
- **Date COVID-19 declared PHEIC:** 31/01/2020
- **Date Global Pandemic for COVID-19 Declared:** 12/03/2020
- **Samoa Declares State of Emergency for COVID-19:** 21/03/2020
- **Date of first repatriation flight:** 24/03/2020
- **COVID-19 PCR Testing Cartridges Received in Country:** 08/05/2020 (controls received 15/05/2020)
- **Date of First Coronavirus PCR Test Processed Within Country:** 19/05/2020
- **Date of first COVID19 historical case:** 18/11/2020
- **Date of last repatriation flight 2020:** 08/12/2020
- **Date of first repatriation flight 2021:** 22/01/2021
- **Date of first COVID-19 case in Samoa:** 13/02/2021
- **Date first batch of AstraZeneca (AZ) vaccine from COVAX arrived:** 09/04/2021
- **Date of first dose administration of AstraZeneca:** 18/04/2021
- **Date of second dose administration of AZ vaccine:** 14/06/2021
- **Date of 2-day lockdown for COVID-19 vaccination:** 23/09/21 – 24/09/2021
- **Date of first batch of Pfizer vaccine from New Zealand arrived:** 21/10/2021
- **Date of first dose administration of Pfizer:** 22/10/2021
- **Date of Pfizer vaccination roll out in schools for 12-17yrs:** 25/10/2021
- **Date of 1-day national vaccination drive:** 19/11/2021
- **National Lockdown commenced:** 6pm 22/01/22 - 6pm 28/01/22
- **Alert Level 2 commenced:** 6pm 28/01/22 – 6pm 11/02/22
- **Alert Level 1 commenced:** 6pm 11/02/22 – 12am 19/03/22
- **Date of school vaccination roll out for 5-11yrs:** 05/03/22
- **Alert Level 3 lockdown commenced:** 12am 19/03/22 - 6am 06/04/22
- **Alert Level 2 commenced:** 6am 06/04/2022 – 12am 01/06/2022
- **Alert Level 1 commenced:** 12am 01/06/2022
- **Date of last repatriation flight:** 30/06/2022 (Flight origin – New Zealand)
- **Date international borders officially opened:** 01/08/2022
- **Date travel entry requirements lifted:** **22/09/2022**
- **Date of most recent commercial flight:** **24/09/2022** (Flight origin – New Zealand)

SECTION A. SAMOA SITUATION

I. Surveillance update

Reporting period: **September 18 at 2pm – September 25 at 2pm, 2022**

SAMOA COVID-19 SITUATION	Number of cases
Total of new COVID-19 positive cases over the last 7 days (both PCR and rapid antigen test - RAT from all sites*)	7
Cumulative number of COVID-19 positive cases since community transmission detected in March 17, 2022	15,761
Border Surveillance Cumulative number of COVID-19 positive cases detected at the Port of Entry (POE) since November 2020 <u>International POE:</u> <ol style="list-style-type: none"> 1. Faleolo International Airport <ul style="list-style-type: none"> • No cases detected 2. Matautu Wharf <ul style="list-style-type: none"> • No cases detected 	180
Cumulative number of COVID-19 positive cases (border and community cases)	15,941

COVID-19 admissions

Total number of COVID-19 positive cases admitted to TTM Hospital since community transmission in March 17, 2022 – 347 admissions

Total number of cases discharged from TTM hospital – 312 discharged home

Currently in the last 24hrs:

- No hospital admissions
- No ICU patient

Total of new COVID-19 related deaths in the last 7 days

0

Cumulative number of COVID-19 related deaths since community transmission detected in March 17, 2022**

29

Rapid antigen testing (RAT)

Cumulative number of RATs conducted (as of 16/08/22 at 02:00pm)***

187,397

* The sites include all health facilities, private clinics, testing sites and self-reporting

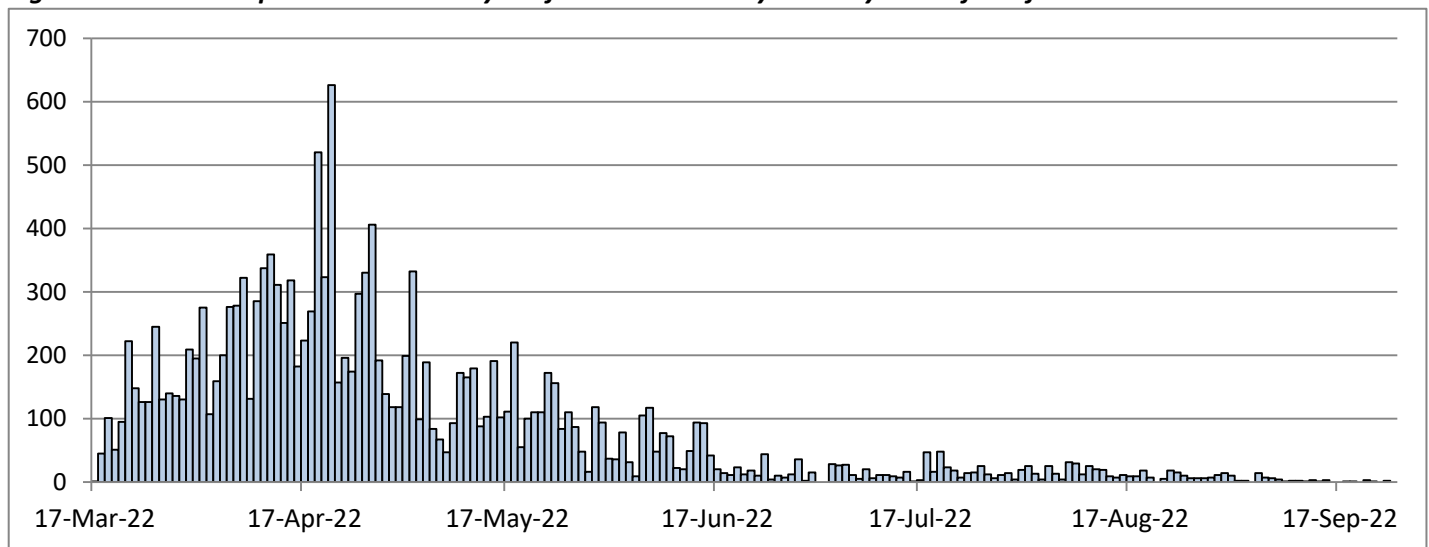
**The death count is subject to change following full verification of all reported COVID-19 deaths from all health facilities.

** Last COVID-19 related death was recorded on June 20, 2022

Note: There are other deaths among registered cases that are not primarily caused by COVID-19.

***The test count is subject to change to data cleaning and when data becomes available

Figure 1. COVID-19 epicurve – New daily confirmed community cases by date of notification



Note: The cut off for daily reporting is 2pm, therefore numbers reporting after 2pm will be reflected in the next reporting periods' count.

Figure 2. Weekly total of community cases vs 7-day rolling average

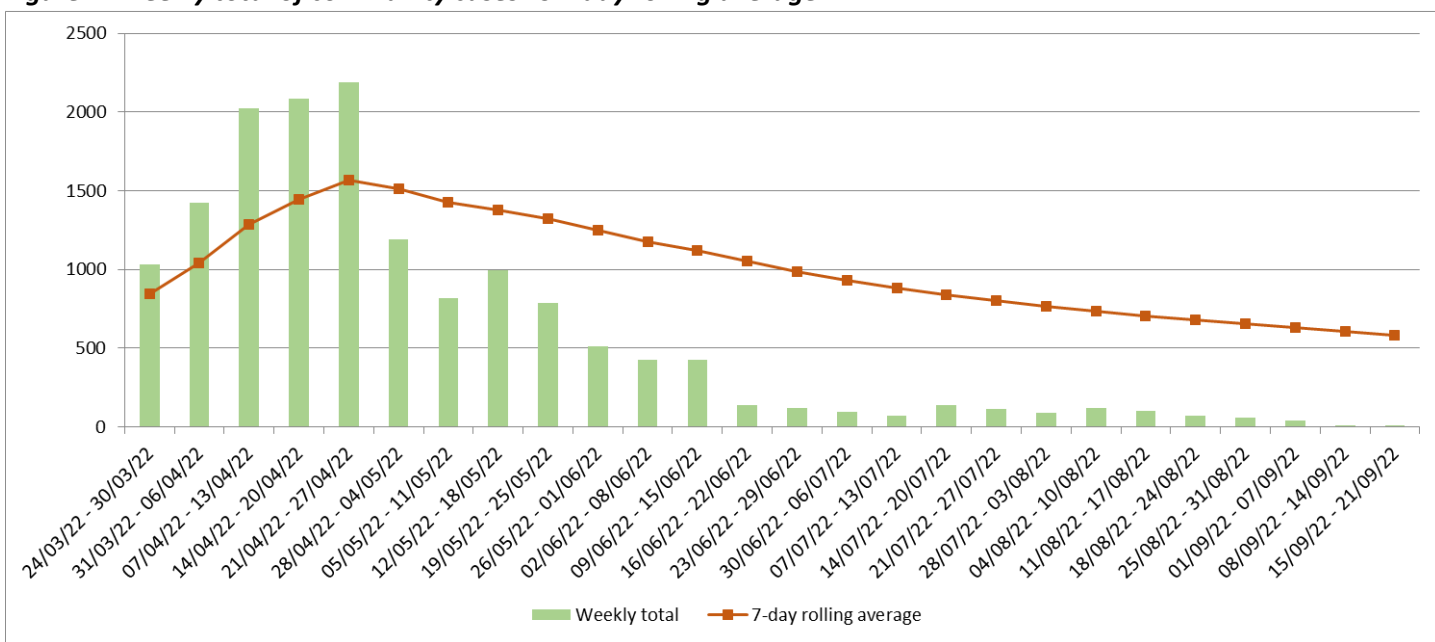
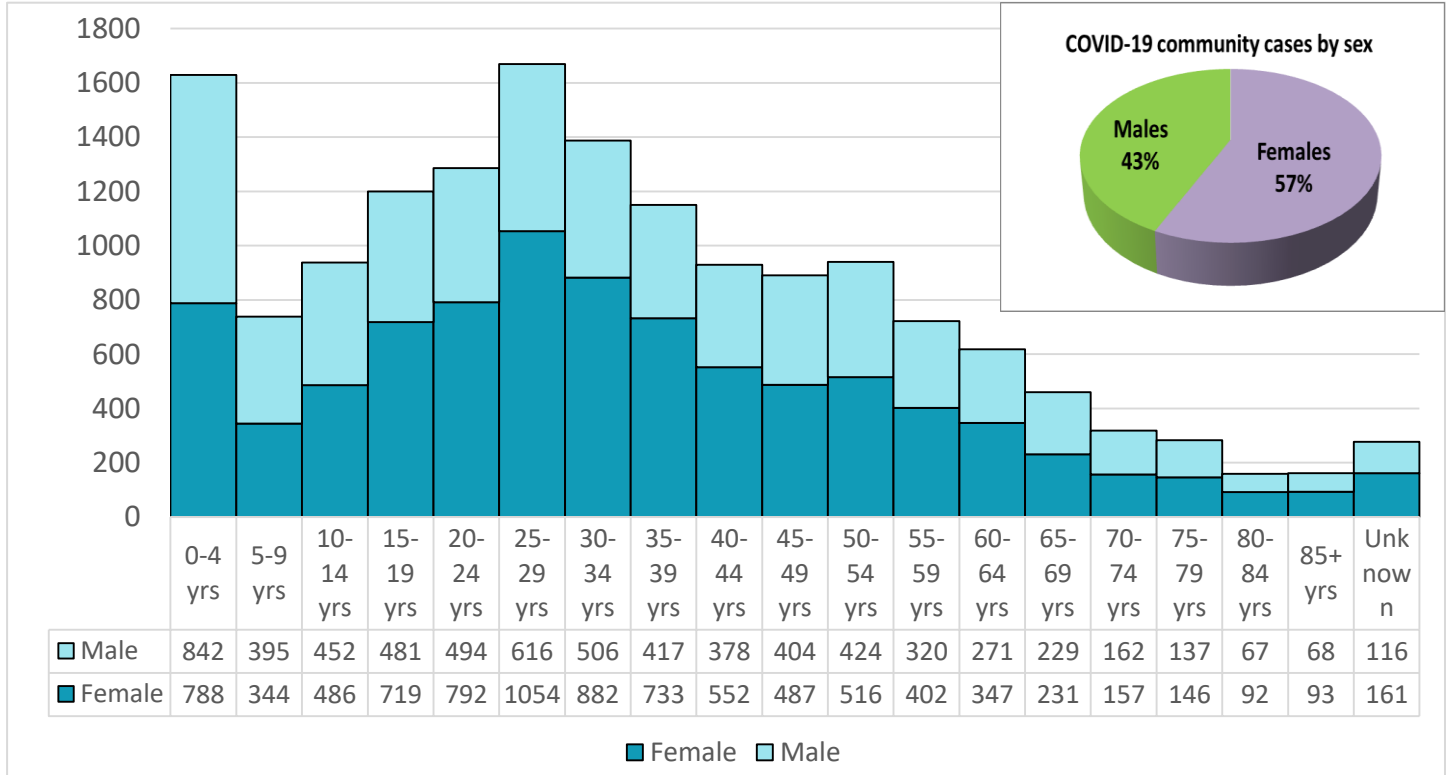


Figure 3. Cumulative community cases since community transmission on March 17, 2022 by age group and sex



Note: Of the total reported community cases, 10.3% are children between 0-4 years and about 1.5% were reported to have been admitted.

Table 1. Cumulative community cases since March 17th by Island of Current Residence

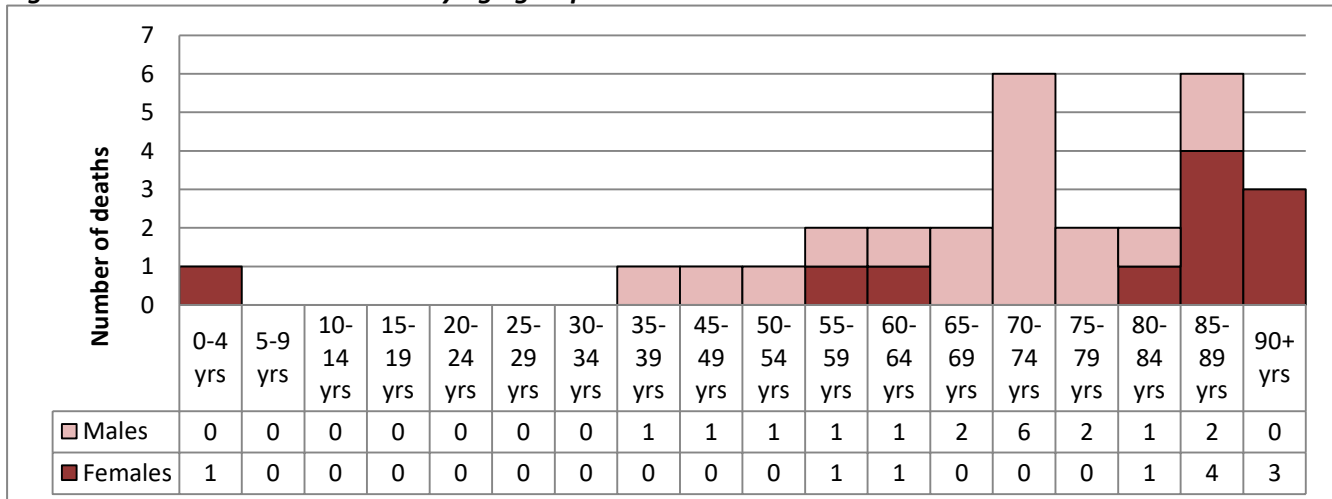
Island	Number of cases	% of cases
Upolu	12,847	81.5%
Savaii	2,896	18.4%
Manono Tai	18	0.1%
TOTAL	15,761	100.0%

Sources of notification of COVID-19 community cases are summarized in Annex A. COVID-19 community cases by districts are summarized in Annex B.

COVID-19 MORTALITY ANALYSIS

Cumulative number of COVID-19 related deaths	29 deaths
Age range	1 yr – 94 yrs
Average age	71 yrs

Figure 4. COVID-19 related deaths by age group and sex



II. COVID-19 vaccination update

As of **08:00am Local Time September 18, 2022**

- AEFI for COVID-19 vaccines continue to be monitored without any major reactions to report.
- First round of booster doses administered to date is **78,675**.
- Second round of booster doses administered to date is **996**.

Table 2. Samoa's COVID-19 vaccination status

Age group	Target Population	FIRST DOSE		SECOND DOSE	
		Number	%	Number	%
18yrs +	121,891	122,295	>99%	114,303	94%
12 – 17 yrs	27,880	28,404	>99%	25,848	93%
5 – 11 yrs*	40,638	40,385	99%	37,370	92%

*The 5-11 year old vaccination roll out commenced on March 05, 2022. The administration of the second dose started on April 04, 2022.

Table 3. Details of donation and supply of COVID-19 vaccines

Date Received	Vaccine Type	Vials	Doses	Supplier/Donated by
9-Apr-21	AstraZeneca	2,400	24,000	COVAX
14-May-21	AstraZeneca	2,880	28,800	COVAX
9-Jul-21	AstraZeneca	1,000	10,000	DFAT AUS
15-Jul-21	AstraZeneca	1,000	10,000	DFAT AUS
26-Jul-21	AstraZeneca	3,000	30,000	DFAT AUS
5-Aug-21	AstraZeneca	2,640	26,400	COVAX
19-Aug-21	AstraZeneca	11,200	112,000	Japan via COVAX
21-Oct-21	Pfizer	3515	17,575	New Zealand
28-Oct-21	Pfizer	1,670	8,350	New Zealand
28-Oct-21	AstraZeneca	2,400	24,000	New Zealand via COVAX
6-Nov-21	Pfizer	1,455	7,275	New Zealand
20-Nov-21	Pfizer	1,670	10,020	New Zealand
27-Nov-21	Pfizer	1,000	6,000	New Zealand
18-Dec-21*	AstraZeneca	270	2,700	DFAT AUS
08-Jan-22	Pfizer	585	3,510	New Zealand
19-Jan-22	AstraZeneca	200	2,000	DFAT AUS
01-Feb-22	AstraZeneca	1,000	10,000	DFAT AUS
05-Feb-22	Pfizer	750	4,500	New Zealand
12-Feb-22	Pfizer	830	5,000	New Zealand
19-Feb-22	Pfizer	420	2,520	New Zealand
26-Feb-22	Pfizer	386	2,320	New Zealand
06-Mar-22	Paediatric Pfizer	3,000	30,000	New Zealand
19-Mar-22	Paediatric Pfizer	1,000	10,000	New Zealand
22-Mar-22	Adult Pfizer	1,620	9,720	New Zealand
30-Mar-22	Adult Pfizer	11,700	70,200	DFAT Australia
09-Apr-22	Paediatric Pfizer	3,000	30,000	New Zealand
24-Apr-22	Adult Pfizer	6,825	40,950	DFAT AUS
01-May-22	Paediatric Pfizer	1,000	10,000	New Zealand
01-May-22	Adult Pfizer	7,605	45,630	US donation via COVAX
06-Jul-22	Paediatric Pfizer	3,000	30,000	New Zealand
08-Sep-22	Paediatric Pfizer	50	500	New Zealand
Total		79,056	623,880	

*This batch was discarded due to breach of cold chain; exceeded 8°C for more than 24hrs prior to arrival into Samoa

III. Laboratory Update

As of **04:00pm Local Time September 21, 2022**

- Total of **3,731 PCR GeneXpert cartridges** for COVID-19 testing were in stock for processing within country.
- COVID tests processed in country is summarized in the tables below.

Table 4. Classification of COVID-19 tests requested

Samples requested for	2020	2021	2022									TOTAL
			Jan	Feb	Mar	Apr	May	Jun	Jul	Aug	Sep	
Persons under investigation	52	35	6	3	230	1,250	793	872	450	251	92	4,034
Immigration	43	3,317	259	77	199	123	636	337	147	134	79	5,351
Isolation ward	-	-	51	133	105	1,524	1,534	2,282	39	77	6	33,427
Quarantined Passengers/staff	5,442	14,794	704	1360	1,804							
RAT confirmation	-	-	-	-	61							
Frontline workers	0	462	1,139	987	923							
Total	5,537	18,608	2,159	2,560	3,322	2,897	2,963	3,491	636	462	177	42,812

Source: Clinical Laboratory, TTM Hospital, MOH

*All people travelling overseas are assessed by the public health doctors for medical clearance and tested for COVID-19 (if required) prior to their travel.

IV. Commercial flights update

As of **02:00pm Local Time September 25, 2022**

1. A commercial flight NZ990 from New Zealand arrived on September 22, 2022 with 297 passengers.
 - Of the self reports on Day 3 (September 25, 2022), 92 reported negative and 205 did not report.
2. A commercial flight FJ255 from Fiji arrived on September 21, 2022 with 171 passengers.
 - Of the self reports on Day 3 (September 24, 2022), 147 reported negative and 24 did not report.
3. A commercial flight QF333 from Australia arrived on September 20, 2022 with 267 passengers.
 - Of the self reports on Day 3 (September 23, 2022), 202 reported negative and 65 did not report.
4. A commercial flight NZ990 from New Zealand arrived on September 20, 2022 with 152 passengers.
 - Of the self reports on Day 3 (September 23, 2022), 134 reported negative and 18 did not report.
5. A commercial flight FJ255 from Fiji arrived on September 19, 2022 with 166 passengers.
 - Of the self reports on Day 3 (September 22, 2022), 135 reported negative and 31 did not report.
6. A commercial flight FJ255 from Fiji arrived on September 18, 2022 with 166 passengers.
 - Of the self reports on Day 3 (September 21, 2022), 128 reported negative and 38 did not report.
7. A commercial flight NZ990 from New Zealand arrived on September 18, 2022 with 165 passengers.
 - Of the self reports on Day 3 (September 21, 2022), 136 reported negative and 29 did not report.
8. A commercial flight NZ998 from New Zealand arrived on September 17, 2022 with 166 passengers.
 - Of the self reports on Day 3 (September 20, 2022), 83 reported negative and 83 did not report.
9. A commercial flight FJ852 from USA arrived on September 17, 2022 with 66 passengers.
 - No self reports were received on Day 3 (September 20, 2022).
10. A commercial flight FJ856 from Fiji arrived on September 16, 2022 with 164 passengers.
 - Of the self reports on Day 3 (September 19, 2022), 114 reported negative and 50 did not report.
11. A commercial flight NZ990 from New Zealand arrived on September 15, 2022 with 274 passengers.
 - Of the self reports on Day 3 (September 18, 2022), 212 reported negative and 62 did not report.

V. Port health update

Reporting period: **September 18 - 24, 2022**

Port Health clearance summary on the following vessels at the Matautu Wharf and aircrafts at Faleolo International Airport in this reporting period:

- **Vessels**
 - **4 yachts**
 - **3 fishing vessels**
 - **3 container vessels**
 - **1 cargo/passenger vessel**
- **International flights**
 - **56 commercial flights**

Table 5. Matautu Wharf health clearance

Date	Vessel name	ETA	Vessel type	CREW	PAX	Last port	Remarks
18-Sep-22	South Islander	0600hrs	Container	20	0	Nukualofa, Tonga	Health Clearance Granted
19-Sep-22	Southern Pearl	0700hrs	Container	18	0	Funafuti	Health Clearance Granted
19-Sep-22	Shen Lian Cheng 882	0800hrs	Fishing	17	0	Palau	Health Clearance Granted
19-Sep-22	Toamoana 12	0900hrs	Fishing	14	0	Apia	Health Clearance Granted
19-Sep-22	Komaru	1000hrs	Yatch	3	0	Pagopago	Health Clearance Granted
19-Sep-22	Aventure	1100hrs	Yatch	4	0	Pagopago	Health Clearance Granted
19-Sep-22	Newfoundland	1200hrs	Yatch	2	0	Bora bora	Health Clearance Granted
19-Sep-22	LTC Kalopaga	1600hrs	Cargo/ Passenger	7	9	Atafu	Health Clearance Granted
21-Sep-22	Emma	0900hrs	Yatch	3	0	French Polynesia	Health Clearance Granted
22-Sep-22	Pacific Islander 2	0600hrs	Container	20	0	Pagopago	Health Clearance Granted
22-Sep-22	Yuh Chang 2	0730hrs	Fishing	14	0	Suva, Fiji	Health Clearance Granted

All 11 vessels complied with Samoa's entry requirements

Table 6. Faleolo International Airport

Date	Aircraft reg.	Airline	Flight #	Flight type	ETA	POE	PAX	CREW	Refused entry pax	Remarks
18-Sep-22	5W-FAY	Samoa Air	OL-219	Commercial	0945hrs	PPG	12	2	0	Health Clearance Granted
18-Sep-22	5W-FAY	Samoa Air	OL221	Commercial	1215hrs	PPG	13	2	1	Health Clearance Granted
18-Sep-22	ZKNND	Air NZ	NZ0990	Commercial	1350hrs	AKL	165	7	2	Health Clearance Granted
18-Sep-22	DQFAB	Fiji Air	FJ255	Commercial	1622hrs	NAN	166	6	0	Health Clearance Granted
18-Sep-22	5W-FAW	Samoa Air	OL223	Commercial	1443hrs	PPG	14	2	0	Health Clearance Granted
18-Sep-22	5W-FAW	Samoa Air	OL225	Commercial	1658hrs	PPG	8	2	0	Health Clearance Granted
19-Sep-22	5W-FAW	Samoa Air	OL891	Commercial	1215hrs	PPG	14	2	0	Health Clearance Granted
19-Sep-22	5W-FAY	Samoa Air	OL219	Commercial	1230hrs	PPG	1	2	0	Health Clearance Granted
19-Sep-22	DQFAD	Fiji Air	FJ255	Commercial	1540hrs	NAN	166	6	0	Health Clearance Granted
19-Sep-22	5W-FAY	Samoa Air	OL221	Commercial	1526hrs	PPG	8	2	0	Health Clearance Granted
19-Sep-22	5W-FAW	Samoa Air	OL893	Commercial	1644hrs	PPG	13	2	0	Health Clearance Granted
19-Sep-22	5W-FAY	Samoa Air	OL223	Commercial	1800hrs	PPG	0	2	0	Health Clearance Granted
19-Sep-22	5W-LOR	Talofa Air	5W-LOR	Commercial	2200hrs	Tarawa, Kiribati	0	2	0	Health Clearance Granted
20-Sep-22	5W-LOR	Talofa Air	TA502	Commercial	1130hrs	PPG	7	1	0	Health Clearance Granted
20-Sep-22	5W-FAY	Samoa Air	OL219	Commercial	1209hrs	PPG	12	2	0	Health Clearance Granted
20-Sep-22	5W-LOR	Talofa Air	TA508	Commercial	1328hrs	PPG	6	1	0	Health Clearance

										Granted
20-Sep-22	ZKNNE	Air NZ	NZ0990	Commercial	1340hrs	AKL	152	7	0	Health Clearance Granted 1 PCR/RAT
20-Sep-22	5W-FAY	Samoa Air	OL221	Commercial	1434hrs	PPG	12	2	0	Health Clearance Granted
20-Sep-22	5W-LOR	Talofa Air	TA518	Commercial	1530hrs	PPG	8	1	0	Health Clearance Granted
20-Sep-22	5W-FAY	Samoa Air	OL2230	Commercial	1704hrs	PPG	13	2	0	Health Clearance Granted
20-Sep-22	5W-LOR	Talofa Air	TA522	Commercial	1730hrs	PPG	6	1	0	Health Clearance Granted
20-Sep-22	VHQPF	Qantas	QFA0333	Commercial	1759hrs	BNE	267	14	0	Health Clearance Granted
21-Sep-22	5W-FAY	Samoa Air	OL219	Commercial	1032hrs	PPG	12	2	0	Health Clearance Granted 2 positive RAT on arrival (isolated at Faleolo Hospital)
21-Sep-22	5W-LOR	Talofa Air	TA502	Commercial	1050hrs	PPG	5	1	0	Health Clearance Granted
21-Sep-22	5W-FAY	Samoa Air	OL223	Commercial	1248hrs	PPG	9	2	0	Health Clearance Granted
21-Sep-22	5W-FAY	Samoa Air	OL225	Commercial	1520hrs	PPG	8	2	0	Health Clearance Granted
21-Sep-22	DQFAF	Fiji Air	FJ255	Commercial	1550hrs	NAN	171	6	0	Health Clearance Granted
21-Sep-22	5W-FAW	Samoa Air	OL221	Commercial	1615hrs	PPG	5	2	0	Health Clearance Granted
22-Sep-22	5W-LOR	Talofa Air	TA502	Commercial	0940hrs	PPG	7	1	0	Health Clearance Granted
22-Sep-22	5W-FAY	Samoa Air	OL891	Commercial	1003hrs	PPG	11	0	0	Health Clearance Granted
22-Sep-22	5W-LOR	Talofa Air	TA508	Commercial	1145hrs	PPG	10	1	0	Health Clearance Granted
22-Sep-22	5W-FAY	Samoa Air	OL219	Commercial	1226hrs	PPG	10	2	0	Health Clearance Granted
22-Sep-22	ZKNZH	Air NZ	NZ0990	Commercial	1330hrs	AKL	297	15	0	Health Clearance Granted
22-Sep-22	5W-LOR	Talofa Air	TA512	Commercial	1430hrs	PPG	7	1	0	Health Clearance Granted
22-Sep-22	5W-FAY	Samoa Air	OL221	Commercial	1440hrs	PPG	14	2	0	Health Clearance Granted
22-Sep-22	5W-LOR	Talofa Air	TA518	Commercial	1625hrs	PPG	4	1	0	Health Clearance Granted
22-Sep-22	5W-FAY	Samoa Air	OL223	Commercial	1700hrs	PPG	10	2	0	Health Clearance Granted
23-Sep-22	5W-LOR	Talofa Air	TA502	Commercial	0942hrs	PPG	8	1	0	Health Clearance Granted
23-Sep-22	5W-FAY	Samoa Air	OL221	Commercial	1002hrs	PPG	7	2	0	Health Clearance Granted
23-Sep-22	5W-LOR	Talofa Air	TA502	Commercial	1135hrs	PPG	7	1	0	Health Clearance Granted
23-Sep-22	5W-FAY	Samoa Air	OL223	Commercial	1155hrs	PPG	8	2	0	Health Clearance Granted
23-Sep-22	5W-LOR	Talofa Air	TA512	Commercial	1432hrs	PPG	3	1	0	Health Clearance Granted
23-Sep-22	5W-FAY	Samoa Air	OL225	Commercial	1507hrs	PPG	4	2	0	Health Clearance Granted
23-Sep-22	5W-FAW	Samoa Air	OL219	Commercial	1608hrs	PPG	9	2	0	Health Clearance Granted
23-Sep-22	5W-LOR	Talofa Air	TA518	Commercial	1643hrs	PPG	9	1	0	Health Clearance Granted
23-Sep-22	DQFAH	Fiji Air	FJ853	Commercial	1700hrs	PPG	172	6	0	Health Clearance Granted

24-Sep-22	DQFAH	Fiji Air	FJ852	Commercial	0615hrs	PPG	73	6	0	Health Clearance Granted
24-Sep-22	5W-FAY	Samoa Air	OL217	Commercial	0928hrs	PPG	11	2	0	Health Clearance Granted
24-Sep-22	5W-LOR	Talofa Air	TA502	Commercial	0947hrs	PPG	8	1	0	Health Clearance Granted
24-Sep-22	5W-LOR	Talofa Air	TA508	Commercial	1140hrs	PPG	8	1	0	Health Clearance Granted
24-Sep-22	5W-FAY	Samoa Air	OL219	Commercial	1208hrs	PPG	12	2	0	Health Clearance Granted
24-Sep-22	5W-FAY	Samoa Air	OL221	Commercial	1428hrs	PPG	12	2	0	Health Clearance Granted
24-Sep-22	5W-LOR	Talofa Air	TA512	Commercial	1435hrs	PPG	7	1	0	Health Clearance Granted
24-Sep-22	5W-LOR	Talofa Air	TA518	Commercial	1628hrs	PPG	7	1	0	Health Clearance Granted
24-Sep-22	5W-FAY	Samoa Air	OL223	Commercial	1717hrs	PPG	12	2	0	Health Clearance Granted
24-Sep-22	ZKNGG	Air NZ	NZ0998	Commercial	1751hrs	AKL	172	7	0	Health Clearance Granted

All 56 flights complied with Samoa's entry requirements

Three (3) passengers in this reporting period were denied entry due to: One (1) passenger presented a positive COVID-19 test result and two (2) passengers failed to provide negative COVID-19 test results on arrival. Moreover, two (2) other passengers presented positive COVID-19 test results on arrival and were placed in isolation at the Faleolo Isolation Site.

Update of Travel Advisory effective on September 22, 2022 as per Cabinet Directive FK(22) 36:

- 1. All travel restrictions for COVID-19 are now lifted**
- 2. All passengers and crew are no longer required to present vaccination cards/certificates or undergo pre-departure testing for COVID-19 before boarding**
- 3. Upon arrival into Samoa:**
 - a) All passengers are strongly advised to wear face masks at all times and continue to take precautionary and preventative measures within the first few days of arrival. Inform any healthcare provider if you feel ill**
 - b) All passengers must truthfully complete the arrival health declaration form in-flight and provide a valid local phone number and email/facebook address**
 - c) Any passenger found to have provided false information is liable to a fine**

VI. Risk communication and community engagement update

- Continue to Disseminate all health information on preventive measures of COVID-19 through Vaccination Sites and media outlets
- Most Calls received at the MOH Call Centre since the 14th April, 2022 were public inquiries on vaccination sites and operations.
- Several issues raised through the media monitoring reports have been addressed by way of public notices, statements and reminders to the public to utilize government websites and Facebook to manage COVID-19 'infodemic' and misinformation.

ANNEX A. COVID-19 community cases by source of notification

Source of notification	Community Cases Notified in the last 7 days (September 19 - 25, 2022)	Cumulative Community Cases Notified
Private Health Providers		
Others	0	945
Health Facilities		
TTMH	7	5428
Others	0	5258
HEOC Surveillance and Case Finding		
Others	0	3098
Workplaces		
Others	0	1032
Total notified	7	15,761

ANNEX B. COVID-19 community cases by district

Weekly COVID-19 District Statistics Report		Confirmed Community Cases (15,761) as of 25/09/2022, Time: 5:00pm	
Geographic Area	Confirmed Community Cases	Population (SBS PHC 2020)	Population Rate per 1,000 Population
Samoa	15,761	215,469	73.1
Upolu	12,861	168,186	76.5
Faleata 1	1,348	14,399	93.6
Vaimauga 4	1,269	7,248	175.1
Vaimauga 3	1,155	11,526	100.2
Faleata 2	948	12,301	77.1
Faleata 3	945	8,867	106.6
Vaimauga 1	685	8,890	77.1
Vaimauga 2	584	5,948	98.2
Sagaga 1	549	8,681	63.2
Anoamaa 2	431	5,336	80.8
Sagaga 2	379	6,914	54.8
Sagaga 3	369	6,191	59.6
Anoamaa 1	329	4,874	67.5
Faleata 4	327	4,827	67.7
Falealili 1	317	3,590	88.3
Sagaga 4	308	6,183	49.8
Aana Alofi 4	296	5,813	50.9
Aleipata Itupa I Lalo	271	4,489	60.4
Safata 1	242	4,151	58.3
Aana Alofi 1	226	4,716	47.9
Lefaga & Faleaseela	225	4,192	53.7
Siumu	215	2,534	84.8
Aiga I le Tai	215	6,154	34.9
Aana Alofi 3	197	3,637	54.2
Falelatai & Samatau	189	3,420	55.3
Safata 2	162	3,121	51.9
Lepa	157	1,482	105.9
Aleipata Itupa I Luga	156	1,383	112.8
Aana Alofi 2	127	2,500	50.8
Vaa O Fonoti	81	1,476	54.9
Falealili 2	81	1,429	56.7
Lotofaga	78	1,914	40.8
Savaii	2,896	47,283	61.2
Palauli 1	303	3,591	84.4
Faasaleleaga 2	250	3,813	65.6
Faasaleleaga 3	207	2,992	69.2
Vaisigano 1	193	2,277	84.8
Faasaleleaga 4	192	3,174	60.5
Vaisigano 2	187	1,717	108.9
Faasaleleaga 1	187	4,138	45.2
Salega 2	139	1,426	97.5

Palauli 3	133	2,503	53.1
Satupaitea	131	2,092	62.6
Gagaifomauga 2	127	2,058	61.7
Alataua Sisifo	126	1,817	69.3
Gagaifomauga 1	125	1,510	82.8
Palauli 2	110	3,420	32.2
Gagaemauga 2	105	1,785	58.8
Salega 1	99	2,177	45.5
Faasaleleaga 5	84	1,657	50.7
Gagaemauga 1	81	2,481	32.6
Gagaifomauga 3	77	1,512	50.9
Falealupo	40	1,143	35.0
(Unknown - no info reported for village or district of case)	4		