

# Savali



**FREE**

Published by the Ministry of the Prime Minister & Cabinet (M.P.M.C.)

## Relief for vulnerable groups- Supplementary Budget 2022 - 2023

By: Nanai Taofiga Laveitiga Tuiletufuga

Inflationary pressures are anticipated in the POST COVID19 recovery period, Finance Minister Mulipola Anarosa Ale Molio'o has indicated in her Supplementary Budget statement presently under Parliament's microscope.

And included in the First Supplementary 2022/2023 of \$13.9 million tala are key policy items aimed at assisting citizens especially the vulnerable groups in dealing with current and anticipated inflationary pressures.

To that effect, the vulnerable groups which are in line to receive financial relief are as follows:

### ADDITIONAL \$150 TOP UP TO THE PENSION BENEFIT

It is intended that this top-up will be disbursed in the last quarter (\$50 per month) of the financial year for the 11,320 recipients of the Government of Samoa's Senior Citizens' Benefit Scheme;

### ADDITIONAL \$100 TOP UP TO THE DISABILITY BENEFIT

There will also be a \$50 top up for the months of April and May in the last quarter of the financial year for the 2,017 recipients of the Government of Samoa's Disability Benefit Scheme.

### SNPF 2% SPECIAL INTERIM DIVIDEND

In addition, the Samoa National Provident Fund will also implement a 2% special interim dividend, for payout on the 23rd of January 2023.

Valued at approximately 19 million tala, this payout will be made available 100% in-cash for all members. This is in addition to the payouts already done in early July and December 2022, within this Financial Year.



Finance Minister Mulipola Anarosa Ale Molio'o

### NEW BUDGET SUPPORT TO COUNTER IMPORTED INFLATION

Government, according to Finance Minister Mulipola has also secured new budget support of over \$44 million tala to counter the "shock of increasing imported inflation and to help reduce the overall budget deficit."

Included also in this First Supplementary Budget 2022/2023 are additional Budget Supports from the Government of Australia and the Asian Development Bank. In addition these resources is a result of Public Finance Management Reforms being implemented by the Government of Samoa and agreed with its development partners. These additional resources have been provided to support targeted measures to counter the shock of increasing imported inflation and to help reduce the overall budget deficit.



## 60 avanoa seila fou mo Samoa

Tusia: Taunuuga Toatasi

I le toe talatala mālie ai o tuāoi fa'avāomālō a Samoa mai le Koviti – 19 i lenā tausaga ua mavae 2022, ua molimauna ai le fa'atupulā'ia pea o avanoa faigaluega mo nai o tatou fanau seila mo va'a meli ma va'a la'u oloa tetele fa'avāomālō.

E 60 avanoa faigaluega fou ua amata tapenapena i ai fanau seila a le atunu'u, e maua ai galuega auā se tupe maua mo le tausiga o 'āiga, tautua o nu'u ma ekalesia.

Saunoa le Fa'atonu Sili Aoao o le Auaunaga o Va'a a Samoa iā Lautimuia Afoa Uelese Va'ai e fa'apea;

"O lo'o malaga lava a tatou seila mo galuega i vaiaso ta'itasi.

"E silia i le 60 seila o lo'o tapena i le taimi nei e malaga 'ese atu mo galuega i totonu o le tolu (3) masina, Ianuari aga'i iā Mati 2023.

"E to'atasi (1) le tama'ita'i seila e malaga ai i le masina fou o Fepuari e galue i luga o le va'a meli.

"Ua maitauina fo'i le si'itia o le tulaga o le fa'atinoga (performance) o galuega aemaise o le amio pulea o tatou fanau a'o feagai ai ma lo latou valā'auina i luga o va'a.

"O lo'o fa'atalanoa i le taimi nei le talosaga mai le Kamupani va'a la'uoloa o le SWIRE i Niu Sila i le naunautā'iga mauālugā, ia 'auna ne'i motusia ia avanoa tāua mo galuega maua a nai a tatou tamafanau.

"I le taimi nei, ua 435 seila Samoa o lo'o galulue mo le Kamupani o le M.S.C. ae 15 i latou o lo'o galulue i le KiwiRail i Niu Sila.

"E to'afā tama'ita'i o lo'o galulue i luga o va'a, ae o lo'o fa'atali avanoa mo le isi to'aono.

"E lē fa'aititia le vi'iga o le Atua ona o avanoa o lo'o maua e a tatou fanau seila e galulue ai i luga o va'a fa'avāomālō i atunu'u i fafo. E lē tau fa'a'ilo fa'amanuia i 'āiga, ekalesia ma si o tatou atunu'u e tauala mai i galuega nei.

"E fa'afetaia fo'i lo tatou Mālō ona o le unā'ia pea o lenei polokalame aemaise le tapuā'iga tatalo a 'āiga ma le aufaigaluega pāia a le Atua."

## Remittances skyrockets to \$300 million neighborhood

By: Nanai Taofiga Laveitiga Tuiletufuga

Remittances for the first three months of the current fiscal year (July-September 2022) came close to the \$300 million tala neighborhood, according to the Remittances Report furnished by the Central Bank of Samoa

The surge of funds send by overseas relatives and families is a welcoming relief for local residents cope with the Post COVID 19 recession beginning to surface evidenced by the increase prices for imported food items and other commodities.

For the period under the 23% increase compared to the same period last year may also be associated to the opening of Samoa's Borders for international travel in August 2022.

According to the Central Bank analysis a \$53.8 million tala increase in funds remitted was recorded during the quarter to end the 3 months with a breathtaking \$287.2 million tala in cash deposited directly into the hands of family members.

Underpinning this expansion were higher transfers from New

Zealand, Australia, United States, American Samoa and others.

During the 3 months funds send from New Zealand totaled \$22.4 million trailed by \$18.4 million from Australia while the United States and American Samoa accounted for \$2.9 million and \$2.4 million tala respectively.

The Central Bank also attributed the increase partially due to the "depreciation of the Samoan tala against the U.S. dollar by 6.6%.

Also on the march upwards during the same period in terms of recipients which included

- Family and Households \$40.5 million tala
- Hand-carried Cash \$15.7 million tala
- Others \$0.7 million tala.

In related developments, the Central Bank also reported that the average monthly cost of sending NZD\$200 to Samoa fell to 7.46% of total funds from 7.8% in October 2021.

Meanwhile the average cost of sending AUD\$200 to Samoa also contracted to 6.74% from 6.82% over the year.

## IT'S TIME TO INVEST THIS JANUARY

ISSUE PRICE 2023 WITHDRAW PRICE

\$ 1.75 \$ 1.73

**Trading Hours:** Monday - Friday  
9am - 4pm

**UNIT TRUST OF SAMOA**

Call Our Office On 26949 / 29916 | Email: info@utos.ws | Visit us on: www.utos.ws



# January SPECIALS

WED 4TH JAN  
TUES 28TH JAN  
2023



**GAS CAST IRON**  
**\$999.00**  
WAS - \$145.00



**GLASS GAS STOVE WITH 2 BURNER**  
**\$169.00**  
WAS - \$210.00

**COOLEX FREEZER 150L**  
**\$790.00**  
WAS - \$1,100.00



**COOLEX FREEZER 500L**  
**\$2,650.00**  
WAS - \$2,850.00



**COOLEX FREEZER 350L**  
**\$1,599.00**  
WAS - \$1,799.00



**SAMSUNG FRIDGE 317L**  
**\$2,350.00**  
WAS - \$2,450.00  
**2 YEAR WARRANTY**



**SAMSUNG FRIDGE 318L**  
**\$2,550.00**  
WAS - \$2,999.00  
**2 YEAR WARRANTY**



**SAMSUNG**  
**SAMSUNG 6.5KG TOP LOAD WASHING MACHINE**  
**\$1,450.00**  
WAS - \$1,899.00  
**2 YEAR WARRANTY**



**SAMSUNG 5.5KG TOP LOAD WASHING MACHINE**  
**\$1,199.00**  
WAS - \$1,299.00  
**2 YEAR WARRANTY**

**GAS OVEN 5 BURNER FS-90S**  
**\$1,750.00**  
WAS - \$1,850.00



**COOLEX GAS OVEN 4 BURNER**  
**\$1,100.00**  
WAS - \$1,250.00



**COOLEX ELECTRIC/GAS OVEN 4-BURNER**  
**\$999.00**  
WAS - \$1,350.00



**CLEANEX WASHING MACHINE 7KG**  
**\$999.00**  
WAS - \$1,300.00



**CLEANEX WASHING MACHINE 10KG**  
**\$1,299.00**  
WAS - \$1,500.00



**WILLZ BAR FRIDGE 125L**  
**\$799.00**  
WAS - \$950.00



**GAS ELECTRIC IGNITION 1 BURNER STOVE**  
**\$399.00**  
WAS - \$550.00



**JUMBUCK BBQ SMOKER WITH OFFSET SIDEBOX (JUMBUCKBBQSMOKER)**  
**\$1,100.00**  
WAS - \$1,199.00



**JUMBUCK 4BURNER FLAT TOP DELTA BBQ**  
**\$999.00**  
WAS - \$1,100.00



**JUMBUCK 2 BURNER BBQ WITH GLASS WINDOW**  
**\$680.00**  
WAS - \$720.00



**JUMBUCK PORTABLE GAS BBQ**  
**\$480.00**  
WAS - \$550.00



**TRAMPOLINE WITH LADDER/SAFETY NET 14FT**  
**\$1,850.00**  
WAS - \$1,950.00



**INTENT TENNIS TABLE**  
**\$1,250.00**  
WAS - \$1,599.00



**TOOLSHED WATER BLASTER 1200 PSI 5.5L MIN TSWB4**  
**\$550.00**  
WAS - \$799.00

**LIVING&CO SHIATSU BACK MASSAGE PILLOW**  
**\$250.00**  
WAS - \$265.00



**LIVING&CO SHIATSU NECK & SHOULDER MASSAGE**  
**\$280.00**  
WAS - \$299.00



# NZ Prime Minister resigns

By: Jasmine Netzler - Iose

New Zealand Prime Minister Jacinda Ardern has tendered her resignation which is expected to go into effect in three days, says an official Government Press Statement.

She is also stepping down as Leader of the Labour Party effective at the appointment of her successor in the next 3 days.

Ardern will however remain the MP for Mt Albert through till April ruling out a by-election before General Election in October 14 this year, as prescribed by New Zealand Election Laws.

According to the information on the Government's website 'a caucus vote to elect a new Party Leader will occur in 3 days' time on Sunday the 22nd of January'.

Ardern is quoted saying that being Prime Minister has been the greatest honour of her life.

She thanked the people of New Zealand for the enormous privilege of leading the country since being elected to the role.

"With holding such a privileged role comes responsibility, including the responsibility to know when you're the right person to lead, and also when you're not."

The Prime Minister and leader of the Labour Party says that she has given the position her 'absolute all' but 'it has taken a lot out of me'.

"You cannot and should not do the job unless you have a full tank, plus a bit in reserve for those unplanned and unexpected challenges that inevitably come along."

And reflecting over the summer Ardern says she no longer has that bit extra in the tank to do the job justice.

She has already taken the matter up with the Governor-General to inform of her decision.



**New Zealand Prime Minister Jacinda Ardern with Prime Minister Fiame Mataafa in Wellington.**

"In addition to our ambitious agenda that has sought to address long term issues like the housing crisis, child poverty and climate change, we also had to respond to a major biosecurity incursion, a domestic terror attack, a volcanic eruption and a one in one-hundred-year global pandemic and ensuing economic crisis," she says.

"The decisions that had to be made have been constant and weighty" but otherwise is proud of the achievements since stepping in to take over the reins."

In respect to her party the PM says the Labour team is incredibly well placed to contest the next election.

"They are the most experienced team in

the country and have shown they have the skills necessary to respond to whatever comes their way."

She made clear however she was not leaving because she doesn't believe they will come back in the next election.

"But I believe Labour can and will win it. We need a fresh set of shoulders for the challenges of both this year and the next three."

In respect to her time in the job Ardern says she hopes to leave New Zealanders with a belief that you can be kind, but strong, empathetic but decisive, optimistic but focused. And that you can be your own kind of leader - one who knows when it's time to go," Jacinda Ardern said.

## 21 flights a week- In excess of 120,000 travelers

By: Nanai Taofiga Laveitiga Tuiletufuga

Since Samoa's borders opened August 2022, in excess of 120,000 travelers have passed in and out of Faleolo International Airport, Samoa Airport Authority's Chief Executive Silimanaia Ueta Jr. Solomona estimates.

The data translates to millions of tala in fresh new revenues injected into the economy on the heels of a year drought in tourism revenues as a result of the Measles Outbreak and COVID19 pandemic.

And since the Borders opened, Faleolo has literally come alive 7 days a week with flights transporting visitors and returning and visiting relatives.

From a minimum of two flights a flight for cargo and repatriation transport, Faleolo Airport is welcoming 21 flights a week.

Since late November 2022, Air NZ have maintained 12 weekly flights from Auckland utilizing a mix of Boeing 787 and Airbus 321.

Fiji Airways have 7 flights a week return to Nadi and 1 service to Honolulu on their Boeing 737 Max aircraft.



Qantas currently operates twice weekly flights to Australia.

And the flights account for 25% of aircraft movement at Faleolo, says Silimanai noting that 2% are private and charter services.

The bulk of 73% of the airport movements' day in and day out is to cater for the inter-island

Samoa route serviced by Samoa Airways and Talofa Airways.

As of press time, negotiations are continuing with Virgin Air on their return although the Australia based airline has indicated March as the target date to prelaunch their partnership with Samoa.

## Close Personal Protection for H.R.P.P. leader

By: Jasmine Netzler - Iose

Former Prime Minister and Incumbent Leader of the Opposition Party, Tuilaepa Dr. Sailele Malielegaoi is under police protection.

But he is free to move around.

The special protection offered by the Ministry of Police and Prisons is prompted from a public incident last week where the former P.M. was physically confronted in public.

Tuilaepa has since declined to file a formal complaint. But it has not prevented police from initiating security and safety measures for former

Government Leaders per standard Police Policy.

Deputy Police Commissioner Papali'i Monalisa Ti'ai-Keti confirmed that an officer from the Ministry was assigned to this task of providing protection to Tuilaepa Sailele Malielegaoi starting early Wednesday morning hours before the Ministry's weekly press conference.

The execution of this service depends on the outcome of a threat assessment by the Ministry to warrant a need and is justified by level of risk associated with person assigned with this protection she said.

Prime Minister Fiame Naomi Mataafa is also provided with Close Personal Protection Officers to ensure her safety.



**EDITOR**

**& PRESS SECRETARY**

Nanai Taofiga Laveitiga

Tuiletufuga

lave.tuiletufuga@mpmc.gov.ws

Tel: (685) 24-799 ext 747

**SUB EDITOR ENGLISH**

Jasmine Netzler - Iose

jasmine.iose@mpmc.gov.ws

**SUB EDITOR SAMOAN**

Tusiga Peseta Taofiga

tusiga.taofiga@mpmc.gov.ws

**PRINCIPAL LAYOUT ARTIST**

Elisapeta Palepoi - Asiata

Te: 26398 ext. 786

**PRINCIPAL PRODUCTION UNIT**

Joshua Lafoa'i

joshua.lafoai@mpmc.gov.ws

**PRINCIPAL COMMUNICATION OFFICER**

Eirenei Ariu Toleafoa

eirenei.ariu@mpmc.gov.ws

**SENIOR REPORTERS**

Taunuuga Toatasi

taunuuga.toatasi@mpmc.gov.ws

Marc Membrere

marc.membrere@mpmc.gov.ws

**SENIOR COMMUNICATION OFFICER**

Leaosa Faaifo Faaifo

faaifo.faaifo@mpmc.gov.ws

**SENIOR PRODUCTION UNIT**

Vaitogi A. Matafeoa

asuisui.matafeoa@mpmc.gov.ws

**SENIOR MARKETING**

Vala Dora Samoa

dora.samoa@mpmc.gov.ws

**MARKETING OFFICER**

Litia Taateo Aviata

litia.taateo@mpmc.gov.ws

**ADMINISTRATION OFFICER**

Tuusa'o Iose

**Contact:**

Ph: 26398 or 63222

savalinews2020@gmail.com

Level 4, FMFMII

Government Building

Eleele Fou

**Published by:**

The Ministry of the

Prime Minister & Cabinet,

FMFM II Government Building.

**Printed by:**

Samoa Observer Ltd.

# PSC Chairman clarifies vacancies "freeze"

By: Marc Membrere

Chairman of the Public Service Commission Nonu Lemauga Saleimoa Vaai has clarified the merits supporting the PSC's decision to suspend hiring Officers to Principals level citing a way forward for the Government's working force as the main reason.

Nonu was responding to questions raised by the Savali Newspaper in relation to the issue that has prompted concerns from Members of Parliament in this week's proceedings.

The matter first came to light in an announcement on the official Public Service Commission circular dated 23 December 2023.

"In accordance with the Public Service Commission's circular memorandum #17 of 16 December 2022, the advertisement of permanent vacancies (from Officer to Principal level) listed below is cancelled until further notice."

He said the review is in line with the Government's Workforce plan guidelines for a Workforce plan forecast.

"All Ministries under the PSC are being reviewed to assess the existing skills and the skills needed for the government's work."

But explained there were no issues with the commission's recruitment and selection processes.

It was included in the review however for improvement purposes such as to boost Public Service efficiencies in all respects including service, smart management and best practices.

The review however does not affect State Owned Enterprises (SOEs), he further added.

The Ministry of Police, Prisons, and Corrections advertised 40 Constable positions and 15 Corrections Officers on the 23 December



Chairman of the Public Service Commission Nonu Lemauga Saleimoa Vaai

circular. Savali Newspaper in its Friday 13 January 2023 edition quoted in its story titled 'Police keeps vigil on more recruitment' by Marc Membrere, Police Commissioner Auapaa Logoitino Filipino as having reached out to PSC if his Ministry was affected by the hold off of advertisement of permanent positions as stated in that circular.

Nonu explained that the Ministry of Police, Prisons and Corrections Services is independent and are not under the PSC.

The Ministry performs its own selection and recruitment processes and is executed under its Human Resource Division.



Ministry of Police, Prisons and Corrections Services weekly Press Conference



Laufo Meti Building now location for Traffic Division of the Ministry of Police, Prisons and Corrections Services

## Traffic Division relocates from Fagalii to Matautu

By: Jasmine Netzler-Iose

The Traffic Division is re-located to the Laufo Compound at Matautu from the Fagalii Airport as of Monday this week, Deputy Police Commissioner Papali'i Monalisa Tiai-Keti told a Press Conference the weekend.

The relocation is part of the Government's plan to reopen Fagalii Airport for inter-island

travel between the two Samoas. When the Airport will resume operations is not determined.

In related developments, Papalii also announced that licensing and registration of vehicles and driver's licenses has also been returned to the Land Transport Authority.

The relocation is on a temporary basis until a permanent fixture is secured.



SPECIAL ADVERTISEMENT

CHIEF EXECUTIVE OFFICER

SAMOA HOUSING CORPORATION

Applications are invited from interested qualified candidates for the above-mentioned position.

**Salary:** Commensurate with the Salary Package for CEO's of Government Ministries and Public Bodies.

**Duration of Contract:** A term of three (3) years.

**Application Package:** Detailed information are included in the Application Package which can be uplifted from the Ministry for Public Enterprises ('MPE') or downloaded from the MPE website [www.mpe.gov.ws](http://www.mpe.gov.ws).

Applications must be marked "Confidential – Application for CHIEF EXECUTIVE OFFICER, SAMOA HOUSING CORPORATION"

**and addressed to:**  
The Chairman  
Board of Director  
Samoa Housing Corporation  
Apia, Samoa

**and delivered to MPE Office**  
Level 1, NPF Plaza  
Tel 34500  
Beach Road, Apia

**Closing Date & Submission of Applications:**

Completed applications should be received by the Ministry for Public Enterprises, Level 1, NPF Plaza Building on or before **Friday, 27<sup>th</sup> January 2023, by 4.00 p.m.**

It is important to note that ALL applications received after the time and date stated in the advertisement **WILL NOT** be accepted and considered during the short listing process.

Applications can be submitted via email [cam.wendt@mpe.gov.ws](mailto:cam.wendt@mpe.gov.ws). A hard copy of an electronically submitted application received after the due date may be accepted given the electronic copy was received on time.

For more information, please contact the Assistant Chief Executive Officer (Public Bodies Governance Division) Manu'a Dr. Cam Wendt of the Ministry for Public Enterprises on phone 34500 ext 206 or email [cam.wendt@mpe.gov.ws](mailto:cam.wendt@mpe.gov.ws).



Sakaria Faaiuso was involved in a rescue mission that saved the lives of 24 Cuban nationals Photo: Sakaria Faaiuso/Facebook

# SSS Chief praises acts of Samoan sailor

By: Marc Membrere

Sakaria Faaiuso is a hero.

A Samoan sailor working onboard the MSC Meraviglia, Sakaria played a leading role in the rescue operation which saved the lives of 24 Cuban nationals.

And his heroic actions are not going unnoticed by his boss and General-Manager of the Samoa Shipping Services (S.S.S.) Lautimuia Afoa Vaai.

In an email responding to questions from the Savali Newspaper, Lautimuia sang Sakarias' praises.

"It is heartening to hear from the reports of the Samoan sailors, some of the sailors of the crew were the first to carry out this rescue operation, and all their lives were saved.

The S.S.S. Chief stated that such actions reflect the dedicated service of Samoan sailors serving on international shipping companies.

And rescue work is a must for any sailor, whenever lives are endangered at sea or on ships.

"Our sailors are also well prepared for this type of rescue work - the necessary knowledge and experience, especially physical strength," he says.

"Praise be to God for the successful completion of the rescue work that our sailors had to deal with and all those who performed the rescue work are safe."

Lautimuia says that being a sailor isn't an easy profession as your life is on the line and you are at risk all the time while out on the ocean.

He says that safety is priority, not only the ships but the lives of all passengers onboard.

"It is a calling that requires good mental training, a fit and healthy body, a brave heart, and mostly relying on God's protective power to execute the work."

**Customs Services**  
Ph: +685 21561 (Matautu)  
Ph: +685 51574 (Savaii)  
PO Box 44, Apia  
info service@revenue.gov.ws



**Inland Revenue Services**  
Ph: +685 20411 (Apia)  
Ph: +685 51574 (Savaii)  
PO Box 877, Apia  
www.revenue.gov.ws

## IMPORTANT NOTICE 2023 RENEWAL OF CUSTOMS LICENSES

1. CUSTOMS CONTROLLED AREAS (CCA)
2. CUSTOMS BROKER OR AGENT

We wish to kindly remind ALL holders of the above listed Customs Licenses, that all your 2022 licenses will expire on 31<sup>st</sup> December 2022.

Please visit our office in Matautu to ensure that your licenses are renewed before 31<sup>st</sup> January 2023. You are required to renew all your licenses before the expiry date pursuant to Section 15 of the Customs Act 2014 for all CCA licenses and Section 319 for Customs broker licenses.

Failure to renew by the due date will result in additional penalty and / or revocation of license.

For more information please contact – Atitala Gauta or Eseta Vaifale Afaaso on telephone 21561 or email [agauta@revenue.gov.ws](mailto:agauta@revenue.gov.ws) / [evaifale@revenue.gov.ws](mailto:evaifale@revenue.gov.ws)

Ma le fa'aaloalo lava,

Fonoti Talaitupu Li'a Taefu

**ACTING CHIEF EXECUTIVE OFFICER/COMPTROLLER OF CUSTOMS**

# More cruise ships to arrive in Samoa

By: Marc Membrere

Good news for the start of this year for Samoa and especially local businesses.

The Samoa Ports Authority (SPA) has confirmed that there will be 6 cruise ships scheduled to visit Samoa with hundreds of visitors and tourists. And it starts today and more to come throughout February.

That was a positive update revealed by the General Manager of the SPA Soalo Kuresa Soalo in his response to questions emailed to him by the Savali Newspaper on Tuesday morning.

The Authority also expects to receive more cruise ships after February he added.

"Beyond February there are 9 other cruise ships confirmed for 2023 and 10 confirmations for 2024."

Samoa welcomed its first cruise ship MS Westerdam, Holland America

Line owned, in October after it officially opened its borders in August last year.

Her arrival brought in 1392 passengers from over 35 different nationalities, and were welcomed by a colourful array of entertainment hosted by the Samoa Tourism Authority, other local organisations and associations and stalls on the wharf packed with a variety of Samoan handicrafts on sale.

The January and February schedule for cruise ships to dock at Matautu Wharf;

- Celebrity Eclipse 20th January
- Arcadia 8th February
- Amadea 14th February
- MSC Poesia (Maiden) 18th February
- Queen Victoria 19th February
- Amera 20th February



Minister of Agriculture and Fisheries Laauli Leuatea Polataivao Fosi

## Why 10 Electoral Constituencies Axed from the \$1 million: La'auli

By: Marc Membrere

10 Electoral Constituencies have had their funding from the Governments' \$1 million tala Development Project suspended for breach of guidelines, Cabinet Minister and member of the current Administration's \$1 million project Steering Committee La'auli Leuatea Polataivao Fosi has revealed.

Speaking to the media over the weekend, La'auli cited the unauthorized distribution of the \$200,000 initial allocation. The funds were to build fund infrastructure and hire personnel as well as cover operational costs. But La'auli says in some constituencies the funds were distributed as payment in advance for property leases where the District Centers will be housed.

This said the Cabinet Minister contradicts the spending allocation of the \$200,000.

For instance, \$132,000 is to fund the construction of the center, \$32,000 for operational (electricity and water bill) costs and the balance of \$32,000 for the wages of staff and allowances of Committee Members.

Once that is completed, the constituency is required to submit three reports which are:

- Financial statements on the use of the initial \$200,000 and a Letter from the Auditor
- 4 Year District development Plan
- A Report on how the \$1 million will be utilised

The disbursement of the \$1 million is not all at once, the first lot will be \$150,000 to be utilised for operational costs at the District Development Center.

This leaves \$850,000, and the first half of this amount will be distributed to kick-off the projects, with the remaining half to be distributed before the end of the financial year.

La'auli further added that the steering committee will continue with the project plans while it conducts a review on the suspended 10 constituencies.

### Customs Services

Ph: +685 21561 (Matautu)  
Ph: +685 51574 (Savaii)  
PO Box 44, Apia  
info service@revenue.gov.ws



### Inland Revenue Services

Ph: +685 20411 (Apia)  
Ph: +685 51574 (Savaii)  
PO Box 877, Apia  
www.revenue.gov.ws

## FAASILASILAGA TAUA

### FA'AFUINA O LAISENE MO AUAUNAGA FAALE-OFISA O TIUTE - 2023.

1. LAISENE MO CCAs
2. LAISENE MO CUSTOMS BROKER

Mo i latou uma o lo o umia laisene e pei ona faailoa atu i luga, e faailoa ma faamanatu atu o le a faamuta nei i le aso 31 Tesema 2022 le aoga o lau laisene mo lenei tausaga 2022.

Ua tata nei ona e susi ma agai mai i le matou ofisa i Matautu e talosagaina le fa'afou ai o lau laisene a'o lei tuanai le aso 31 Ianuari 2023 e pei ona aiaia i lalo o le Tulafono o Tiute 2014, Vaega 3, parakarafa 15 ma le Vaega 18, parakarafa 319 o le tulafono o Tiute 2014.

O lou le usitaia o lenei faasilasilaga i le mae'a ai o le aso 31 Ianuari 2023, o le a faae'e ai loa se faasalaga tupe e faaopoopo i luga o le tofogi o lau laisene poo le fa'alêaogaina foi o lau laisene.

Mo nisi fa'amatalaga, fa'amolemole fa'afesootai mai Atitala Gauta po o Eseta Vaifale Afaaso i le telefoni 21561 poo le emeli: [agauta@revenue.gov.ws](mailto:agauta@revenue.gov.ws)/[evaifale@revenue.gov.ws](mailto:evaifale@revenue.gov.ws)

Ma lou fa'aaloalo lava.

  
Fonoti Palaitupu Li'a-Taefu  
**SUI OFISA SILI O PULEGA.**

# Faleata 4 opens District Development Center

By: Marc Membrere

The Faleata 4 constituency is one step closer to fulfilling requirements for the Government's \$1 million project following the official opening of its District Development Center last Saturday.

Located at Toamua, the official opening was attended by the Minister of Finance Mulipola Anarosa Ale Molioo, Minister of Agriculture Fisheries La'auli Leuatea Polataivao Fosi, Member Parliament of the Faleata No. 4 constituency Ale Vena Ale, and members of the constituency.

In her keynote address, the Finance Minister gave her thanks to the Constituency for the hard work put into this project.

Mulipola explained the importance of the office is providing a place for the Constituency to meet and discuss the district's future developments, guided by the committee and three permanent staff.

Member of Parliament for Faleata No. 4 Ale Vena Ale gave his thanks to the Government for the initiative that has enabled the construction of the Center.

The building consists of three offices, one meeting room and a bathroom, and was constructed by AK Build for \$125,000 and Ale was proud to reveal that the company is owned and run by people from Faleata No. 4.

"It is equipped with desks, computers, machines and internet connection has been established to start serving the constituency,"



Minister of Finance Mulipola Anarosa Ale Molioo

said Ale.

He emphasized the importance of the initial

\$200,000 of the project to construct the Center, which is also utilized towards wages for the

three permanent staff of the Center and for the allowances of the Committee members.



## SPECIAL ADVERTISEMENT

### GENERAL MANAGER DEVELOPMENT BANK OF SAMOA

Applications are invited from interested qualified candidates for the above-mentioned position.

**Salary:** Commensurate with the Salary Package for CEOs of Government Ministries and Public Bodies.  
**Duration of Contract:** A term of three (3) years.  
**Application Package:** Detailed information are included in the Application Package which can be uplifted from the Ministry for Public Enterprises ('MPE') or downloaded from the MPE website [www.mpe.gov.ws](http://www.mpe.gov.ws).

Applications must be marked "**Confidential – Application for General Manager, Development Bank of Samoa**"

**and addressed to:**  
The Chairperson  
Board of Directors  
Development of Samoa  
Apia, Samoa

**and delivered to MPE Office**  
Level 1, NPF Plaza  
Tel 34500  
Beach Road, Apia

#### Closing Date & Submission of Applications:

Completed applications should be received by the Ministry for Public Enterprises, by **Friday, 10<sup>th</sup> February 2023, 4.00 p.m.**

It is important to note that ALL applications received after the time and date stated in the advertisement **WILL NOT** be accepted and considered during the short listing process.

Applications can be submitted via email [cam.wendt@mpe.gov.ws](mailto:cam.wendt@mpe.gov.ws). A hard copy of an electronically submitted application received after the due date may be accepted given the electronic copy was received on time.

For more information, please contact the Assistant Chief Executive Officer (Public Bodies Governance Division) Manu'a Dr. Cam Wendt of the Ministry for Public Enterprises on phone 34500 ext 206 or email [cam.wendt@mpe.gov.ws](mailto:cam.wendt@mpe.gov.ws).



## Samoa National Provident Fund

PLEASE ADDRESS ALL CORRESPONDENCES TO "THE CHIEF EXECUTIVE OFFICER"  
P.O. BOX 2010, APIA, SAMOA, TELEPHONE: 64800 (APIA & VAITELE) SAVAII: 51321, FACSIMILE NO.: (685)20888. Email: [info@npf.ws](mailto:info@npf.ws) / Website: [www.npf.ws](http://www.npf.ws)

## SPECIAL ADVERTISEMENT

### CHIEF EXECUTIVE OFFICER SAMOA NATIONAL PROVIDENT FUND

Applications are invited from interested qualified candidates for the above-mentioned position.

**Salary:** Commensurate with the Salary Package for CEOs of Government Ministries and Public Bodies.  
**Duration of Contract:** A term of three (3) years.  
**Application Package:** Detailed information are included in the Application Package which can be uplifted from the Ministry for Public Enterprises ('MPE') or downloaded from the MPE website [www.mpe.gov.ws](http://www.mpe.gov.ws).

Applications must be marked "**Confidential – Application for Chief Executive Officer, Samoa National Provident Fund**"

**and addressed to:**  
The Chairperson  
Board of Directors  
Samoa National Provident Fund  
Apia, Samoa

**and delivered to MPE Office**  
Level 1, NPF Plaza  
Tel 34500  
Email: [cam.wendt@mpe.gov.ws](mailto:cam.wendt@mpe.gov.ws)  
Beach Road, Apia

#### Closing Date & Submission of Applications:

Completed applications should be received by the Ministry for Public Enterprises, by **Friday, 10<sup>th</sup> February 2023, 4.00 p.m.**

It is important to note that ALL applications received after the time and date stated in the advertisement **WILL NOT** be accepted and considered during the short listing process.

Applications can be submitted via email [cam.wendt@mpe.gov.ws](mailto:cam.wendt@mpe.gov.ws). A hard copy of an electronically submitted application received after the due date may be accepted given the electronic copy was received on time.

For more information, please contact the Assistant Chief Executive Officer (Public Bodies Governance Division) Manu'a Dr. Cam Wendt of the Ministry for Public Enterprises on phone 34500 ext 206 or email [cam.wendt@mpe.gov.ws](mailto:cam.wendt@mpe.gov.ws).

# FIRST PARLIAMENTARY SITTING FOR 2023

The first Parliamentary Sitting for this year commenced this week with the Supplementary Budget and continues to run through the rest of this week,

*Photos: Parliament of Samoa*







17th January 2023

Chief Executive Officer  
Savali Newspaper  
Ministry of the Prime Minister and Cabinet  
Level 5 Government Building  
Apia, Samoa.

**Attention: Mamea**

Dear Sir

**Re: ANZ Samoa Annual Publication of Financial Statements for the Financial Year Ending 30<sup>th</sup> September, 2022**

Enclosed please find the following excerpts from our Financial Year 2022 statements for publication in the Savali Newspaper according to regulatory requirements:

- Statement of Comprehensive Income
- Statement of Financial Position

We kindly request that these be published before 31<sup>st</sup> January 2023 to comply with our statutory obligations.

Please contact the undersigned should you require further information.

Yours faithfully,

*Maurice Poort*

For Bernard Poort,  
**Country Manager**  
ANZ Bank (Samoa) Limited

ANZ Bank (Samoa) Limited



**INCOME STATEMENT**

	Note	Year to 30-09-2022 WST'000	Year to 30-09-2021 WST'000
Interest income	3	23,345	23,945
Interest expense	3	(3,124)	(3,437)
Net interest income		20,221	20,508
Net fee and commission income	4	3,796	4,018
Other operating income	4	12,280	8,523
Operating income		36,297	33,049
Operating expenses	5	(22,334)	(21,950)
Profit before credit impairment and income tax		13,963	11,099
Credit impairment charge reversed/(recognised)	10	2,983	(1,529)
Profit before income tax		16,946	9,570
Income tax expense	6	(4,575)	(2,642)
Profit		12,371	6,928

There are no items of other comprehensive income

**BALANCE SHEET**

	Note	30-09-2022 WST'000	30-09-2021 WST'000
<b>Assets</b>			
Cash and cash equivalents	7	148,431	131,193
Settlement balances receivable		434	292
Investment securities	8	10,000	-
Regulatory deposits		17,179	15,256
Loans and advances to customers	9	293,449	281,157
Deferred tax assets	6	4,744	5,695
Premises and equipment	12	17,176	18,296
Other assets	11	509	613
<b>Total assets</b>		<b>491,922</b>	<b>452,503</b>
<b>Liabilities</b>			
Settlement balances payable		4,612	2,868
Deposits and other borrowings	13	384,779	347,306
Current tax liability	6	1,746	916
Other liabilities	14	4,864	6,768
Employee entitlements		1,322	415
<b>Total liabilities</b>		<b>397,323</b>	<b>358,274</b>
<b>Net assets</b>		<b>94,599</b>	<b>94,229</b>
<b>Equity</b>			
Share capital	15	1,500	1,500
Retained earnings		93,100	92,729
<b>Total equity</b>		<b>94,600</b>	<b>94,229</b>

For and on behalf of the Board of Directors

*[Signature]*  
Director  
22 December 2022

*[Signature]*  
Director  
22 December 2022

The notes to the financial statements form part of and should be read in conjunction with these financial statements.

ANZ Bank (Samoa) Limited

# Fa'aitiitia i le 9.2% tupe lafo mai fafo



Tusia: Tusiga Taofiga

Ua fa'aitiitia i le \$6.3 miliona tusa lea ma le 9.2% tupe fa'amomoli mai atunu'u i fafo i le masina o Oketopa 2022.

I fa'amaumauga a le Faletupe Tutotonu a Samoa (Central Bank of Samoa – C.B.S.) ua fa'ailoa ai i le \$62.6 miliona iā Oketopa 2022 ua fa'aitiitia pe a fa'atusatusa i le tausaga talu ai ma e 9.6% (po'o le \$6.7 miliona) ua mauālo ai nai lo le masina talu ai.

O le pa'ū o tupe fa'amomoli i lea masina i le tausaga talu ai na āfua mai i le fa'aitiitia o tupe mai Ausetalia (fa'aitiitia i le \$4.4 miliona), Niu Sila (fa'aitiitia i le \$1.5 miliona), Amerika Samoa (fa'aitiitia i le \$0.6 miliona) ma isi atunu'u (fa'aitiitia i le \$0.1 miliona).

O le tasi lenei o fa'amoemoega sili mo le tele o 'āiga o lo'o i Samoa, o le maua lea o seleni mai fanau ma 'āiga o lo'o i atunu'u i fafo.

Aemaise ai o galuega fa'avaitaimi i Amerika Samoa, Niu Sila ma

Ausetalia ua to'atele nai o tatou tagatānu'u ua galulue ai ma tausi mai ai 'āiga i Samoa nei.

O le ala lea e 'ave ai pea le fa'amamamua ma le fa'afetai fa'apitoa a le Mālō i nai o tatou tagata o lo'o aumau i atunu'u i fafo, ona o le amanaia ma le fesoasoani mai i le fa'asoa a nai o latou 'āiga o lo'o nonofo ma aumau pea i Samoa.

Mo le silafia e le atunu'u i le malelega fa'amanuia a Lana Afioga i le Ao Mamalu o le Mālō Tuto'atasi o Samoa na ia momoli ai fo'i le fa'afetai fa'apitoa i nai o tatou tagata mai atunu'u i fafo ona o lo latou sao āoga i le tautuaina o 'āiga i Samoa nei.

"E fa'amulia'i ma le ai le agaga fa'afetai i nai o tatou 'āiga o lo'o alala ma pāpā'ā'ao i so'o se tafa o le lalolagi. E lē galo lo outou alolofa mai. Fa'afetai auā e le'o vāea le fala'o'oto i lo outou sao i so'o se auala i le atina'eina o le atunu'u, aemaise o le tautuaina o 'āiga, nu'u ma ekalesia. Matou te alolofa tele atu, ma ia taui atu e le Atua ia sautua tele lo outou agalelei."



Afioga i le Sui Fofoga Fetalai o le Palemene iā Au'apa'au Mulipola Aloitafua.

## Aso ma Masina e usuia ai le Palemene a Samoa

Tusia: Taunuuga Toatasi

Ua pāsia e le Fono Aoao Faitulafono a Samoa i lana ulua'i tauaofiaga i lenei tausaga fou 2023, le fa'agasologa o ana aso fonono mo lenei 12 masina.

E pei ona fofogaina e le afioga i le Sui Fofoga Fetalai o le Palemene iā Au'apa'au Mulipola Aloitafua e fa'apea;

"Ou te tula'i e fa'atū le lafo ina ia fa'amaonia e lenei Fono Aoao Faitulafono le Polokalame o Fonotaga a le Palemene mo lenei tausaga 2023 - 2024.

O aso ma masina ia o le usuia ai Fonotaga a le Palemene;

O le Aso 07 Mati 2023, soso'o ai lea ma le isi fonotaga i le Aso 30 o Me 2023, ma fa'aaauu atu ai i le Aso 20 o Iuni 2023.

O le Aso 24 o Oketopa 2023 e toe faia ai le isi fonotaga a le Palemene, fa'atasi ai ma le Aso 19 o Tesema o le tausaga lava lenei.

Fa'ailoa fo'i e Au'apa'au a aulia ma le manuia le tausaga fou 2024 o le a fa'aaauu le fonotaga a le Palemene i le Aso 23 o Ianuari 2024.

O lo'o fa'agasolo pea i le taimi nei le ulua'i fonotaga a le Fono Aoao Faitulafono a Samoa mo lenei tausaga fou, ma o lo'o talanoaina ai le Tala Fa'atatau Fa'aopoopo o le Tupe 2022 – 2023.

## 8,130 ua si'itia ai tagata asiasi mai i Samoa

Tusia: Tusiga Taofiga

I le toe tatala ai o tuāoi fa'avāomālō i le atunu'u, ua fa'amauina ai le si'itia o e asiasi mai i Samoa.

I fa'amaumauga a le Faletupe Tutotonu a Samoa (Central Bank of Samoa – C.B.S.) ua fa'ailoa manino ai i lana lipoti lata mai o Oketopa 2022, mo tagata sa āfea Samoa i le masina o Setema 2022, e 8,130 fa'atusatusa iā Aokuso e na'o le 6,228 tagata.

I lea aofa'i, o le to'atele o tagata sa asiasi mai Samoa, o lo'o nonofo ma aumau i Niu Sila, ma e 3,925 tagata tusa lea ma le 48.6%, soso'o ai Ausetalia e 1,827 tusa lea ma le 10.3% a'o isi atunu'u i le atu Asia ma le Pasefika, a tu'ufa'atasi e 858 tusa lea ma le 17.5%.

Mo tagata malaga mai Amerika e 714 a'o Amerika Samoa e 697.

I le au'ililiga o lenei lipoti, o lo'o manino ai mafua'aga 'ese'ese o le to'ai taunu'u mai o nei tagata i o tatou laufanua.

O le 3,617 tagata tusa lea ma le 31.8% o e na āsia mai uō ma 'āiga, o le 2,399 tusa lea ma le 37.5% o turisi tafafao mai, 900 o tagata asiasi mai o pisinisi ma fonotaga, o le 95 o ta'aloga, fa'atasi ai ma le 1,250 tagata tusa lea ma le 10.1% o isi mafua'aga lē ma'alofia.

Mai i 'ai latou uma nei sa āfea Samoa, na fa'amauina ai e \$27.7 miliona le seleni sa mafai ona maua mai iā Setema o lo'o fa'ata'avili i lo tatou tamāō'āiga i so'o se auunaga, e tauala mai i 'ai latou nei.



Turisi sa āfea Samoa

Ma ua fa'amauina ai, e si'itia lava seleni aoina mai tagata asiasi mai NZ, e tusa lea ma le \$13.4 miliona, \$6.4 miliona mo Ausetalia, \$3.3 miliona mo Amerika ma le \$2.8 miliona mai isi atunu'u 'ese'ese o le lalolagi.

Mo e na malaga mai e āsia 'āiga ma uō, o le seleni atoa sa aoina mai ai e \$13.3 miliona, e \$7.8 miliona na turisi sa aga'i mai mo malologa ma tafaoga, o tulaga tau pisinisi e \$3.1 miliona, o fonotaga e \$3 miliona fa'atasi ai ma ta'aloga

e \$0.4 miliona.

I totonu o le tolu masina o lenei tausaga fa'aletupe 2022 – 2023, o le aofa'i o seleni maua ua fa'amauina mai turisi asiasi mai i si o tatou atunu'u e \$48.2 miliona.

Mo le silafia o ia masina e tolu e amata mai ia Iulai, Aokuso ma Setema, a'o le masina o Iulai, o lo'o feagai ai pea Samoa ma le tapunia atoa o ona tuāoi fa'avāomālō ona o le sasao fa'aafi o le Koviti – 19.

# E lē a'afia Leoleo i le iloiloga a le P.S.C.

Tusia: Taunuuga Toatasi

Ua fa'ailoa e le a'afia i le Ta'ita'ifono o le Komisi o Galuega a le Mälö (P.S.C.) iä Nonu Lemauga Säleimoa Va'ai i le Savali, e le'o a'afia le Matägaluega o Leoleo, Falepuipui ma le Ola Toefuatä'ina i le iloiloga fa'apitoa o lo'o ua fa'agasolo nei mo Matägaluega uma a le Mälö.

Ua ia fa'amanino fo'i o le Matägaluega o Leoleo e tuto'atasi, e lē i lalo o le fa'amalu a le P.S.C.

O lea fo'i iloiloga e le'o a'afia ai Pisinisi Tumä'oti a le Mälö (S.O.E.).

O le 'auga ma le fa'amoemoe o lea iloiloga, ina ia fa'aleleia auunaga a Matägaluega uma a le Mälö mo le aga'i i le lumana'i e pei ona i ai le Ta'iala mo le Workforce Plan.

"O lo'o iloilo uma Matägaluega i lalo o le fa'amalu a le P.S.C. auä tomä mo'omia mo le aga'i i luma i galuega fai a le Mälö. Workforce plan forecast."

I le feiloä'iga a le Savali ma le a'afia i le Sui Komesina o le Matägaluega o Leoleo, Falepuipui ma le Ola Toefuatä'ina iä Papäli'i Monalisa Tia'i – Ketä, sa ia fa'amanino ai e fa'apea;

"E le'o a'afia le Matägaluega o Leoleo i lea fuafuaga mamao a le P.S.C.

"O le tele o galuega e fa'asalalau e mo'omia ai tagata faigaluega (recruitment process) e aga'i uma lava i le P.S.C.

"O le Matägaluega o Leoleo e i ai lava le



Fanau a le atunu'u ua fa'au'uina ma aloäia le avea ma Malu o le Mälö

latou Vaega o Auunaga Lautele e feagai ma le vaega lea.

"O lo'o fa'ata'oto mai i lalo o le Tulafono o le Komisi o Galuega a le Mälö 2004, aemaise fo'i o Tulafono Fa'atonotonu, lea sa fa'atino ai fe'utanä'iga ma le Komisi, ina ia fa'amautu mai ai vaega ia.

"E silia ma le 900 leoleo o lo'o galulue i le Matägaluega i le taimi nei, peita'i o lo'o mo'omia pea nisi leoleo fou e fesoasoani i le galuega.

"E 1,501 le aofa'i o leoleo o lo'o taula'i i ai le silasila a le Matägaluega e tatau ona i ai.

"O lea o lo'o fa'asolo lava le polokalame mo

le toe sa'ilia o nisi leoleo fou fa'aopopo ina ia mautinoa le gafatia o le mana'oga mo le puipuiga o le saogälēmü o Samoa aoao."

E le gata i le auunaga masani mo le atunu'u lautele, a'o le fuafuaga mo le taligämälö tele o lo'o ua tapena i ai Samoa i le tausaga e 2024.

Please address all correspondence to the officer whose signature appears on this document.



Government of Samoa

## Ministry of Health

Tuesday 17<sup>th</sup> January 2023.

### PUBLIC NOTICE TO ALL HEALTHCARE PROFESSIONALS IN SAMOA

This notice serves as a gentle reminder to all healthcare service providers in Samoa (Healthcare Professionals) both in the government and in the Private Sector who have not been issued with 2023 APCs Your Annual Practising Certificates for 2023 is now due and you are all hereby advised to submit required documentations to office of Registrar for APCs renewal for 2023.

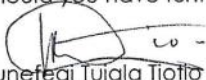
All other Healthcare Professionals that have not been registered and not issued with APCs must contact office of the Registrar for Healthcare Professionals immediately and should not practice.

**Prohibition** –According to relevant Laws , A person must not practice as a Healthcare Profession, or conduct business as a Healthcare Profession, unless that person is authorized under the "Healthcare Profession Registration and Standard Act 2007 and any of the following Acts.

1. Samoa Medical Practitioners Act 2007
2. Samoa Dental Act 2007
3. Samoa Pharmacy Act 2007
4. Samoa Allied Health Act 2014.

A registration and APC audit by the office of the Registrar will be conducted in March 2023.

Should you have further queries please contact the undersigned.

  
Funefea'i Tuiala Tiofiö  
(Registrar HCP & PD & T/ MOH)

IAVAOIA  
APLA  
SAMOA

Tel: (685) 68100  
Ext's 103, 181, 141, 142  
Fax (685) 21.440 or 30775



PO Box Private Bag, Apia, Samoa Ph: 685-34100 | Fax: 685-20293/24058 E-mail: centralbank@cbs.gov.ws Web: www.cbs.gov.ws

### REQUEST FOR PROPOSALS

#### CENTRAL BANK OF SAMOA ULULOLOA OFFSITE BUILDING AND CIVIL CONSTRUCTION WORKS

The Central Bank of Samoa ("CBS") invites proposals from interested bidders for the construction of an Offsite Building at its Ululoloa Compound.

The Request for Proposal Documentations ("RFP") can be uplifted from our Manager Properties, Afioga Lealaitagomoa l'amafana Akerei at Level 1, CBS Building from 9.00am to 5.00pm starting on Monday 16 January 2023 for a non-refundable fee of SAT\$200.00.

The Tender will close on **16 March 2023** at **11.00am**, and the tender opening will be held promptly thereafter at Level 6, Central Bank of Samoa Building.

Bidders are invited to attend should they wish to do so. A pre-bid meeting and site visit will also be conducted prior to close of tender. All information will be contained in the RFP.

All tender bids are to be sealed and marked "**CONFIDENTIAL – RFP FOR THE CONSTRUCTION OF CBS OFFSITE BUILDING**", and are to be submitted at Level 1, CBS Building and placed in the tender box, and should be addressed to:

The Governor  
Central Bank of Samoa  
Private Mail Bag  
APIA

For further enquiries, please contact Lealaitagomoa l'amafana Akerei at 34161 or email [iamafana.akerei@cbs.gov.ws](mailto:iamafana.akerei@cbs.gov.ws).

[Central Bank of Samoa reserves the right to accept or reject any tender/bid submitted at its discretion. The Central Bank may also alter or amend the Tender documentations at any time].



# PUBLIC SERVICE COMMISSION

## Komisi o Galuega a le Malō

Please address all correspondence to the **Chairman**

Faamolemole faatuātusi uma feso'otā'iga i le **Taitaifono**

### SPECIAL ADVERTISEMENT

The Public Service Commission, on behalf of the Government of Samoa, invites applications from qualified applicants for the following Chief Executive Officer positions:

**\* THE SECRETARY FOR THE COMMISSION / CEO**

**Public Service Commission  
(Re-advertisement)**

**Salary: CEO Grade C SAT\$124,444.00 to \$129,854.00 per annum**

**Position Code: PS002962**

**(Due Date: Friday 3rd February 2023)**

**See Conditions below**

**\* CHIEF EXECUTIVE OFFICER**

**(Re-advertisement)**

**Ministry of Customs and Revenue**

**Salary: CEO Grade B SAT\$121,197.00 to \$125,526.00 per annum**

**Position Code: RE001739**

**(Due Date: Friday 3rd February 2023)**

**See Conditions below**

The above appointments are on a contractual basis for three (3) years and are advertised at the end of each 3 year term.

All Application Packages can be uplifted from the Office of the Public Service Commission or downloaded from the PSC website <https://www.psc.gov.ws/employment/special-advertisements/>

#### How to apply:

#### 1. Making an Application (Please read carefully)

(a) For your application to be considered you must complete ALL requirements of the Application Package

1. Letter of Application
2. Complete and signed Application Form (Form 2)
3. Certified Copies of all academic achievements/qualifications.
4. Recently updated Curriculum Vitae (last updated within 12 months)
5. Three most recent written references (within the last 12 months)

**ALL INCOMPLETE APPLICATIONS WILL NOT BE CONSIDERED FOR SHORTLISTING!!!**

#### 2. Submission of Application

(a) All Applications should be addressed to:

**The Chairman  
Public Service Commission  
Level 2, FMFMII Government Building  
Apia, Samoa**

(b) Applications can be submitted via email: [jhisatake@psc.gov.ws](mailto:jhisatake@psc.gov.ws) and/or address specified in the application package

(c) All Applications for the position will be closed on Friday 3rd February 2023 at 5:00pm

(d) For more information, please do not hesitate to contact Jason Hisatake on email [jhisatake@psc.gov.ws](mailto:jhisatake@psc.gov.ws) or SES Division on telephone 22123.

**LATE APPLICATIONS WILL NOT BE ACCEPTED!!!**

📍 Level 2, Government Building (FMFM II),  
04 Apia City Boulevard, Matagalalua.  
P.O.Box 73, Apia Samoa

☎ (685) 22123, 22124, 22125  
(685) 26478, 26479

✉ [psc@psc.gov.ws](mailto:psc@psc.gov.ws)

🌐 [www.psc.gov.ws](http://www.psc.gov.ws)



**Public  
Administration  
Sector**



# PUBLIC SERVICE COMMISSION

## Komisi o Galuega a le Malō

Please address all correspondence to the **Chairman**

Faamolemole faatuātusi uma feso'otā'iga i le **Taitaifono**

### SPECIAL ADVERTISEMENT

The Public Service Commission, on behalf of the Government of Samoa, invites applications from qualified applicants for the following Executive Director position:

**\* EXECUTIVE DIRECTOR**

**Samoa Law Reform Commission  
(Re-Advertisement)**

**Salary: CEO Grade C SAT\$119,033.00 to \$123,361.00 per annum**

**Position Code: LC000001**

**(Due Date: Friday 27th January 2023)**

**See Conditions below**

The above appointments are on a contractual basis for three (3) years and are advertised at the end of each 3 year term.

All Application Packages can be uplifted from the Office of the Public Service Commission or downloaded from the PSC website <https://www.psc.gov.ws/employment/special-advertisements/>

How to apply:

#### 1. Making an Application (Please read carefully)

(a) For your application to be considered you must complete ALL requirements of the Application Package

1. Letter of Application
2. Complete and signed Application Form (Form 2)
3. Certified Copies of all academic achievements/qualifications.
4. Recently updated Curriculum Vitae (last updated within 12 months)
5. Three most recent written references (within the last 12 months)

**ALL INCOMPLETE APPLICATIONS WILL NOT BE CONSIDERED FOR SHORTLISTING!!!**

#### 2. Submission of Application

(a) All Applications should be addressed to:

**The Chairman  
Public Service Commission  
Level 2, FMFMII Government Building  
Apia, Samoa**

(b) Applications can be submitted via email: [jhisatake@psc.gov.ws](mailto:jhisatake@psc.gov.ws) and/or address specified in the application package

(c) All Applications for the position will be closed on Friday 27th January 2023 at 5:00pm

(d) For more information, please do not hesitate to contact Jason Hisatake on email [jhisatake@psc.gov.ws](mailto:jhisatake@psc.gov.ws) or SES Division on telephone 22123.

**LATE APPLICATIONS WILL NOT BE ACCEPTED!!!**

📍 Level 2, Government Building (FMFM II),  
04 Apia City Boulevard, Matagalalua.  
P.O.Box 73, Apia Samoa

☎ (685) 22123, 22124, 22125  
(685) 26478, 26479

✉ [psc@psc.gov.ws](mailto:psc@psc.gov.ws)

🌐 [www.psc.gov.ws](http://www.psc.gov.ws)



**Public  
Administration  
Sector**



Saunoaga Autū a le Afioga iā La'auli Leuatea Polāta'ivao Fosi, Minisitā o le Matāgaluega o Fa'ato'aga ma Faigāfaiva.

## Saunoaga Autū a le Afioga iā La'auli Leuatea Polāta'ivao Fosi, Minisitā o le Matāgaluega o Fa'ato'aga ma Faigāfaiva mo le Fa'alauiloa Aloāia ma le Tatalaina o Fuafuaga Autasi a le Vaega Mā'oti o Fa'ato'aga ma Faigāfaiva mo le Tausaga Fa'aletupe 2022 / 2023 – 2026 / 2027 (Aso Tofi, 19 Ianuari 2023)

Lau Susuga Moeaiseu Raymond Betham, Ekalesia Egelani i Samoa nei, Afioga i Minisitā o le Kapeneta ma Minisitā Lagolago, Sui mamalu o ā tatou pa'aga mai fafo, Aemaise o le mamalu o le au valā'aulia o

lenei aso,

I le ava ma le fa'aaloalo, ou te tula'i atu ai, e tu'uina atu sina tala pu'upu'u, e tusa o le 'auga ma le fa'amoemoe o lenei aso. O le asō ua fa'alauiloa aloāia ai la tatou Fuafuaga Autasi a le Vaega Mā'oti o Fa'ato'aga ma Faigāfaiva mo le Tausaga Fa'aletupe 2022 / 2023 – 2026 / 2027.

Ua mautinoa ma talitonu lo tatou Mālō, i le tūa tele o le tatou Vaega Mā'oti o fa'ato'aga ma faigāfaiva i le toe fa'aleleia o la tatou tamāo'āiga mo le lumana'i manuia o tagata lautele o si o tatou atunu'u. Ua fa'amautūina le tūa tele o faifa'ato'aga ma faifaiva i le mau taumafa pea o Samoa i taimi o le Koviti - 19.

O le tūa tele o le sao o le vaega tumā'oti o Fa'ato'aga ma Faigāfaiva e tatau ona tatou toe tō mānatu pea ini auala e toe fa'aolaola ma toe timata le upega auā sa lelei a tatou faifa'ato'aga ma faigāfaiva ma si o tatou atunu'u.

O le Fuafuaga Autasi a le Vaega Mā'oti o Fa'ato'aga ma Faigāfaiva o lo'o fa'ata'atitia mai ai galuega fa'atino e tatau ona ausia e le Vaega Mā'oti i le isi 5 tausaga fa'aletupe 2022 / 2023 – 2026 / 2027. O lenei fuafuaga o lo'o māioio lava le matāfaioi o faiga fa'avae lautetele ina ia manino le fa'atinoina o galuega a le Vaega Mā'oti ma ana pa'aga aemaise o nu'u ma afio'aga auā le atina'e o lenei Vaega Mā'oti tūa mo Samoa.

O lo'o sosolo lenei Fuafuaga Autasi ma le Va'aiga Mamao a le Mālō o lo'o i ai nei ina ia, "Fa'aauuina pea le mau taumafa o Samoa, ma ia malu puipuia tupe maua o le tamāo'āiga mo se lumana'i manuia o Samoa". O lo'o i ai le fa'amoemoe o le a ausia lenei va'aiga mamao e ala lea i le, "Unā'ia ma fa'amalosia le sao o le Vaega Mā'oti o Fa'ato'aga ma Faigāfaiva ina ia mau taumafa pea Samoa, fa'amalosia le taumafa tatau, si'itia tupe maua ma le fa'atuputupulā'ia o le tamāo'āiga".

E lima (5) ni Sini Autū o lo'o 'ave i ai le fa'amuumua ina ia ausia e lenei Fuafuaga Autasi;

I. Malu puipuia ma mau taumafa pea Samoa mai atina'e tau fa'ato'aga ma faigāfaiva ma si'itia le tulaga o atina'e tau i'a (aquaculture).

II. Si'itia le saogālēmū o meataumafa ma le taumafa tatau

III. Si'itia atina'e i nu'u i tua

IV. Fa'aleleia atili o auunaga tumā'oti ma le auina atu o oloa ma fefa'atau'iga

V. Iā mautinoa le maua pea o avanoa talafeagai mo le fa'amalosia o le atina'eina o le Vaega Mā'oti.

A outou afioga i Fa'auluuluga mai Vaega 'Ese'ese o Mālō Aufa'atasi fa'apea a tatou pa'aga fa'avāomālō, ma le mamalu o le au valā'aulia o lenei aso, ou te fiafia tele e fa'ailoa atu, ua fa'alauiloa aloāia nei la tatou Fuafuaga Autasi a le Vaega Mā'oti o Fa'ato'aga ma Faigāfaiva mo le Tausaga Fa'aletupe 2022 / 2023 – 2026 / 2027.

E talitonu o le a tatou galulue fa'atasi ina ia mautinoa le lelei o le fa'atinoga o la tatou fuafuaga autasi auā le lumana'i manuia o le tatou vaega mā'oti ma ia mautinoa le si'itia ai o le tamāo'āiga o Samoa mo nei ma aso a sau.

Soifua ma ia manuia!

Please address all correspondence  
To the Chief Executive Officer

In reply, please quote the file reference



GOVERNMENT OF SAMOA

### MINISTRY OF FINANCE

File ref:

16<sup>th</sup> January, 2023

To All Interested Bidders,

#### **RE: INVITATION FOR BID: SUPPLY OF BULK FUELS – SAMOA 2023**

- i. The Government of Samoa through the Ministry of Finance ("procuring entity") now invites bids to provide the following services: "Supply of Bulk Fuels to The Government of Samoa". The procuring entity intends to use the available funds for payments under the contract for which this Request For Bids ("RFB") is issued. More details on the services are provided in the RFB.
- ii. A Company will be selected based on the evaluation criteria in the Request For Bids ("RFB") document and procedures described in this RFB document in accordance with Treasury Instructions – Section 6: Procurement & Contracting (Part K Amended 2020) and the Government of Samoa Procurement Operating Manual (POM) 2020.
- iii. The RFB includes the following documents which can be obtained from the Ministry of Finance website (<https://www.mof.gov.ws/services/procurement/tender-advertisement/>) or from the Government of Samoa e-Tendering Portal: ([https://portal.tenderlink.com/mof\\_samoa/](https://portal.tenderlink.com/mof_samoa/)):  
Part A – Background and Bidding Procedures;  
Part B – Tender Schedules of Information;  
Part C – Tender Schedules for Submissions.
- iv. For enquiries on the RFB document, interested bidders/applicants should contact the following person at the address given below from 9.00am to 5.00pm on normal working days:  
Ms. Heremoni Suapaia-Ah Hoy  
Assistant Chief Executive Officer  
Ministry of Finance  
Apia  
SAMOA  
Phone: (685) 34344  
Email Address: [heremoni.suapaia@mof.gov.ws](mailto:heremoni.suapaia@mof.gov.ws)
- v. The RFB will close on **Monday, 27<sup>th</sup> February at 11.00am (local time)** and all bids shall be uploaded and submitted through the Government of Samoa e-Tendering Portal ([https://portal.tenderlink.com/mof\\_samoa/](https://portal.tenderlink.com/mof_samoa/)) by **Monday, 27<sup>th</sup> February at 11.00am** or submit into the Tender Box on Level 4, Central Bank Building and be clearly marked "**Tender for Bulk Fuels Supply Samoa 2023 - Request for Bids**".
- vi. The RFB will be opened immediately after the deadline in the presence of bidder's representatives who choose to attend.
- vii. Late RFBs will not be considered and will be returned unopened.
- viii. The Ministry of Finance shall not be responsible for any cost or expenses incurred by the bidder in connection with the preparation or delivery of their RFBs.

Yours sincerely,

  
Saoleitiiti Maeva Betham Vaai  
**CHIEF EXECUTIVE OFFICER**

# Fa'aitiitia i le 36% fa'alavelave i aso fiafia

Tusia: Taunuuga Toatasi

E le'i moemoenoa le Matāgaluega o Leoleo, Falepuipui ma le Ola Toefuatā'ina i le puipuia o Samoa a'o i ai i aso fiafia i le fa'ai'uga o le tausaga 2022 ma le amataga o lenei tausaga fou 2023.

Ina ua lalata i aso fiafia, e le'i mapu fa'alailoa ma polokalame fa'amanatu a Malu o le Mālō, e tima'i ma toe fautuaina ai le atunu'u lautele ina ia tautuanā le saogālēmū mai fa'alavelave tutupu fa'afuase'i ona o le tagofia o le 'ava malosi fa'apea ai ma le 'ave'ave lē fa'autauta.

O se fiafiaga sili lea i le Matāgaluega e pei ona fa'ailoa e le afioga i le Sui Komesina iā Papāli'i Monalisa Tia'i – Ketī, le fa'aitiitia ai o nisi o fa'afitauli tutupu fa'afuase'i ona o ia uiga.

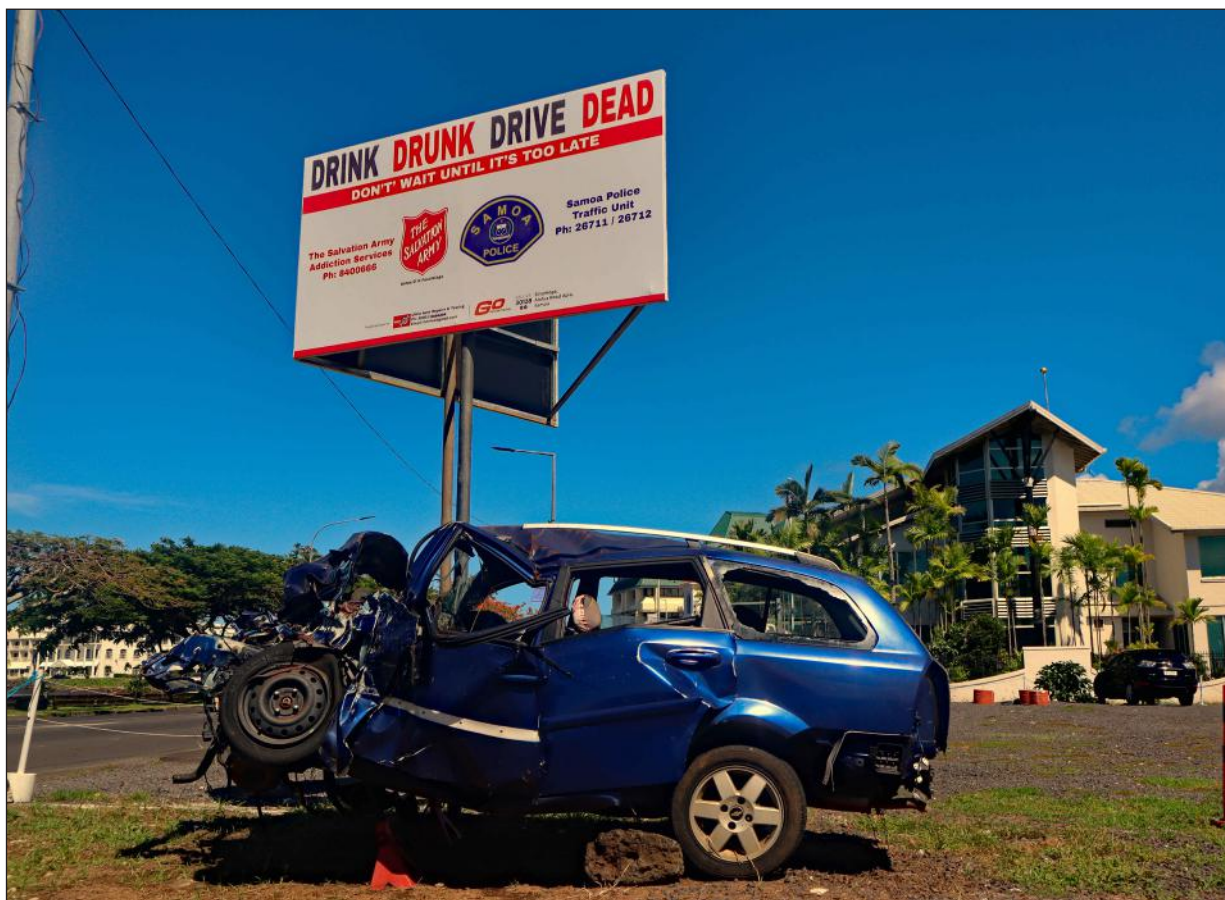
"E ui sa i ai nisi o fa'alavelave sa tula'i mai a'o alo atu le atunu'u mo le fa'amanatuina o le Kerisimasi ma le Tausaga Fou 2023, ae i fa'amaumauga a le Matāgaluega i lona aotelega ua fa'aitiitia ai valā'au mai le mamalu o le atunu'u e tusa o matā'upu e mo'omia ai le fesoasoani fa'atusatusa i tausaga ua mavae.

"O fa'alavelave sa tutupu pea i aso fiafia e pei ona fa'amauiina e le Matāgaluega, e aofia ai le onānā, fe'ese'eseā'iga i totonu o 'āiga, fa'ao'olima aemaise le 'ave ta'avale fa'atamala.

"O matā'upu ogaoga sa alia'e mai pea i le fa'ai'uga o lenā tausaga, ma ua si'itia mai le 3 sa fa'amauiina i le tausaga 2021 i le 5 i le tausaga 2022, o le fasioti tagata (homicide) ma ua ma'imau ai le soifua o nai o tatou tagata.

"O se tasi o matā'upu o se Leoleo ua maliu ma o lo'o tālia pea le fa'atinoina o lona tā'otoga fa'apitoa.

"O lo'o fa'agasolo pea fe'utanā'iga ma le Ofisa o le Loia Sili mo le foma'i fa'apitoa e fa'atinoina



*E tūa le fa'autautaga tatau ma le fa'amoemoe ola e fa'afioefio ai le soifua ina ia 'aua ne'i ma'imau mai fa'alavelave tutupu fa'afuase'i ona o le 'ava malosi ma le 'ave ta'avale fa'atamala.*

tā'otoga mo tino māliili.

I le lipoti a le Matāgaluega, o lo'o fa'amauiina ai o le 'ava malosi o le Taula Strong ma mea sui 'o'ona o itu'āiga 'ava malosi nei sa tele lona fa'aāogaina i taimi o aso fiafia.

Ma ua māua ai fo'i o lo'o fa'aāogaina pea e nisi o le atunu'u itu'āiga 'ava malosi o lo'o fa'asāina ona toe fa'atau atu i le taimi nei.

"O lo'o fa'agasolo la su'esu'ega a le

Matāgaluega, po'o fea tonu lea o lo'o fa'atau mai ai e tagata ia itu'āiga 'ava malosi.

I galuega masani a Leoleo o lo'o fa'amauiina ai e 69 i latou sa taofia e leoleo i Upolu ae 12 i Savai'i e āfua i le solia o Tulafono.

"Ma ua fa'aitiitia ai lava le fuainumera o i latou sa taofia i le vaitau o le Kerisimasi o le Tausaga Fou pe a fa'atusatusa i le tele o tausaga ua tuana'i."

Sa momoli le fa'afetai fa'apitoa a le Mālō e tauala atu i le Matāgaluega o Leoleo, Falepuipui ma le Ola Toefuatā'ina i le amanaia ma le lagolagosua o le atunu'u lautele i fautuaga ma timā'iga sa folasia atu, e ui sa tutupu pea nisi o fa'alavelave, ae ua molimauina ua fa'aitiitia, o le pine fa'amaui lenā o se atunu'u e ola fegalegalea'i ma soifua galulue fa'atasi.

# Alofa i ou tuāoi, ia pei o oe lava iā te oe

Tusia: Taunuuga Toatasi

Ua tumatila Samoa, ona o le loto alofa ma le agalelei o fanau seila Samoa, e lavea'i nisi o tagata mai isi atunu'u o le lalolagi, a'o i luga o le vasa loloa, o se nofoaga e lamatia ai le soifua i taimi uma, ona o le souā o galu fati o'o o le sami.

"E lagona le agaga fa'agae'etia ona ua māua i lipoti i fanau seila Samoa, sa taulāmua i le fa'atinoga o le galuega lavea'i, mo le fa'asaoina o soifua o ni tagatānu'u Cuba a'o fa'aoepepea ai i luga o le sami, o ni tagata sulufa'i o lo'o sa'ili ni atunu'u saogālēmū e to'a ma mapu ai mai fevesiā'iga ma taua o lo'o faia i totonu o latou atunu'u.

"O lea agaga alofa o fanau Samoa, ua si'itia ai fo'i ma le tauleleia o le auaunaga a alo seila Samoa i Kamupani Va'a fa'avāomālō i atunu'u i fafo," o le lagona fiafia lea o le afioga i le Fa'atonu Sili Aoa o le Auaunaga o Va'a a Samoa (S.S.S.) iā Lautimuia Afoa Uelese Va'ai.

Mo le silafia e le atunu'u, o se galuega alofa ma le fa'aaloogia sa fa'atinoina e nai tamafanau a le atunu'u, e ala i le laveā'ia o soifua o nai tagata sulufa'i Cuba lea sa maua i luga o le sami.

E to'a 24 tagata sulufa'i mai Cuba sa i luga o se va'a sa fa'aoepepea i le sami mo le fitu aso e pei ona fa'ailoa e se tasi o seila Samoa sa auai ai i lea galuega lavea'i, le susuga iā Sakaria Fa'ai'uaso.

O le va'a meli o le M.S.C. Meraviglia o lo'o galulue ai ia fanau.

"O se tasi lenei o galuega e nafa ma seila, o galuega lavea'i i so'o se taimi e mo'omia ai pe a a'afia ma lamatia le soifua o tagata lautele i luga o va'a ma le vasa.



*Galuega alofa ma le fa'aaloogia sa fa'atinoina e nai tamafanau a le atunu'u, e ala i le laveā'ia o soifua o nai tagata sulufa'i Cuba lea sa maua i luga o le sami.*

"Ua matuā lava tapena tatou seila mo ia itu'āiga galuega lavea'i aemaise o lo latou silafia mana'omia ma le poto masani i le tino ae silisili ai le agaga auā taimi o fa'alavelave tutupu fa'afuase'i.

"O le vi'iga e tumau i le Atua ona o le fa'ataunu'uina ma le manuia o galuega lavea'i

sa feagai ma nai ma o lo'o saogālēmū uma i latou.

"O le itu tūa e ao ona silafia, e 'ave lava le fa'amamua o le galuega fa'aseila i le saogālēmū.

"E le gata i le saogālēmū o le va'a, ae pito sili ona tūa le saogālēmū o soifua o tagata uma

o lo'o i luga o le va'a.

"O le valā'uina e mana'omia ai le a'oa'oina lelei o le mafafau, malosi ma mālōlōina le tino, toa le loto, ae sili le fa'amoemoe i le puipuiga mana a lo tatou Tapa'au Sili e mafai ai ona fa'atino le valā'uina."

# OFISA AUTŪ O LE FONO FA'AVAE MO LE ITUMĀLŌ PALOTA O FALEATA #4

O le Aso To'ana'i na tatala aloāia ai le Ofisa o le Fono Fa'avae mo le Itumālō Palota o Faleata #4 i Toāmua auā le amatalia o ana galuega ua fa'ata'oto mo atina'e ma polōketi e manuia ai tagatānu'u o afio'aga ta'itasi o le Itumālō atoa.

Anarosa 'Ale - Molio'o ma le afioga i le Minisitā o le Matāgaluega o Fa'ato'aga ma Faigāfaiva iā La'auli Leuatea Polāta'ivao Fosi e fai ma Sui o le Mālō e molimauina lenei fa'amoemoe tāua ua tino mai.

**Ata Pu'eina: Marc Membrere ma Leaosā Fa'aifo Fa'aifo**

O lea sauniga sa auai ai le Minisitā o le Matāgaluega o Tupe, le afioga iā Mulipola

