



Syndromic Surveillance Report

Epiweek 29: 15/07/24 – 21/07/24

Date of report: 22nd July, 2024

Prepared by: National Health Surveillance & IHR Division

Email: surveillance@health.gov.ws

Tel: 66506/66507

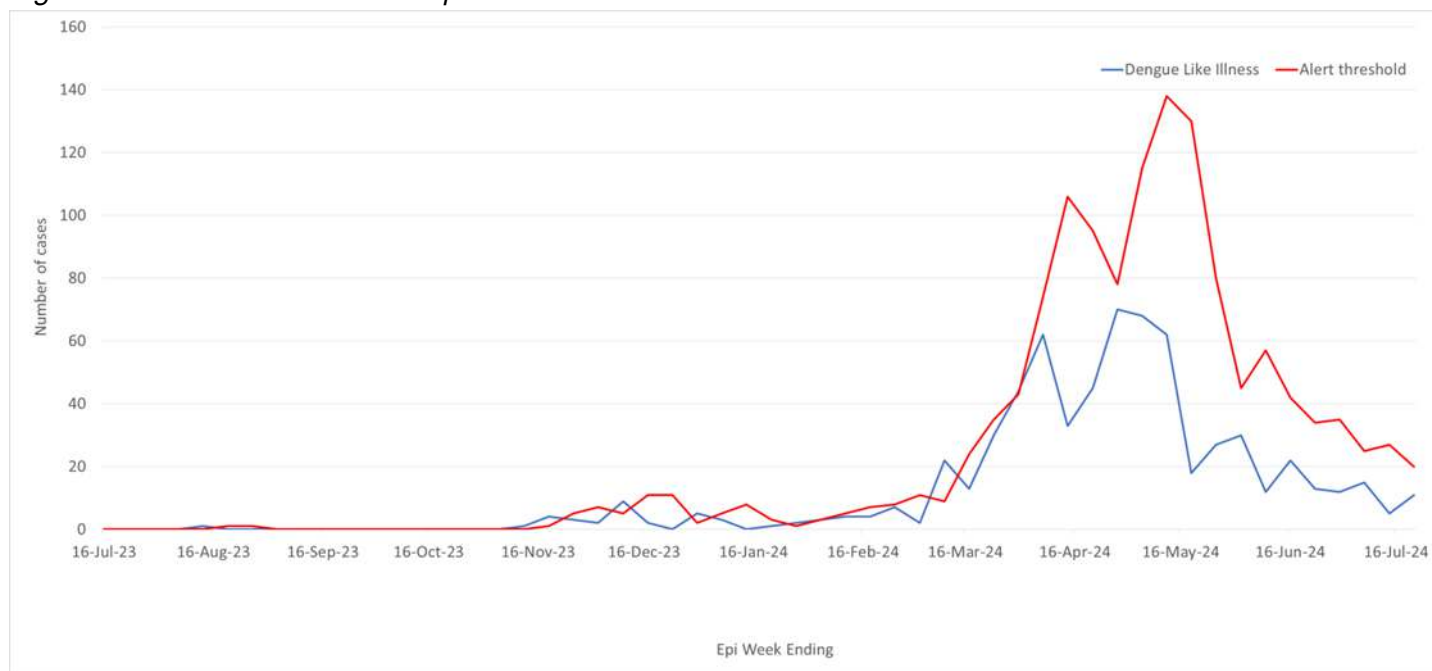
1. Dengue like illness (DLI)

Case Definition: Fever ($\geq 38^{\circ}\text{C}$) for at least 2 days, PLUS at least 2 of the following: Nausea or vomiting; Muscle or joint pain; Severe headache or pain behind the eyes; Rash; bleeding

Alert threshold: *twice the average number of cases seen in the previous two weeks*

Epi-weeks	Epi-week 28: 08/07/24-14/07/24	Epi-week 29: 15/07/24-21/07/24
Total cases reported	5	11
Moving Average	13.5	10
Threshold	27	20

Figure 1. Number of DLI cases reported from all health facilities



The Ministry of Health has declared a dengue outbreak on the 19th April 2024 and urges the public to heed advise and recommendations on preventative measures such as: clean-up and remove stagnant water sources around the house that are potential mosquito breeding sites; wear appropriate clothing to minimize mosquito bites; and use mosquito nets and repellents such as lotion and sprays. If you are affected, watch out for severe symptoms and seek medical attention immediately. Also monitor other people in the household for similar symptoms and present to the hospital for testing and health advice. Although the trend shows a decrease, it is still advised to continue the practice of preventative measures.



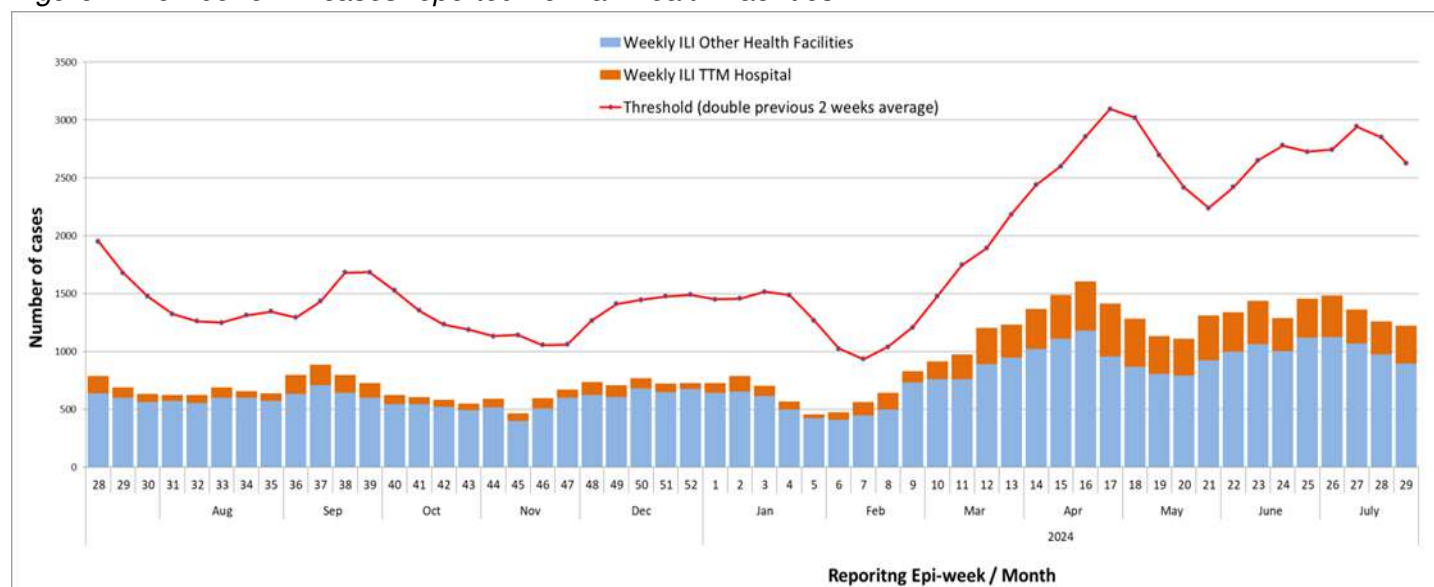
2. Influenza like illness (ILI)

Case Definition: An acute respiratory infection with a history of fever or measured fever of $\geq 38\text{ C}^\circ$ and cough, with onset within the last 10 days

Alert threshold: **Exceeding double the average in the previous 2 weeks**

Epi-weeks	Epi-week 28: 08/07/24-14/07/24	Epi-week 29: 15/07/24-21/07/24
Total cases reported	1262	1223
Moving Average	1425	1314
Threshold	2850	2627

Figure 2. Number of ILI cases reported from all Health Facilities



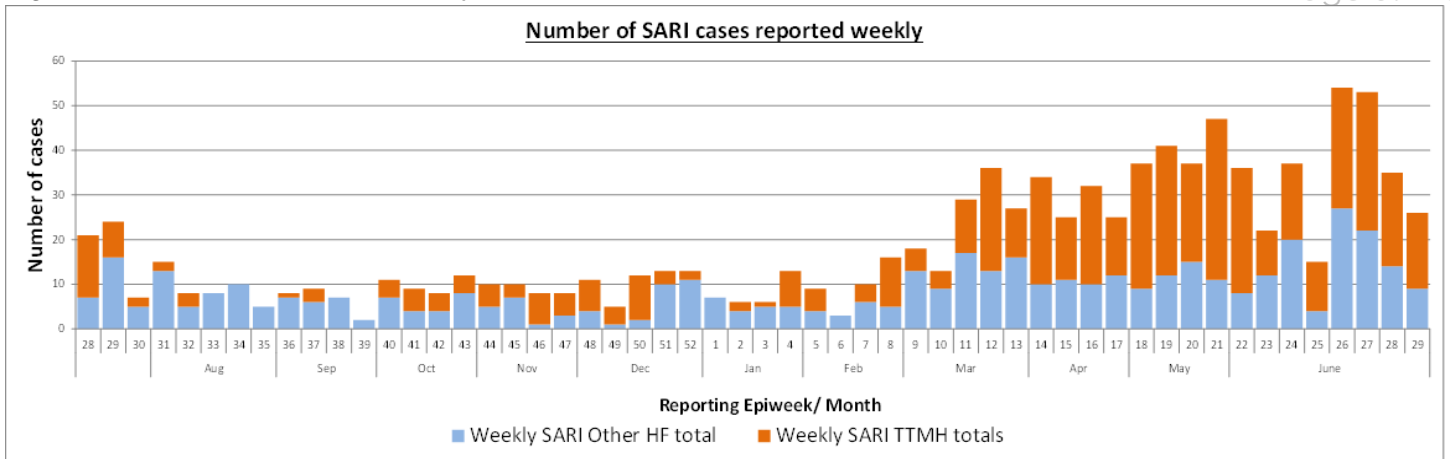
The influenza like illness case count is below the alert threshold. However, we continue to observe an increase of people presenting to the hospital with flu-like symptoms, and the numbers remain high. The Ministry of Health still highly recommends the general public to continue the practice of preventative measures such as – wearing of masks especially when you're having flu-like symptoms such as cough and runny nose, hand hygiene and avoid large gatherings without masks. If you are feeling ill with flu-like symptoms, please see a nurse or doctor, stay home and take medications as prescribed.

3. Severe acute respiratory infection (SARI)

Case Definition: An acute respiratory infection with a history of fever or measured fever of $\geq 38\text{ C}^\circ$ and cough, with onset within the last 10 days, AND requiring hospitalization

Alert threshold: **2 linked cases**

Epi-weeks	Epi-week 28: 08/07/24-14/07/24	Epi-week 29: 15/07/24-21/07/24
Total cases reported	35	26
Moving Average	53.5	44
Threshold	2 linked cases	2 linked cases

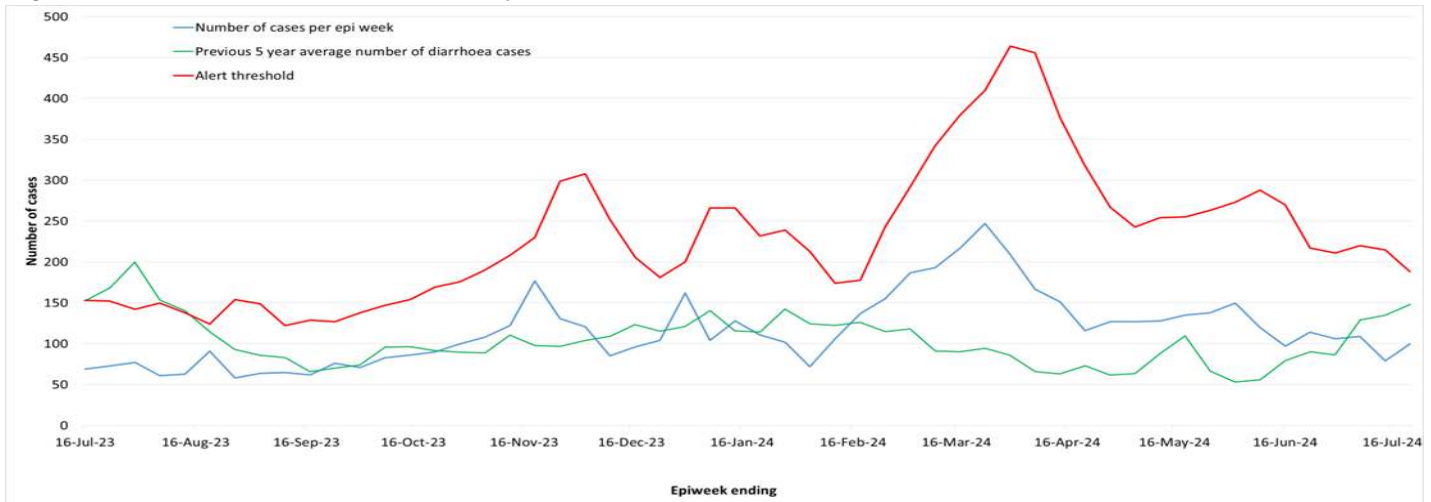


The severe acute respiratory infection cases reported have been investigated, and no known links were identified. Therefore, it does not meet the definition exceeding the threshold. Despite the threshold, the case count remains high. Therefore, the public is strongly advised to continue to practice preventative measures as mentioned above such as wearing of masks, hand hygiene and avoid crowded places.

4. Diarrhea

Case Definition: Three (3) or more loose or watery or bloody stools in 24hrs		
Alert threshold: more than twice the average of the last two weeks count		
Epi-weeks	Epi-week 28: 08/07/24-14/07/24	Epi-week 29: 15/07/24-21/07/24
Total cases reported	79	100
Moving Average	107.5	94
Threshold	215	188

Figure 4. Number of Diarrhea cases reported from all health facilities



Diarrhea case count remains below the alert threshold. The Ministry of Health advises the public to continue good hand hygiene or hand washing practices, boil water before drinking and ensure food preparation is safe and sanitary.