



Syndromic Surveillance Report

Epi-week 47: 18/11/24 – 24/11/24

Date of report: 25th November, 2024
Email: surveillance@health.gov.ws

Prepared by: Health Security & Disease Surveillance Division
Tel: 66506/66507

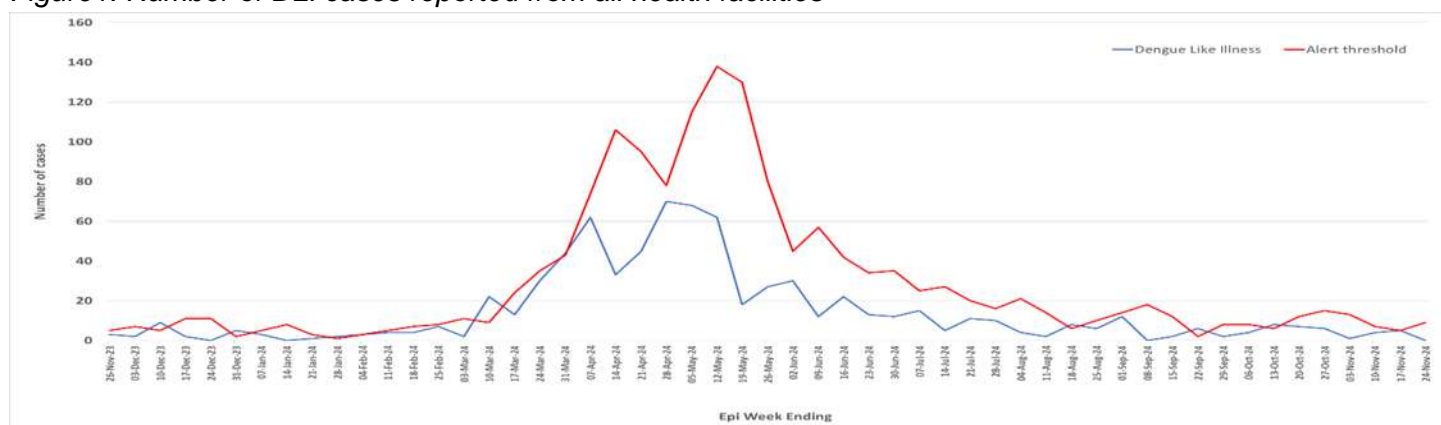
1. Dengue like illness (DLI)

Case Definition: Fever ($\geq 38^{\circ}\text{C}$) for at least 2 days, PLUS at least 2 of the following: Nausea or vomiting; Muscle or joint pain; Severe headache or pain behind the eyes; Rash; bleeding

Alert threshold: twice the average number of cases seen in the previous two weeks

Epi-weeks	Epi-week 46: 11/11/24 – 17/11/24	Epi-week 47: 18/11/24 – 24/11/24
Total cases reported	5	0
Moving Average	2.5	4.5
Threshold	5	9

Figure 1. Number of DLI cases reported from all health facilities



The case count of dengue like illness remains below the alert threshold. The Ministry of Health strongly advises the public to maintain preventive practices, including eliminating stagnant water sources around homes that could serve as mosquito breeding sites, wearing appropriate clothing to reduce mosquito bites, and using mosquito nets and repellents such as lotions and sprays. If you experience symptoms, be vigilant for severe manifestations and seek medical attention promptly. Additionally, monitor other household members for similar symptoms and seek testing and medical advice at a hospital if needed.

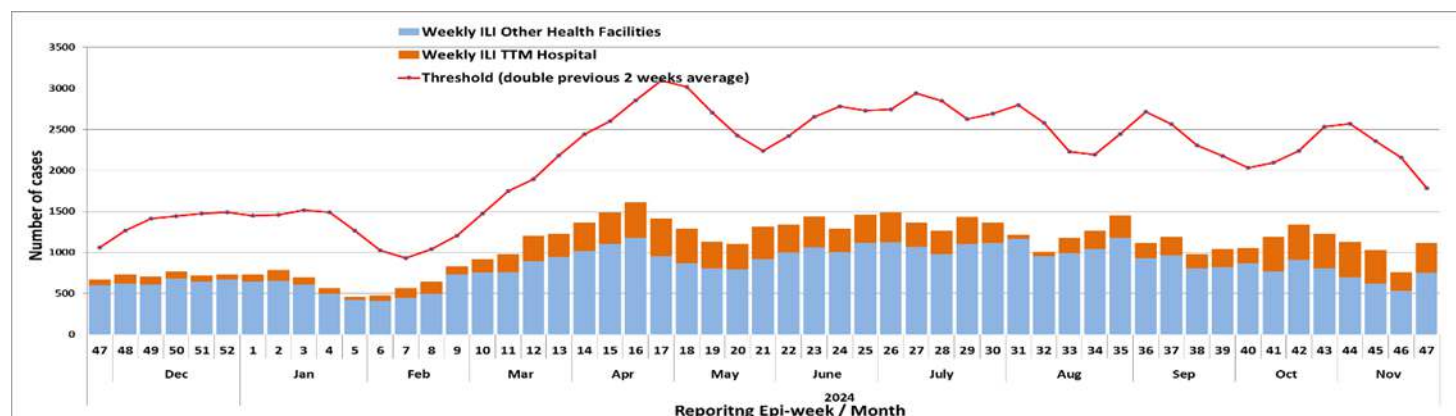


2. Influenza like illness (ILI)

Case Definition: An acute respiratory infection with a history of fever or measured fever of $\geq 38\text{ C}^\circ$ and cough, with onset within the last 10 days		
Alert threshold: Exceeding double the average in the previous 2 weeks		
Epi-weeks	Epi-week 46: 11/11/24 – 17/11/24	Epi-week 47: 18/11/24 – 24/11/24
Total cases reported	759	1117
Moving Average	1079	894
Threshold	2158	1787

Figure 2. Number of ILI cases reported from all Health Facilities

The influenza like illness case count is below the alert threshold. The Ministry of Health still highly recommends the general public to continue the practice of preventative measures such as – wearing of masks especially when you’re having flu-like symptoms such as cough and runny nose, hand hygiene and avoid large gatherings without masks. If you are feeling ill with flu-like symptoms, please see a nurse or doctor, stay home and take medications as prescribed.

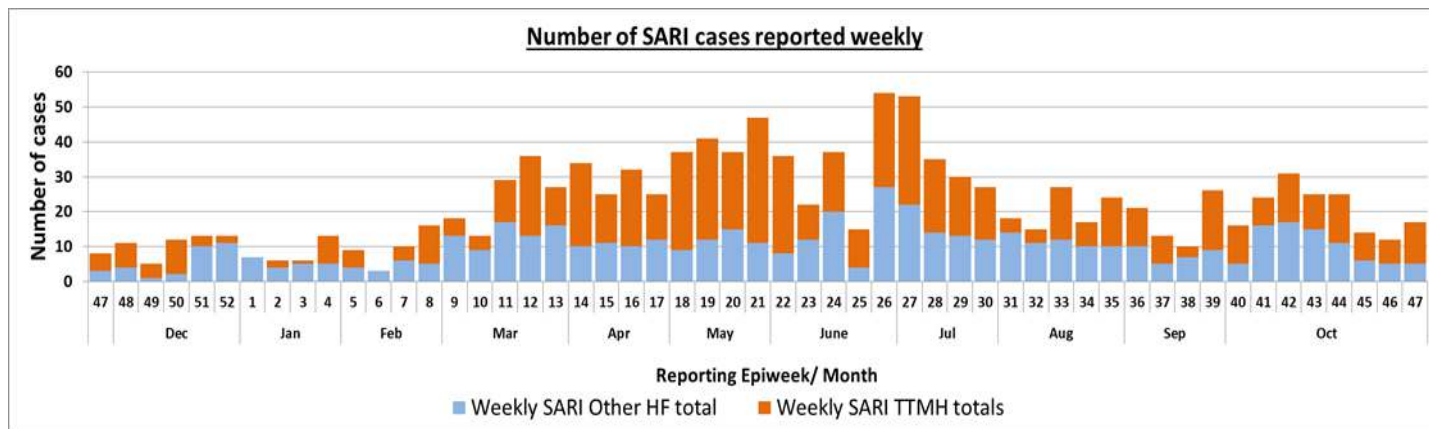


3. Severe acute respiratory infection (SARI)

Case Definition: An acute respiratory infection with a history of fever or measured fever of $\geq 38\text{ C}^\circ$ and cough, with onset within the last 10 days, AND requiring hospitalization		
Alert threshold: 2 linked cases		
Epi-weeks	Epi-week 46: 11/11/24 – 17/11/24	Epi-week 47: 18/11/24 – 24/11/24
Total cases reported	12	17
Moving Average	19.5	13
Threshold	2 linked cases	2 linked cases

Figure 3. Number of SARI cases reported from all health facilities





The severe acute respiratory infection cases reported have been investigated, and no known links were identified. Therefore, it does not meet the definition exceeding the threshold. Despite the threshold, the case count remains high. Therefore, the public is strongly advised to continue to practice preventative measures as mentioned above such as wearing of masks, hand hygiene and avoid crowded places.

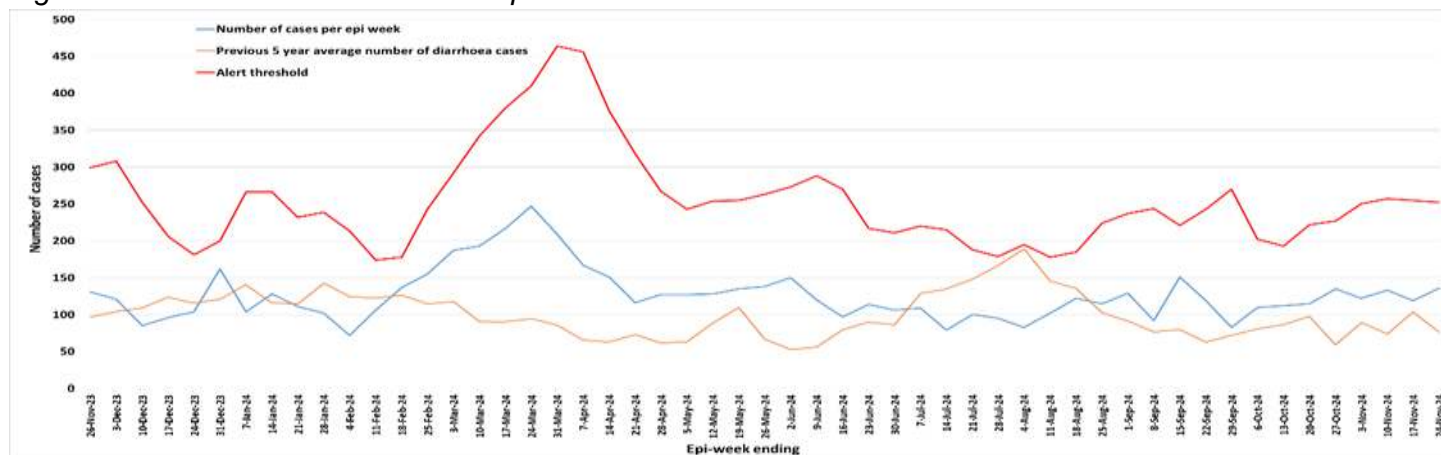
4. Diarrhea

Case Definition: Three (3) or more loose or watery or bloody stools in 24hrs

Alert threshold: **more than twice the average of the last two weeks count**

Epi-weeks	Epi-week 46: 11/11/24 – 17/11/24	Epi-week 47: 18/11/24 – 24/11/24
Total cases reported	119	134
Moving Average	127.5	126
Threshold	255	252

Figure 4. Number of Diarrhea cases reported from all health facilities



Diarrhea case count remains below the alert threshold. The Ministry of Health advises the public to continue good hand hygiene or hand washing practices, boil water before drinking and ensure food preparation is safe and sanitary.