



Syndromic Surveillance Report

Epi-week 2: 06/01/25 – 12/01/25

Date of report: 13rd January, 2025

Email: surveillance@health.gov.ws

Prepared by: Health Security & Disease Surveillance Division

Tel: 66506/66507

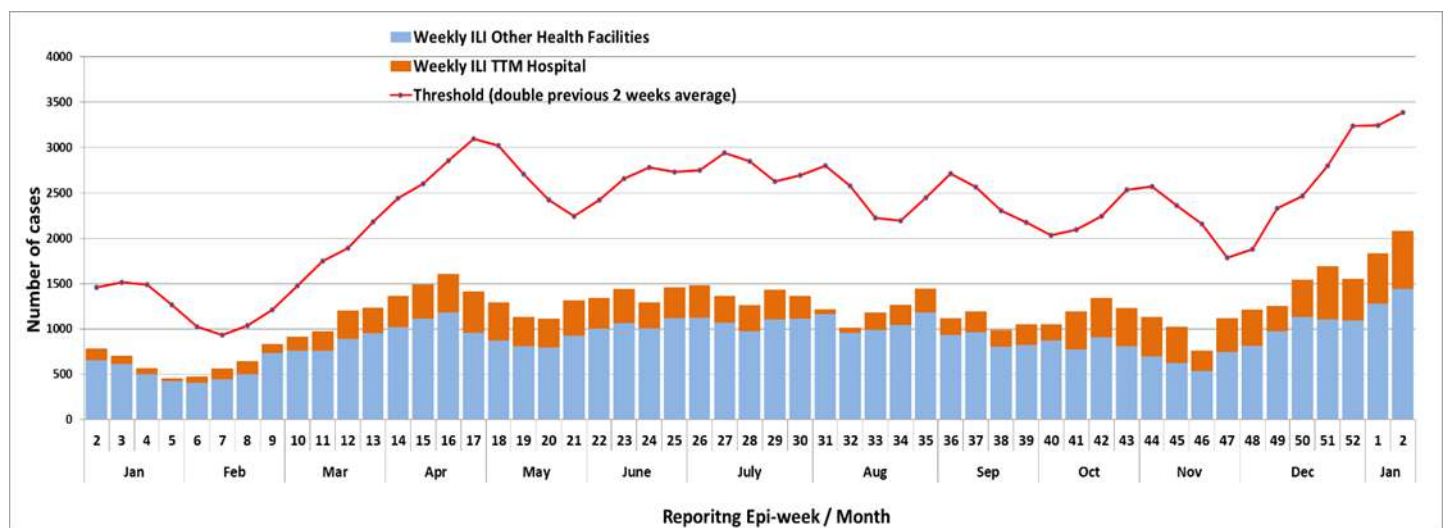
1. Influenza like illness (ILI)

Case Definition: An acute respiratory infection with a history of fever or measured fever of $\geq 38\text{ C}^\circ$ and cough, with onset within the last 10 days

Alert threshold: Exceeding double the average in the previous 2 weeks

Epi-weeks	Epi-week 01: 30/12/24 – 05/01/25	Epi-week 02: 06/01/25 – 12/01/25
Total cases reported	1832	2080
Moving Average	1622	1692
Threshold	3244	3383

Figure 1. Number of ILI cases reported from all Health Facilities

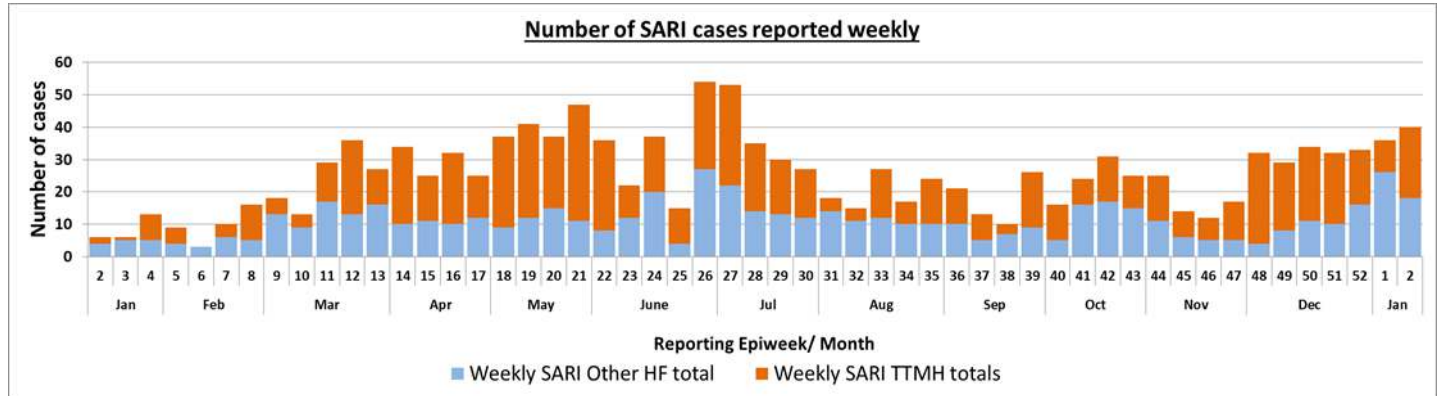


Case Definition: An acute respiratory infection with a history of fever or measured fever of $\geq 38\text{ C}^\circ$ and cough, with onset within the last 10 days, AND requiring hospitalization

Alert threshold: **2 linked cases**

Epi-weeks	Epi-week 01: 30/12/24 – 05/01/25	Epi-week 02: 06/01/25 – 12/01/25
Total cases reported	36	40
Moving Average	32.5	34.5
Threshold	2 linked cases	2 linked cases

Figure 2. Number of SARI cases reported from all health facilities



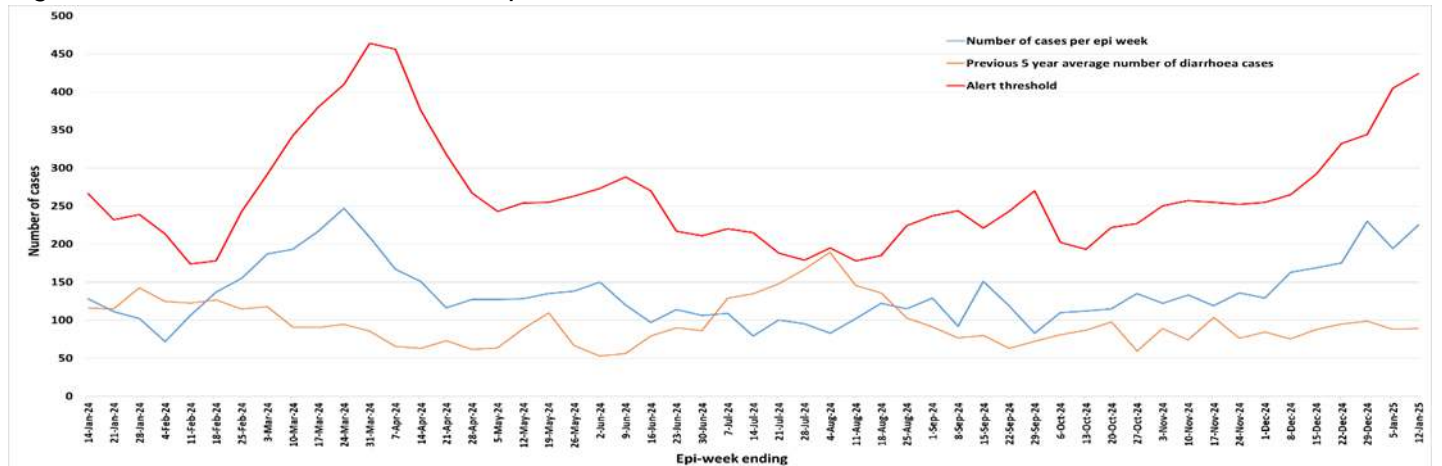
3. **Diarrhea**

Case Definition: Three (3) or more loose or watery or bloody stools in 24hrs

Alert threshold: **more than twice the average of the last two weeks count**

Epi-weeks	Epi-week 01: 30/12/24 – 05/01/25	Epi-week 02: 06/01/25 – 12/01/25
Total cases reported	194	225
Moving Average	202.5	212
Threshold	405	424

Figure 3. Number of Diarrhea cases reported from all health facilities



Diarrhea case count remains below the alert threshold. However, precautionary measures are strongly recommended as we are currently in the rainy season. The Ministry of Health strongly urges the public to continue good hand hygiene or hand washing practices, boil water before drinking and ensure food preparation is safe and sanitary.

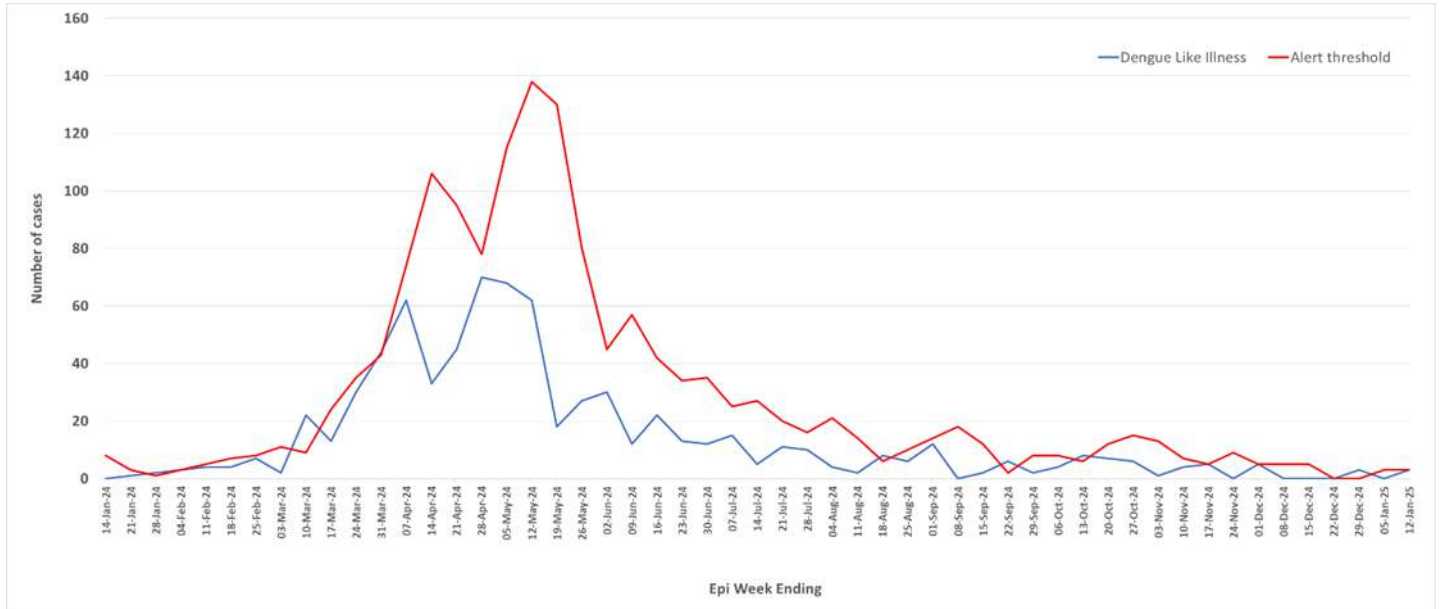


Case Definition: Fever ($\geq 38^{\circ}\text{C}$) for at least 2 days, PLUS at least 2 of the following: Nausea or vomiting; Muscle or joint pain; Severe headache or pain behind the eyes; Rash; bleeding

Alert threshold: **twice the average number of cases seen in the previous two weeks**

Epi-weeks	Epi-week 01: 30/12/24 – 05/01/25	Epi-week 02: 06/01/25 – 12/01/25
Total cases reported	0	3
Moving Average	1.5	1.5
Threshold	3	3

Figure 4. Number of DLI cases reported from all health facilities



The case count of dengue like illness has not exceeded the alert threshold. The Ministry of Health strongly advises the public to maintain preventative practices, including eliminating stagnant water sources around homes that could serve as mosquito breeding sites, wearing appropriate clothing to reduce mosquito bites, and using mosquito nets and repellents such as lotions and sprays. If you experience symptoms, be vigilant for severe manifestations and seek medical attention promptly. Additionally, monitor other household members for similar symptoms and seek testing and medical advice at a hospital if needed.

