



## Syndromic Surveillance Report

Epi-week 4: 20/01/25 – 26/01/25

Date of report: 27<sup>th</sup> January, 2025

Email: [surveillance@health.gov.ws](mailto:surveillance@health.gov.ws)

Prepared by: Health Security & Disease Surveillance Division

Tel: 66506/66507

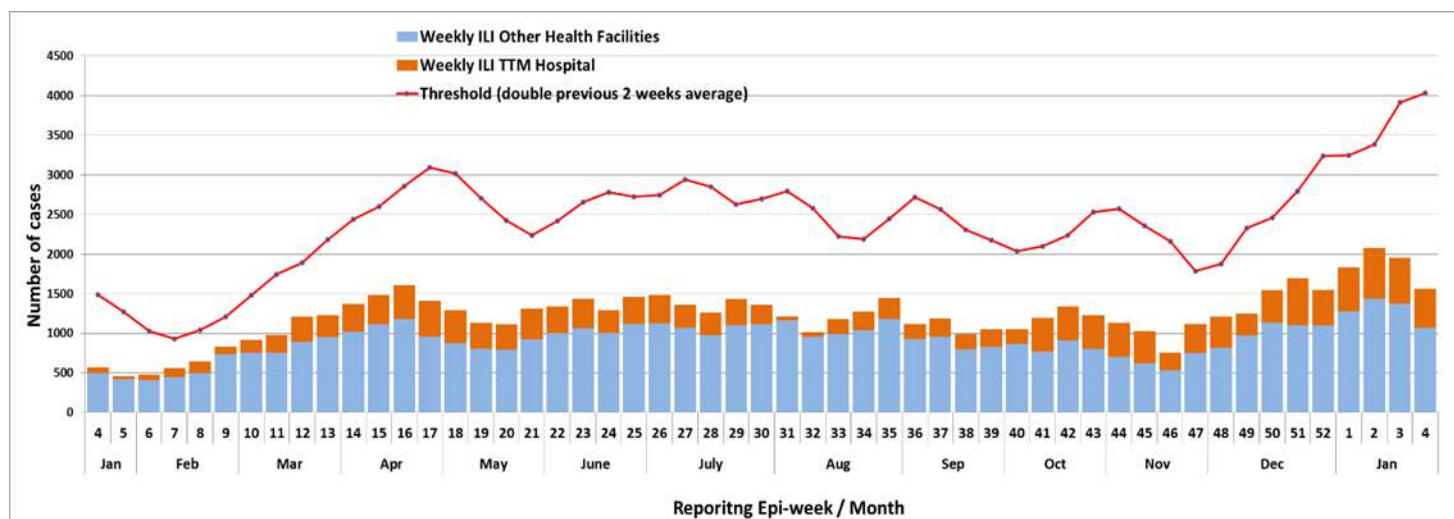
### 1. Influenza like illness (ILI)

**Case Definition:** An acute respiratory infection with a history of fever or measured fever of  $\geq 38\text{ C}^\circ$  and cough, with onset within the last 10 days

**Alert threshold:** Exceeding double the average in the previous 2 weeks

Epi-weeks	Epi-week 03: 13/01/25 – 19/01/25	Epi-week 04: 20/01/25 – 26/01/25
Total cases reported	1954	1565
Moving Average	1956	2017
Threshold	3912	4034

Figure 1. Number of ILI cases reported from all Health Facilities



The influenza like illness case count decreased by 20% compared to the previous epi-week; it remains below the alert threshold. The Ministry of Health strongly recommends the general public to continue the practice of preventative measures such as – wearing of face masks especially when you have flu-like symptoms such as cough and runny nose, practice regular hand hygiene and avoid large gatherings without masks. If you are feeling ill with flu-like symptoms, please see a nurse or doctor, stay home and take medications as prescribed.

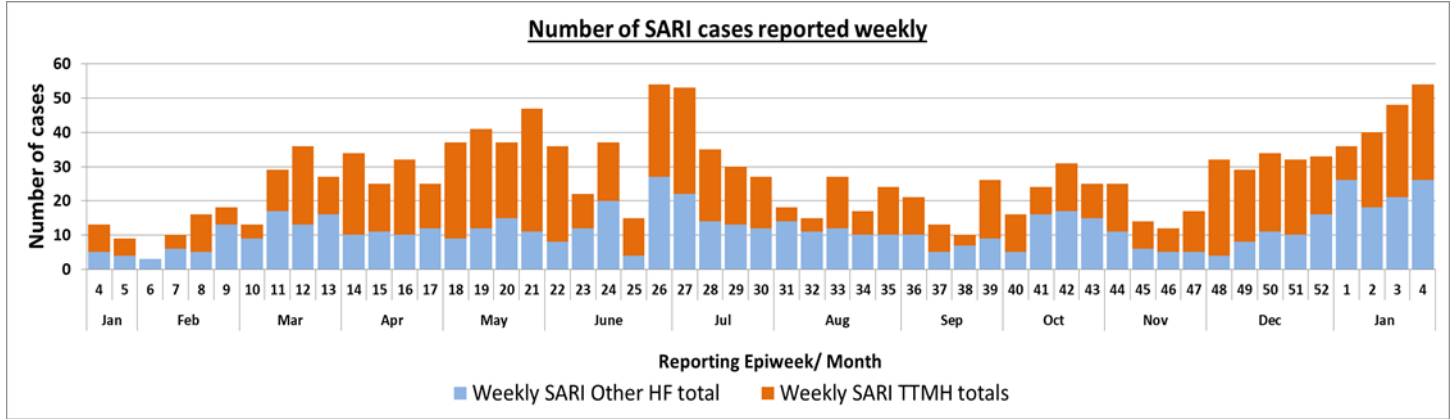


**Case Definition:** An acute respiratory infection with a history of fever or measured fever of  $\geq 38\text{ C}^\circ$  and cough, with onset within the last 10 days, AND requiring hospitalization

**Alert threshold:** 2 linked cases

Epi-weeks	Epi-week 03: 13/01/25 – 19/01/25	Epi-week 04: 20/01/25 – 26/01/25
Total cases reported	48	54
Moving Average	38	44
Threshold	2 linked cases	2 linked cases

Figure 2. Number of SARI cases reported from all health facilities



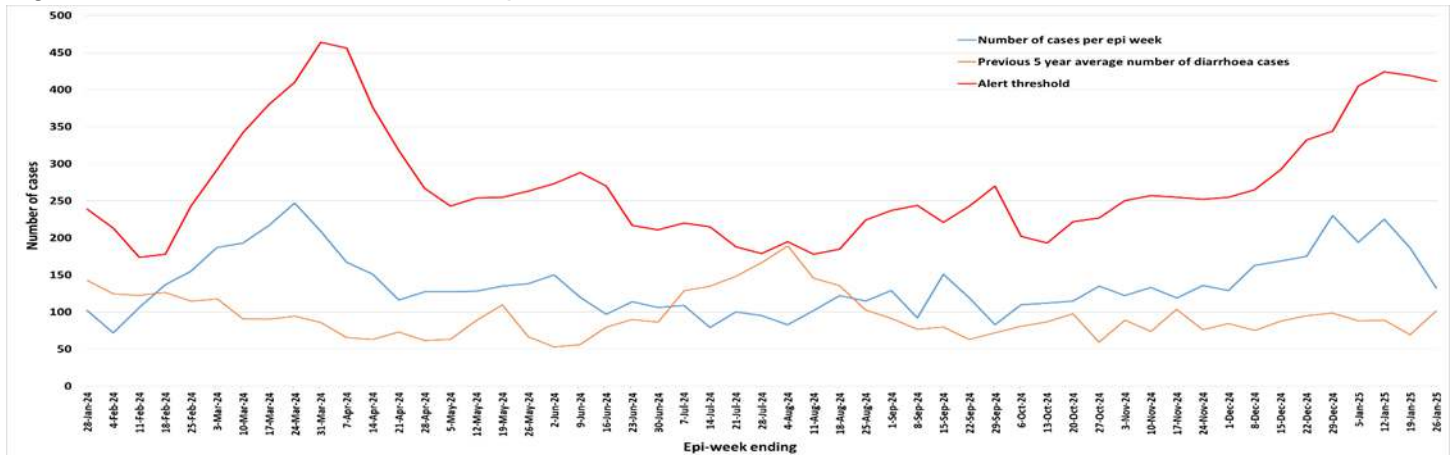
3. **Diarrhea**

**Case Definition:** Three (3) or more loose or watery or bloody stools in 24hrs

**Alert threshold:** more than twice the average of the last two weeks count

Epi-weeks	Epi-week 03: 13/01/25 – 19/01/25	Epi-week 04: 20/01/25 – 26/01/25
Total cases reported	186	132
Moving Average	209.5	205.5
Threshold	419	411

Figure 3. Number of Diarrhea cases reported from all health facilities



Diarrhea case count remains below the alert threshold. However, precautionary measures are strongly recommended as we are currently in the rainy season. The Ministry of Health strongly urges the public to continue good hand hygiene or hand washing practices, boil water before drinking and ensure food preparation is safe and sanitary.

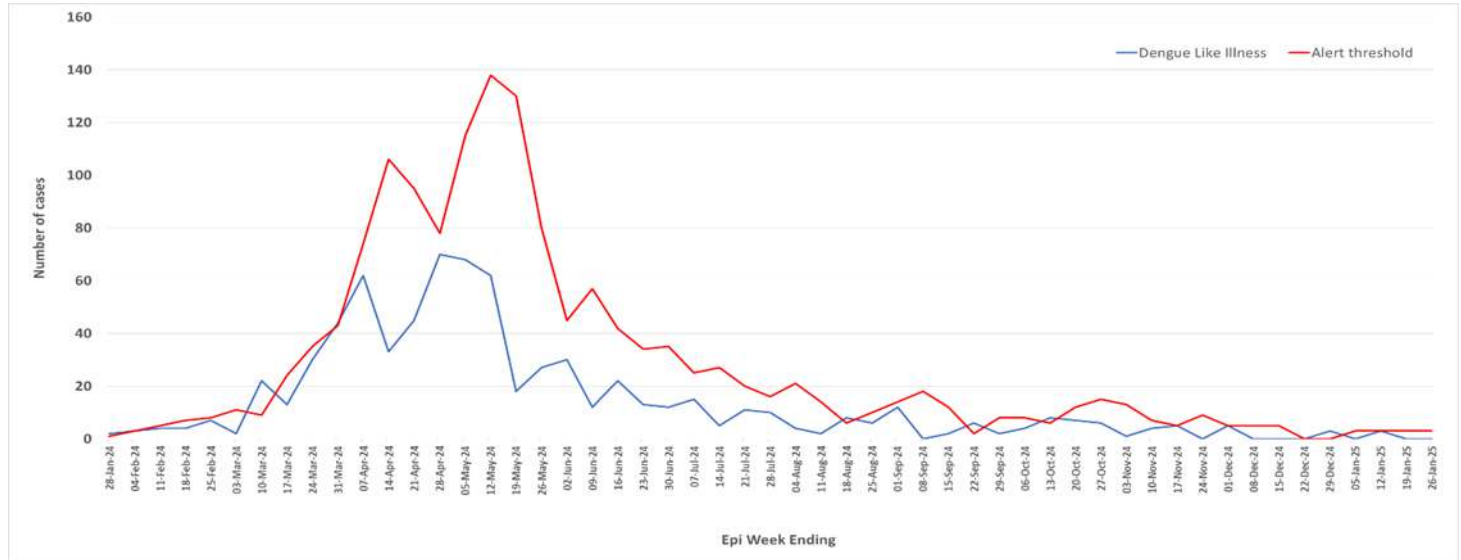


**Case Definition:** Fever ( $\geq 38^{\circ}\text{C}$ ) for at least 2 days, PLUS at least 2 of the following: Nausea or vomiting; Muscle or joint pain; Severe headache or pain behind the eyes; Rash; bleeding

**Alert threshold:** **twice the average number of cases seen in the previous two weeks**

Epi-weeks	Epi-week 03: 13/01/25 – 19/01/25	Epi-week 04: 20/01/25 – 26/01/25
<b>Total cases reported</b>	0	0
<b>Moving Average</b>	1.5	1.5
<b>Threshold</b>	3	3

Figure 4. Number of DLI cases reported from all health facilities



The case count of dengue like illness remains below the alert threshold. The Ministry of Health strongly advises the public to maintain preventative practices, including eliminating stagnant water sources around homes that could serve as mosquito breeding sites, wearing appropriate clothing to reduce mosquito bites, and using mosquito nets and repellents such as lotions and sprays. If you experience symptoms, be vigilant for severe manifestations and seek medical attention promptly. Additionally, monitor other household members for similar symptoms and seek testing and medical advice at a hospital if needed.

