



Syndromic Surveillance Report

Epi-week 7: 10/02/25 – 16/02/25

Date of report: 17th February, 2025
Email: surveillance@health.gov.ws

Prepared by: Health Security & Disease Surveillance Division
Tel: 66506/66507

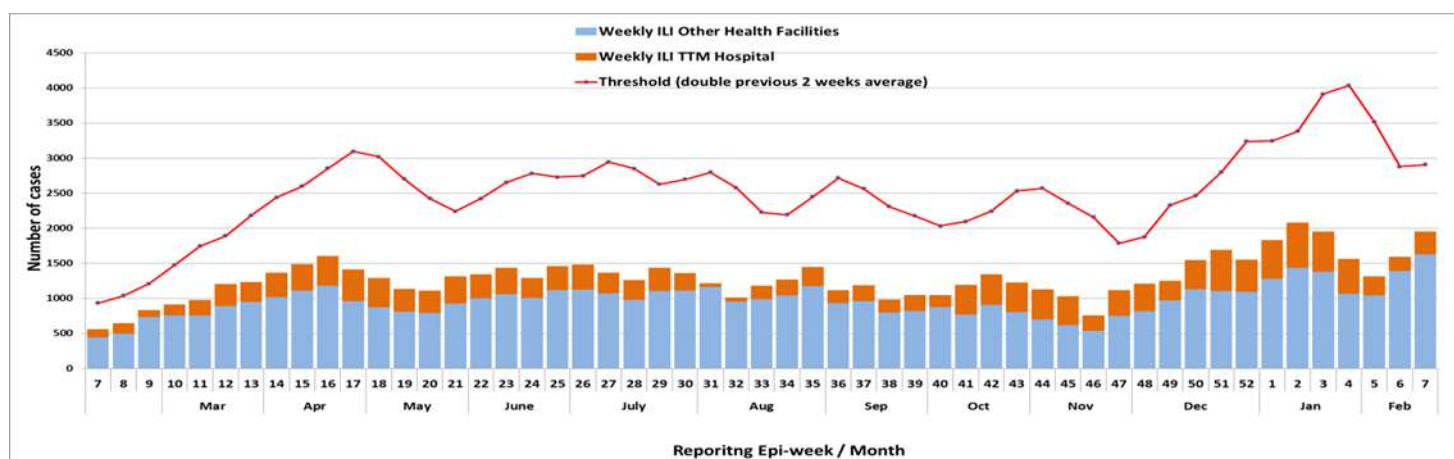
1. Influenza like illness (ILI)

Case Definition: An acute respiratory infection with a history of fever or measured fever of $\geq 38\text{ C}^\circ$ and cough, with onset within the last 10 days

Alert threshold: Exceeding double the average in the previous 2 weeks

Epi-weeks	Epi-week 06: 03/02/25 – 09/02/25	Epi-week 07: 10/02/25 – 16/02/25
Total cases reported	1593	1953
Moving Average	1440	1454
Threshold	2879	2907

Figure 1. Number of ILI cases reported from all Health Facilities



The influenza like illness case count increased by 23% compared to the previous epi-week but it still remains below the alert threshold. The Ministry of Health strongly recommends the general public to continue the practice of preventative measures such as – wearing of face masks especially when you have flu-like symptoms such as cough and runny nose, practice regular hand hygiene and avoid large gatherings without masks. If you are feeling ill with flu-like symptoms, please see a nurse or doctor, stay home and take medications as prescribed.

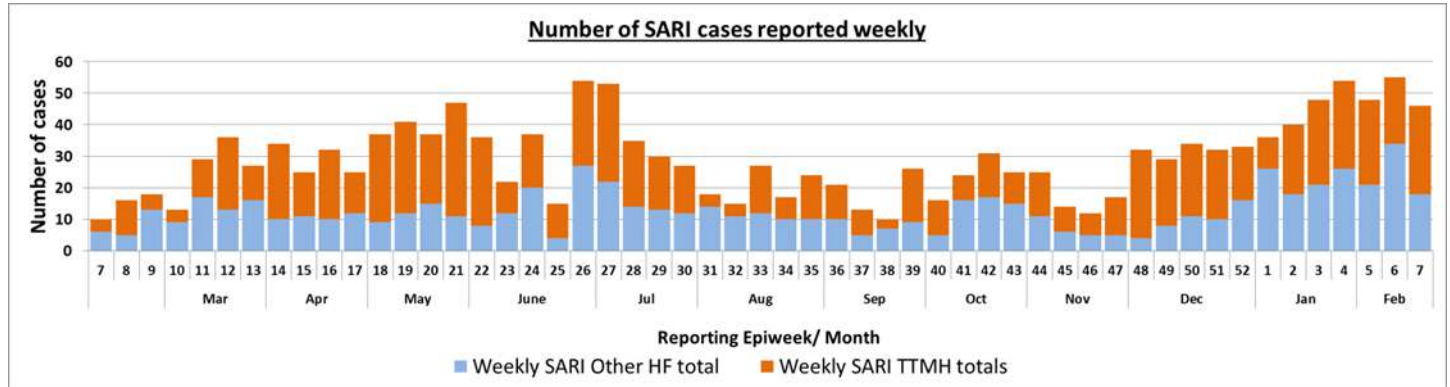


Case Definition: An acute respiratory infection with a history of fever or measured fever of $\geq 38\text{ C}^\circ$ and cough, with onset within the last 10 days, AND requiring hospitalization

Alert threshold: 2 linked cases

Epi-weeks	Epi-week 06: 03/02/25 – 09/02/25	Epi-week 07: 10/02/25 – 16/02/25
Total cases reported	55	46
Moving Average	51	51.5
Threshold	2 linked cases	2 linked cases

Figure 2. Number of SARI cases reported from all health facilities



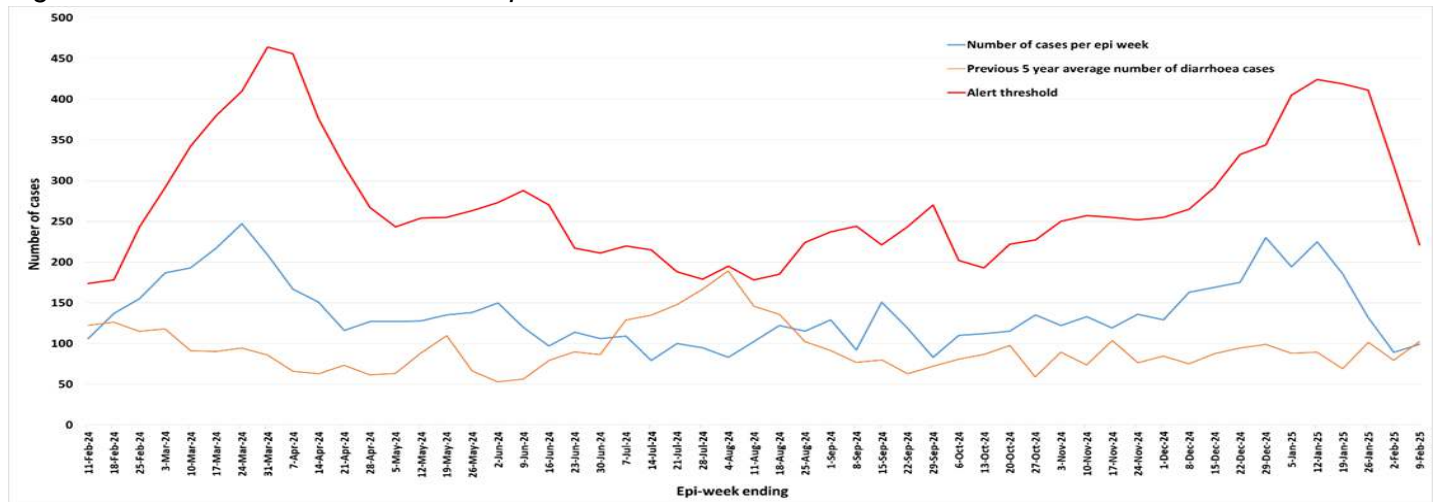
3. **Diarrhea**

Case Definition: Three (3) or more loose or watery or bloody stools in 24hrs

Alert threshold: more than twice the average of the last two weeks count

Epi-weeks	Epi-week 06: 03/02/25 – 09/02/25	Epi-week 07: 10/02/25 – 16/02/25
Total cases reported	115	130
Moving Average	112.5	103
Threshold	225	206

Figure 3. Number of Diarrhea cases reported from all health facilities



Diarrhea case count remains below the alert threshold. However, precautionary measures are strongly recommended as we are currently in the wet season. The Ministry of Health strongly urges the public to continue good hand hygiene or hand washing practices, boil water before drinking and ensure food preparation is safe and sanitary.

